

County Mammal Report 2016

For Dumfriesshire, Kirkcudbrightshire and Wigtownshire

A report by Andy Riches, Mammal Society County Mammal Recorder for the Dumfries & Galloway Region

©Andy Riches slioch69@aol.com

This is the seventh annual mammal report for the region in the Twenty First century. The success of a document like this is entirely dependent on the quality and quantity of the records received and I am extremely grateful to all those who have contributed and continue to do so.

The change in format that began last year is continued in this report. This document comprises a single page on each recorded species with a large map of distribution for the current year and two smaller maps. One of the smaller maps shows the 2010 distribution, which acts as a baseline, and the other shows the previous year's records. The status section will record the present situation and there may be a brief note where relevant.

A second document, the Dumfries & Galloway Mammal Handbook, contains more specific information on each species with photographs and identification aids. This will be kept under review and updated as necessary. It does not contain maps or detailed distribution information.

Persons or organisations needing access to the full records for a species can apply by e-mailing the County Recorder dgmammals@aol.com.

The increase in the number of records received has continued in 2015 and I would like to thank the individuals and organisations listed below who have provided records or helped in other ways with the production of this report.

Borders Forest Trust	Gwynneth Frame	N.S.A. Ranger's Volunteers
Chris Baines	Ross Gemmell	National Trust for Scotland
Cat Barlow	Malcolm Ginns	Peter Newsome
Judith Bartlett	Ed Glenwright	Ken Pardoe
Judy Baxter	Alison Graham	Liz Pardoe
Lorraine Bell	Kirsty Griffiths	Richard Patchett
Hester Binge	Steve & Jeni Grover	Jim Rae
David Boncey	Les Harrison	Karen Ramoo
British Trust for Ornithology (Scotland)	Angela Haigh	Red Squirrels in South Scotland
Ian Brown	Valerie Harrison	Alan Reville
Martin Brown	Rhiannon Hatfield	Pete Robinson
Carifran Wildwood Group	David Hawker	Phil Roe
Cree Valley Community	Pam Hazlehurst	Police Scotland V Division
Woodland Trust	H.M. Coastguard	Malcolm Ross
Michael Curry	Brian Henderson	Royal Society for the Protection of Birds
D.G.E.R.C	Mark Hodgson	John Savory
Peter Dreghorn	Rob Jamieson	Isla Scott
Dumfries & Galloway	Pete Jeavons	S.E.P.A.
Constabulary	Isabelle Jeffrey	Scottish Fire and Rescue Service
Dumfries & Galloway Council Ranger Service	Stephanie Johnstone	S.N.H.
Michael Durham	Susan Jones	Scottish S.P.C.A.
Colin Everett	Helen Kelly	Freda Seddon
Derek Farr	Keith Kirk	Violet Sinclair
Lisa Ferguson	Jacqueline Little	Robin Sloan
Owen Figgis	Jane McCarthy	Allan Smith
Forestry Commission Scotland	Fiona Mackenzie	Nick Smith-Saville
Les Foster	Tony Marshall	Lindsay Talbot
	Barbara & Richard Mearns	
	George Moffatt	
	Karl Munday	

Stan Tanner
Rick Taylor
Paul Taylorson
Dave Thompson

Guy Thomson
Martin Tilstone
Brian Wallace
Hamish Waugh

Wildfowl and Wetland Trust
Anna White

Special thanks are due to Mark Pollitt of D.G.E.R.C.

All records of mammals, no matter how common you think they are, are very welcome and very important.

If you don't tell us the chances are that no one will.

You can submit records by e-mail to dgmammals@aol.com or by telephoning or texting to [07792-142446](tel:07792-142446). The information required is:

- 1) What you saw [species and whether it was dead or alive].
- 2) Where you saw it [A general description, name of farm, road etc is fine].
- 3) When you saw it [ideally day, month and year but month and year will do].
- 4) Your name [you will be included in the list of contributors at the start of the report unless you prefer not to be].

Explanation of Status:

Status relates to the situation since 2010.

Number of Records	Geographical Spread	Increase or Decline
Rare: 1-20 records in last 20 years	Very Localised: records from 5 hectads or less	Unknown: insufficient records to determine
Scarce: under 5 records per annum	Localised: records from 6-10 hectads	Declining:
Uncommon: 6-50 records per annum	Fairly Localised: records from 11-15 hectads	Possible Decline:
Fairly Common: 51-250 records per annum	Fairly Widespread: records from 16-39 hectads	Stable:
Common: 251-500 records per annum	Widespread: records from 40 hectads or more	Possible Increase:
Abundant: over 500 records per annum		Increase:

Key to Maps:

The main map for each species shows the records for 2016, and the small maps show the records for 2010 and 2015, to enable comparisons to be made.

Each square on the maps is a hectad which consists of one hundred squares of 1x1 kilometres.

Hectads where a species is present in 76-100 of 1x1km squares are marked in blue.

Hectads where a species is present in 51-75 of 1x1km squares are marked in green.

Hectads where a species is present in 26-50 of 1x1km squares are marked in yellow.

Hectads where a species is present in 1-25 of 1x1km squares are marked in red.

Hectads where a species has previously been reported but which have no records in the current year are marked in grey.

Hectads where a species has not been reported since 2000 are left unmarked.

Hedgehog *Erinaceus europaeus*

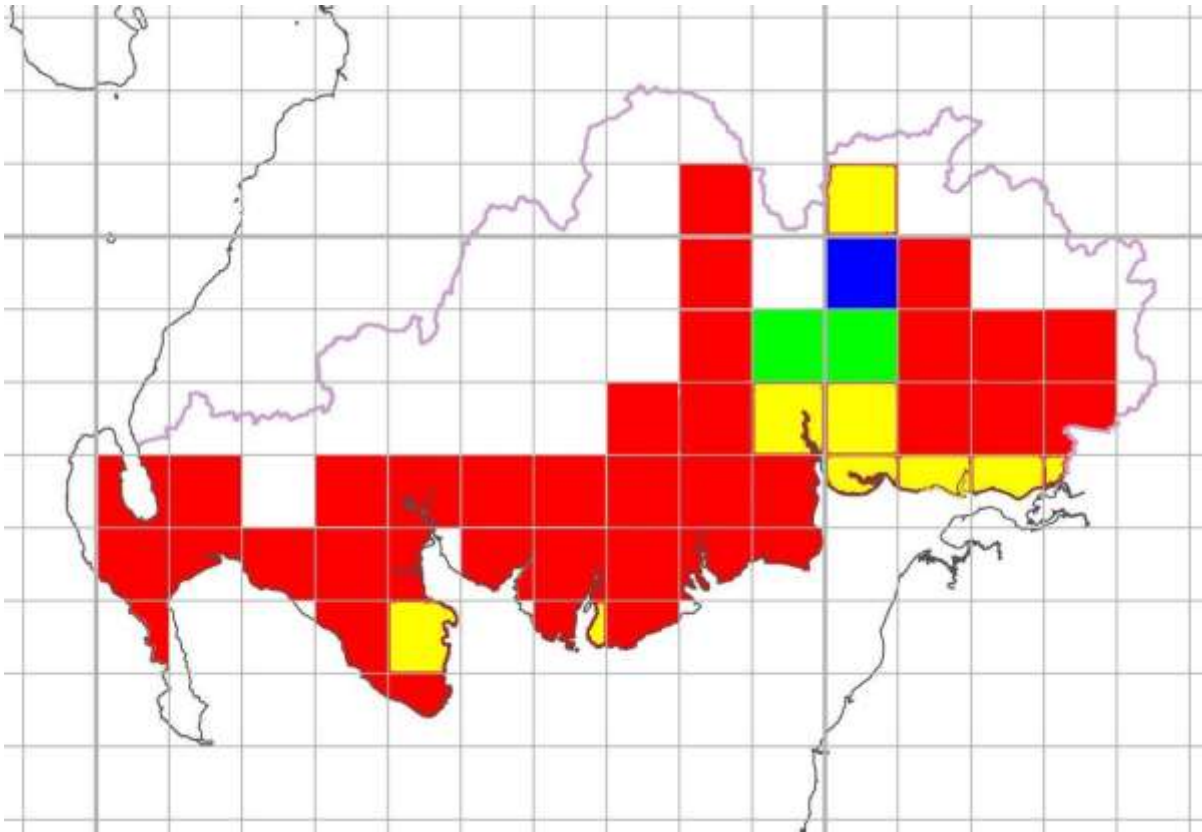


Figure 1 Hedgehog Records 2016

Status: Fairly Common/Fairly Widespread/Stable

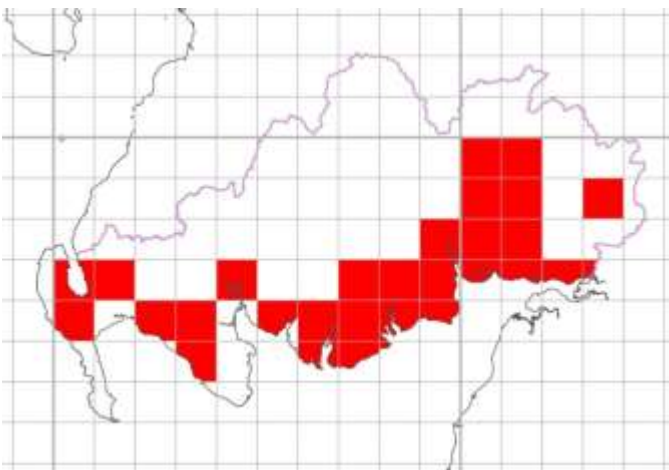


Figure 2 Hedgehog Records 2010

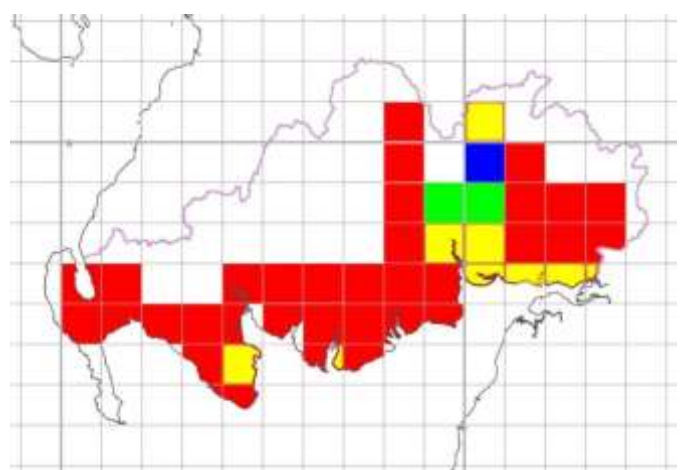


Figure 3 Hedgehog Records 2015

Mole *Talpa europea*

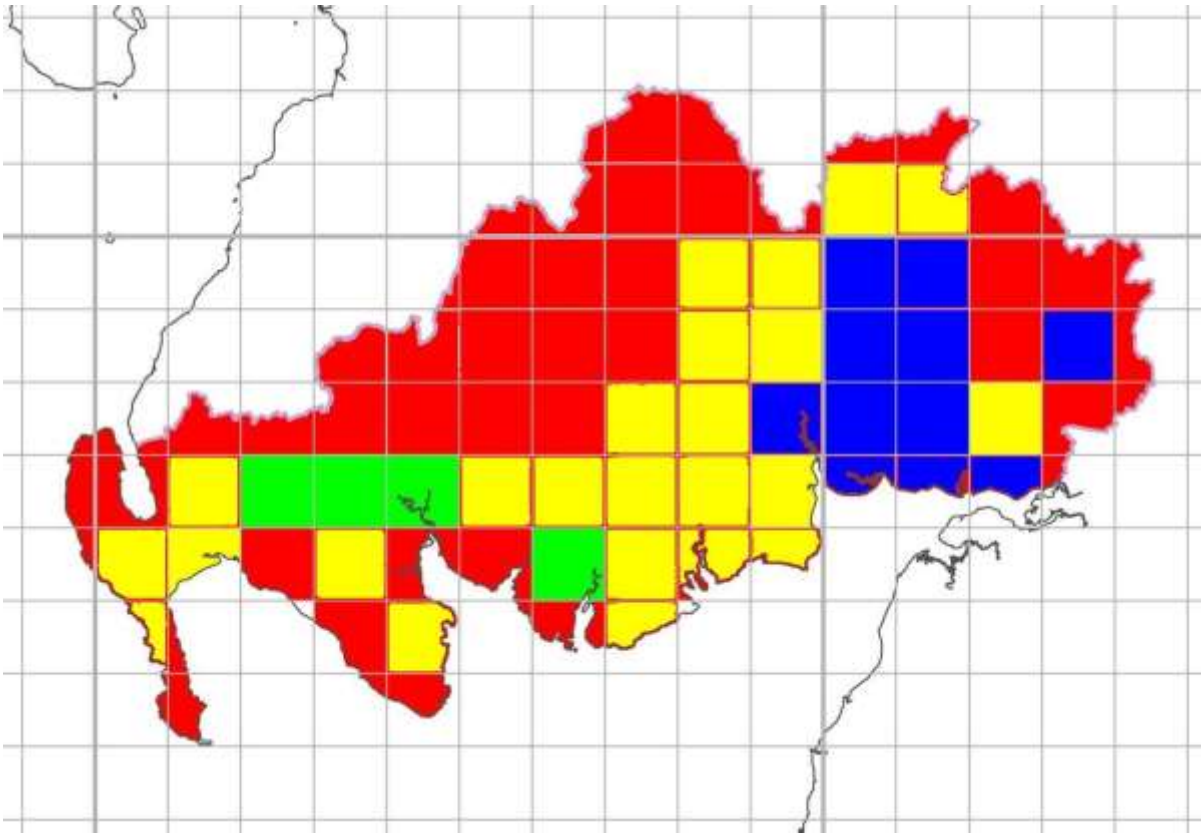


Figure 4 Mole Records 2016

Status: Common/Widespread/Stable

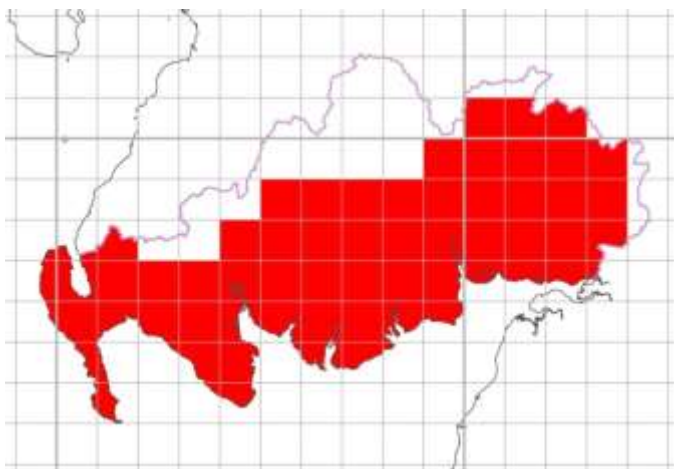


Figure 5 Mole Records 2010

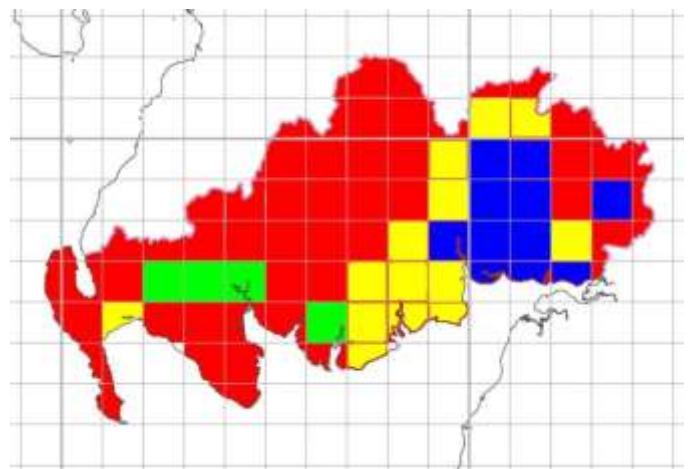


Figure 6 Mole Records 2015

Common Shrew *Sorex araneus*

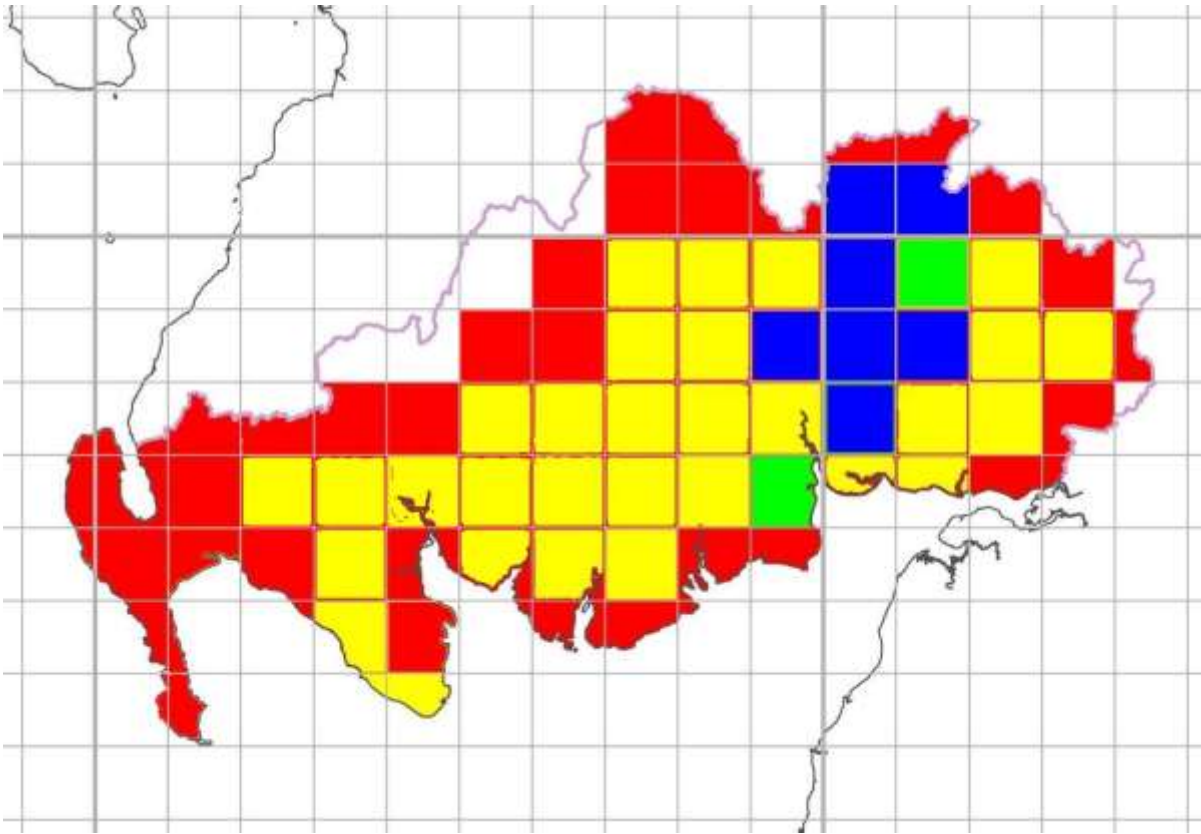


Figure 7 Common Shrew Records 2016

Status: Common/Widespread/Stable

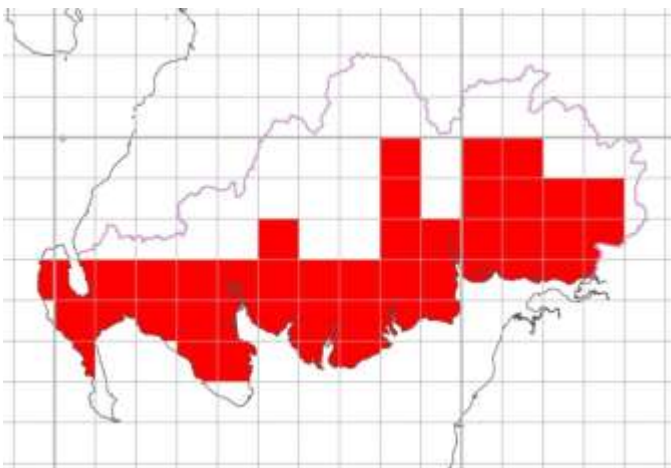


Figure 8 Common Shrew Records 2010

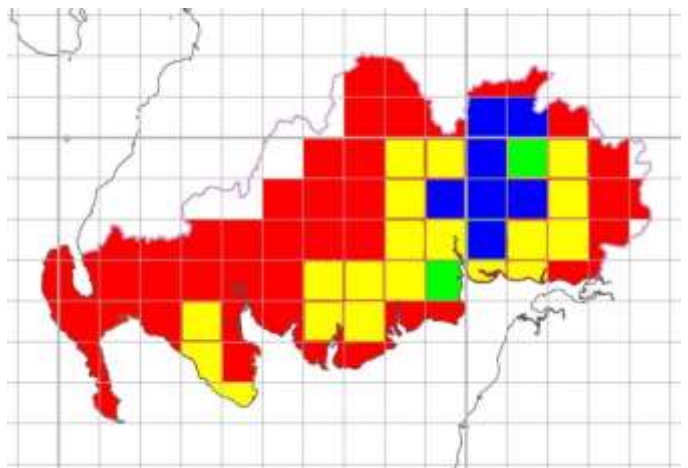


Figure 9 Common Shrew Records 2015

Pygmy Shrew *Sorex minutus*

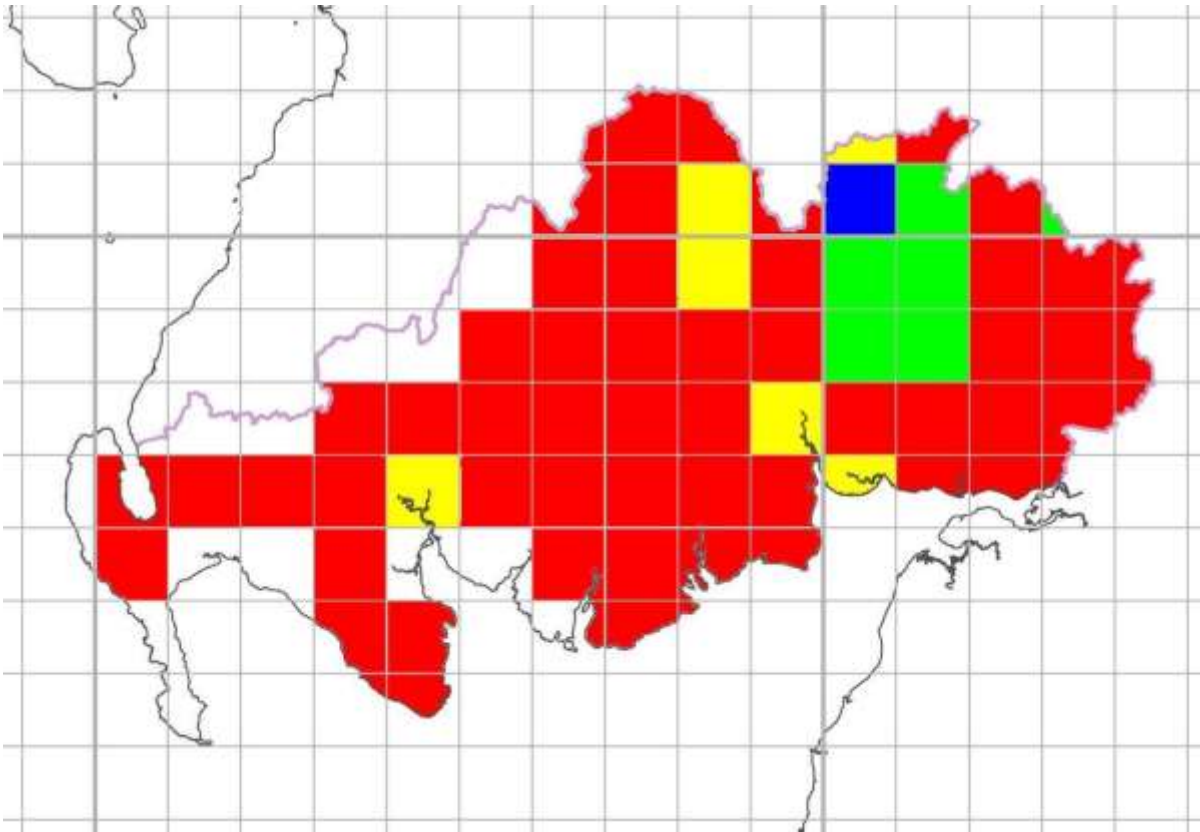


Figure 10 Pygmy Shrew Records 2016

Status: Fairly Common/Fairly Widespread/Stable

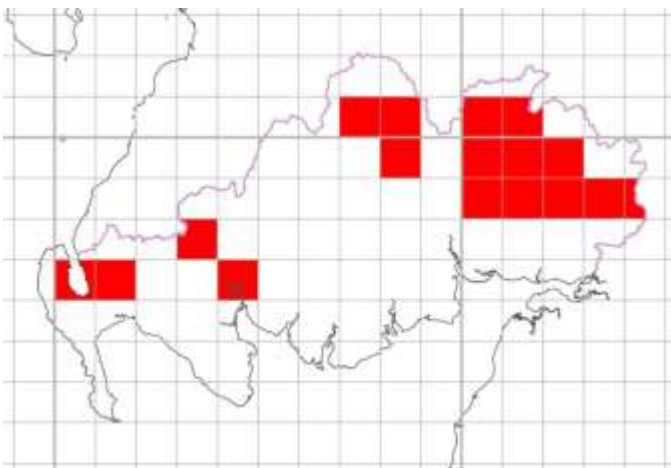


Figure 11 Pygmy Shrew Records 2010

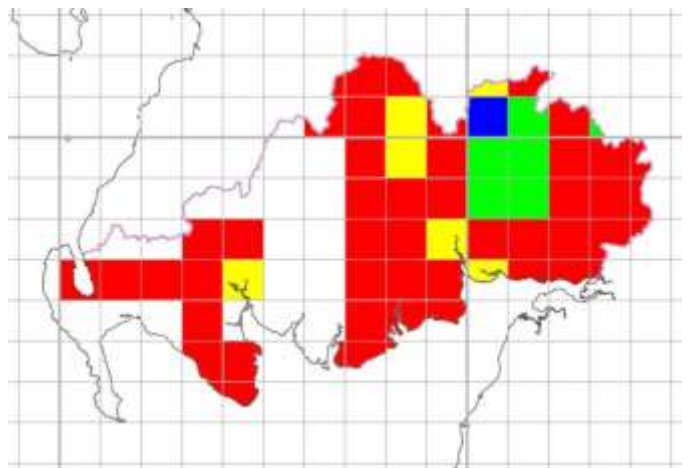


Figure 12 Pygmy Shrew Records 2015

Common Pipistrelle *Pipistrellus pipistrellus*

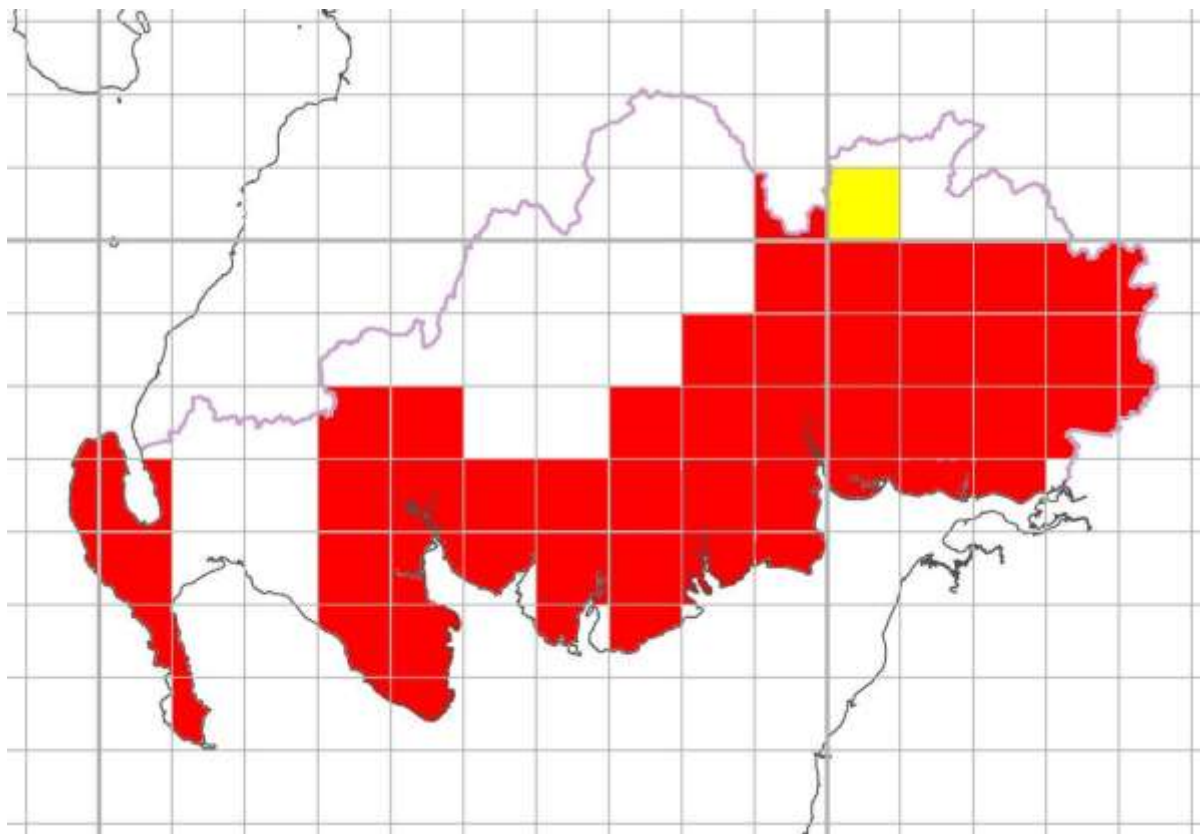


Figure 16 Common Pipistrelle Records 2016

Status: Fairly Common/Localised/Unknown

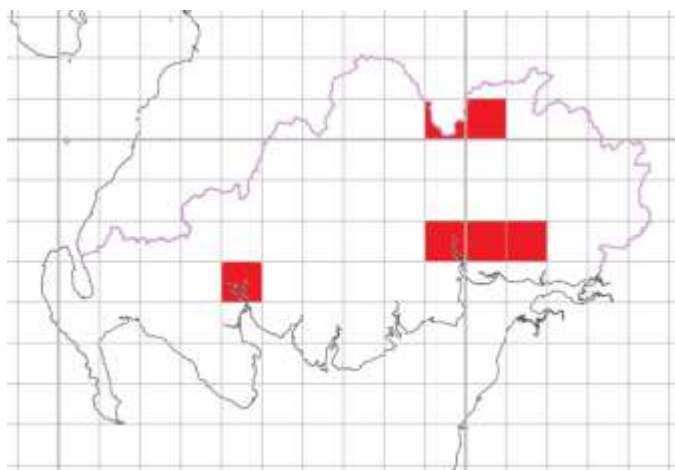


Figure 17 Common Pipistrelle 2010

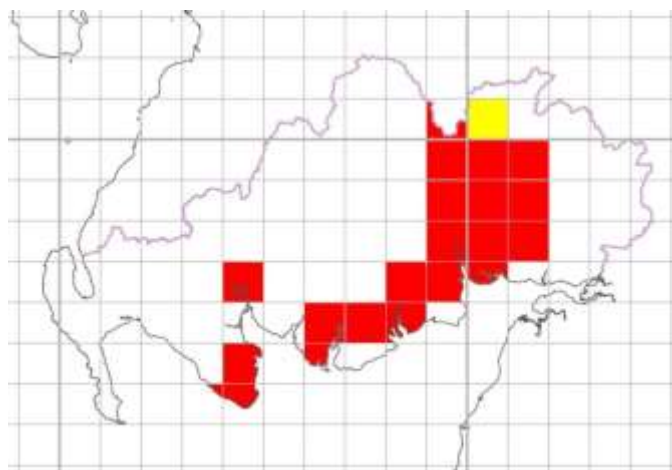


Figure 18 Common Pipistrelle 2015

Soprano Pipistrelle *Pipistrellus pygmaeus*

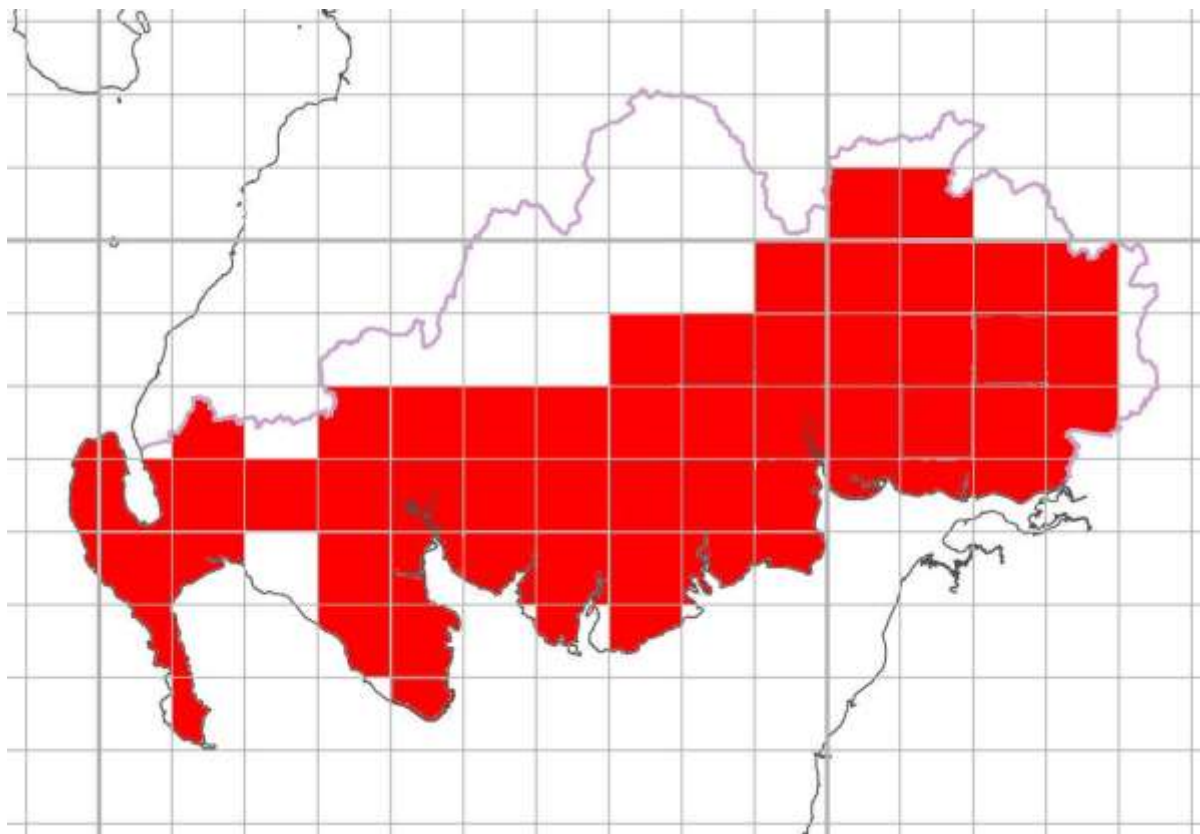


Figure 19 Soprano Pipistrelle 2016

Status: Uncommon/Localised/Unknown

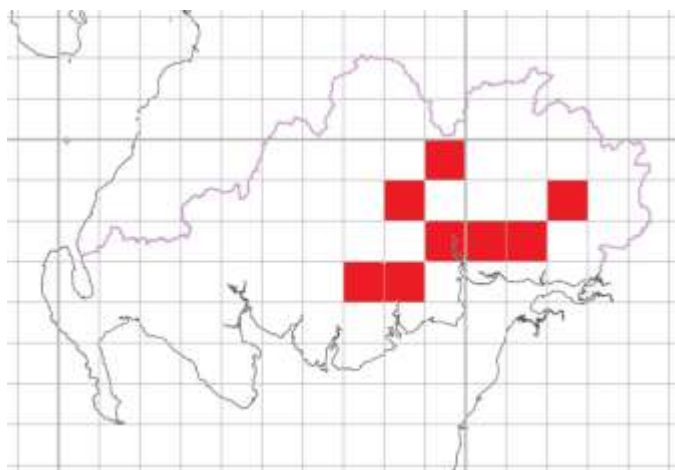


Figure 20 Soprano Pipistrelle 2010

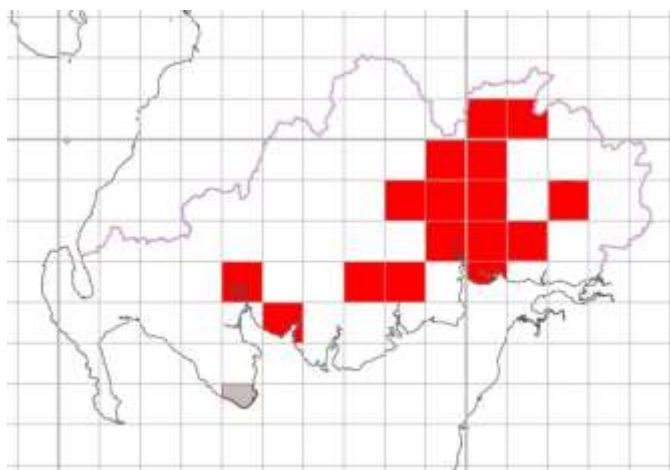


Figure 21 Soprano Pipistrelle 2015

Brown long-eared Bat *Plecotus auritus*

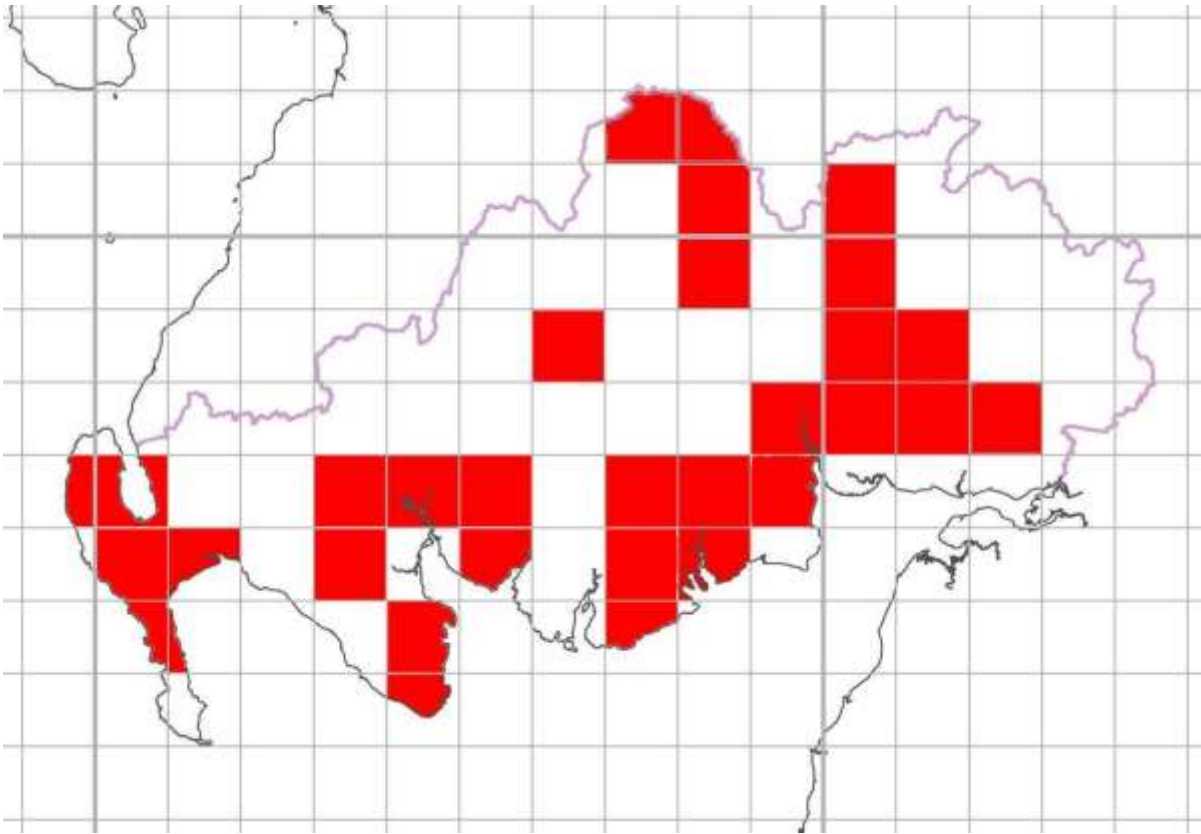


Figure 22 Brown long-eared Bat 2016

Status: Uncommon/Fairly Localised/Unknown

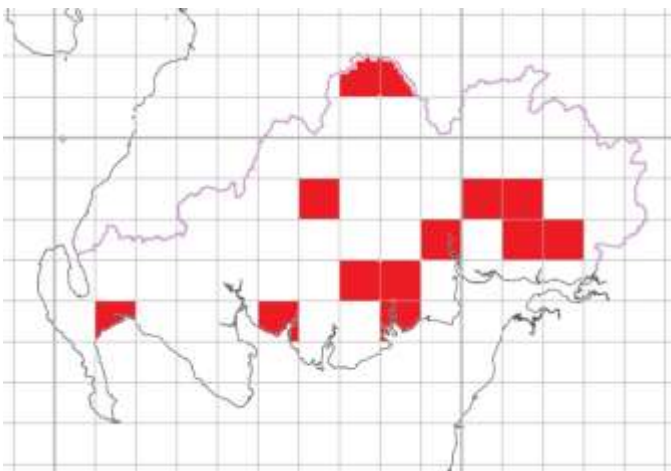


Figure 23 Brown long-eared Bat 2010

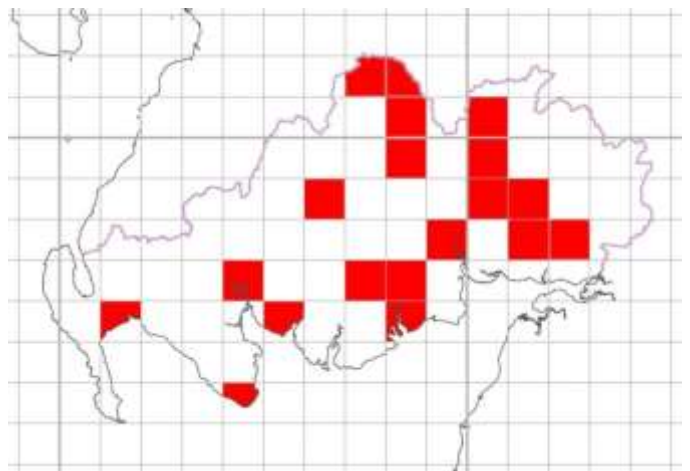


Figure 24 Brown long-eared Bat 2015

Noctule *Nyctalus noctula*

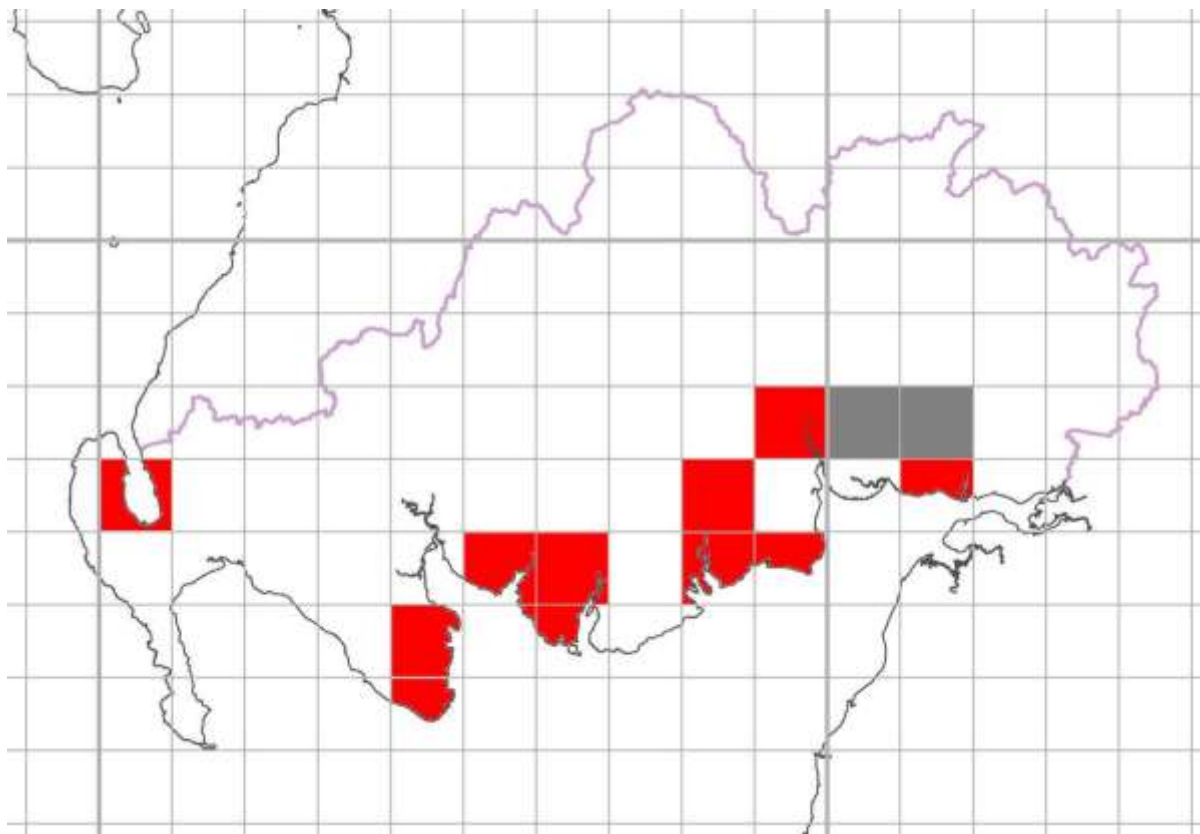


Figure 25 Noctule Records 2016

Status: Uncommon/Very Localised/Unknown

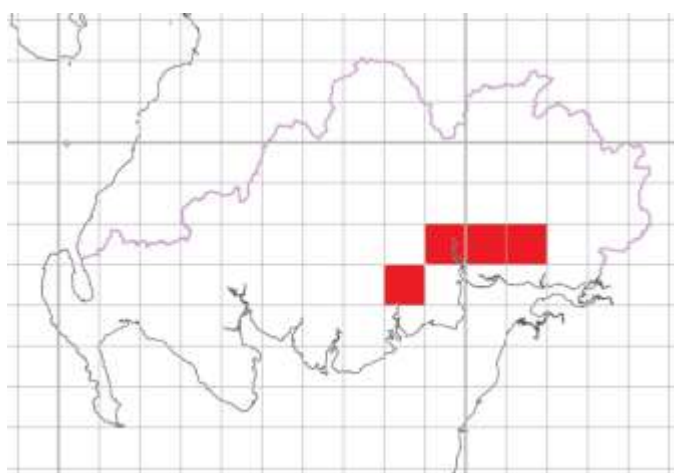


Figure 26 Noctule Records 2010

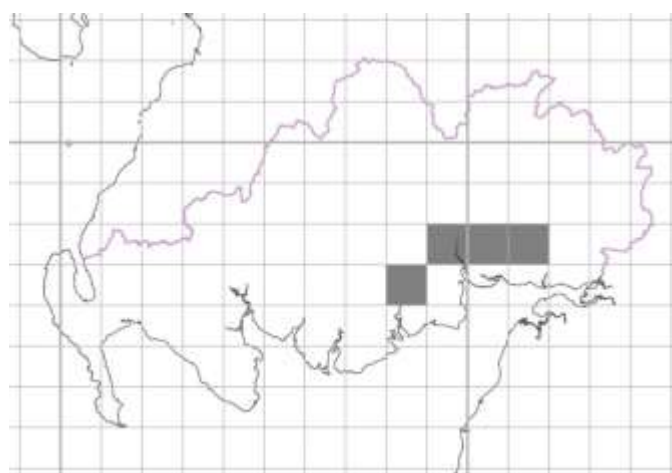


Figure 27 Noctule Records 2015

Natterer's Bat *Myotis natterii*

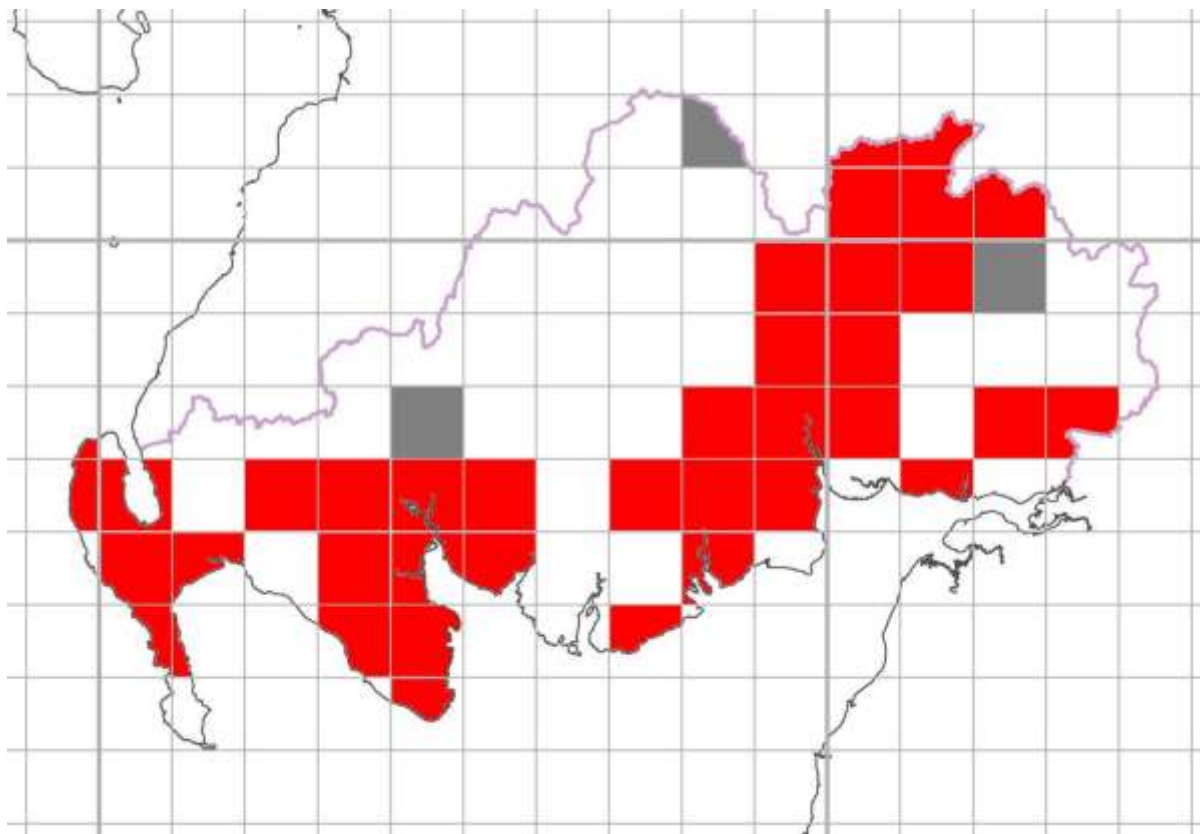


Figure 28 Natterer's Bat Records 2016

Status: Uncommon/Very Localised/Unknown

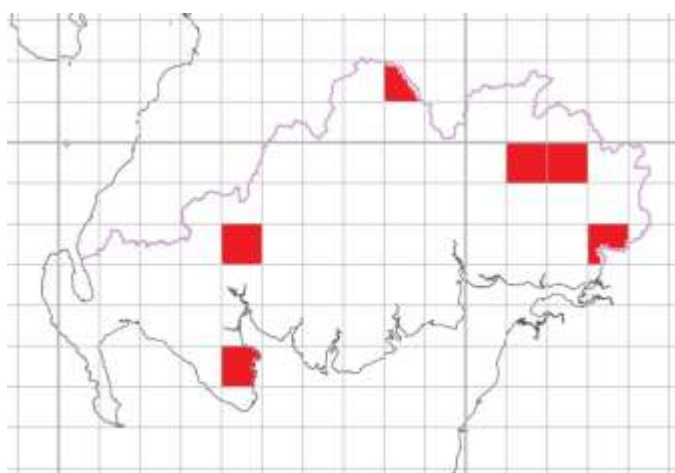


Figure 29 Natterer's Bat Records 2010

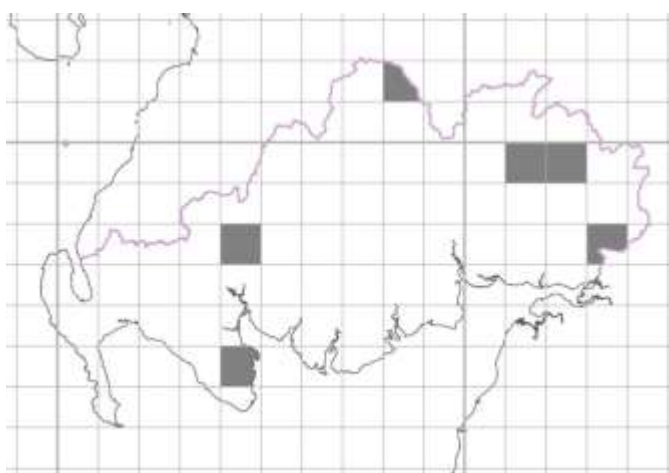


Figure 30 Natterer's Bat Records 2015

Daubenton's Bat *Myotis daubentonii*

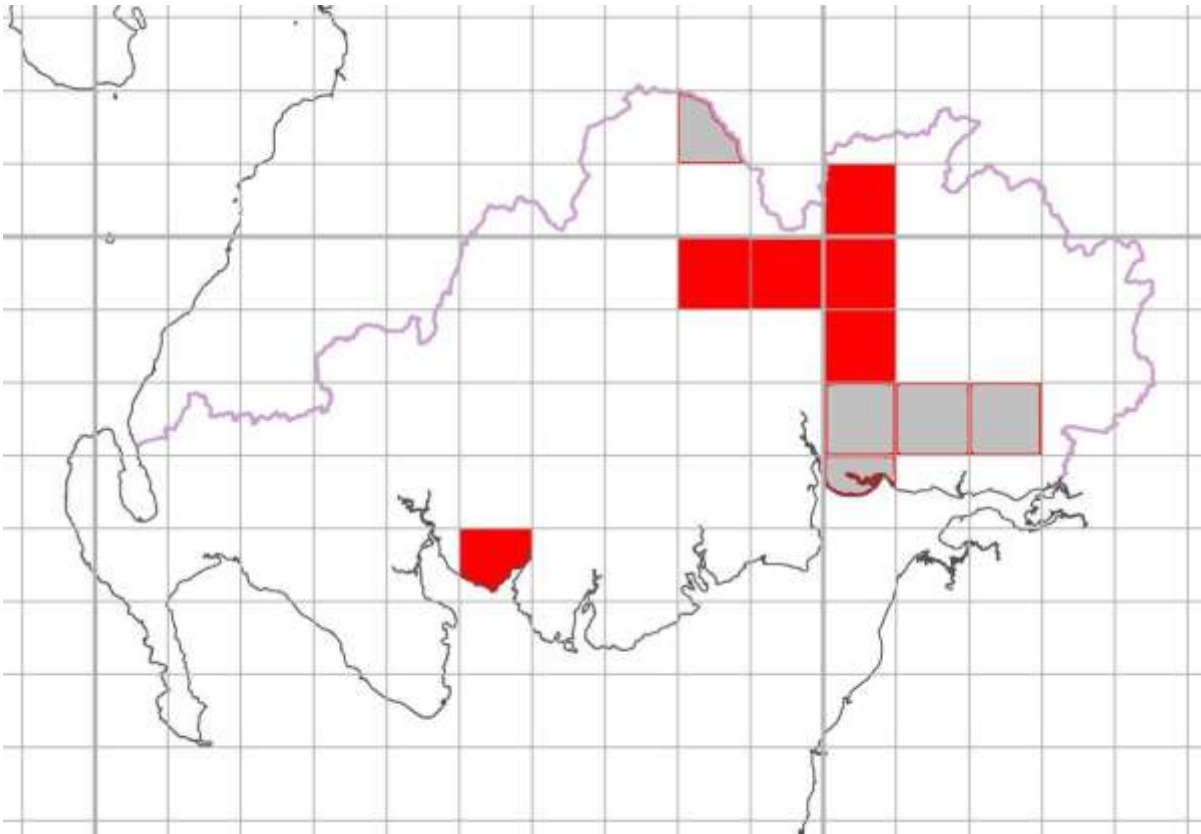


Figure 31 Daubenton's Bat Records 2016

Status: Uncommon/Localised/Unknown

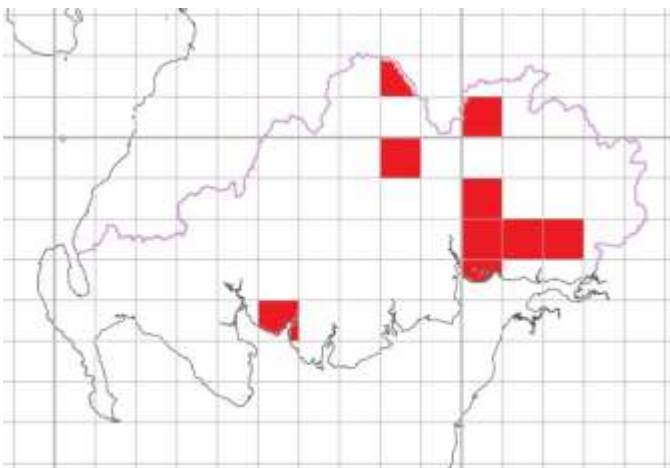


Figure 32 Daubenton's Bat Records 2010

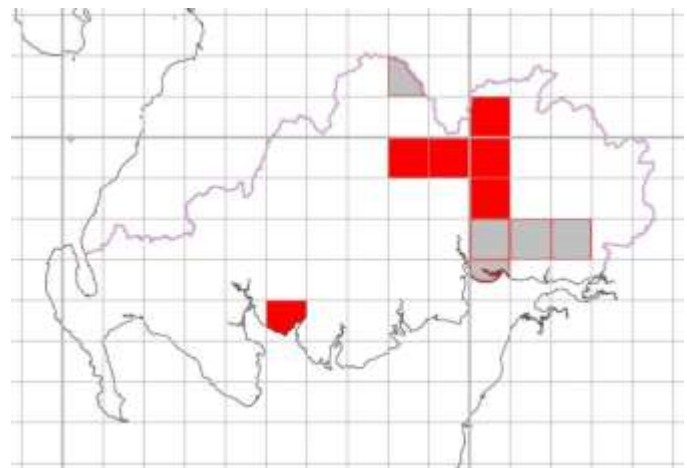


Figure 33 Daubenton's Bat Records 2015

Whiskered Bat *Myotis mystacinus*

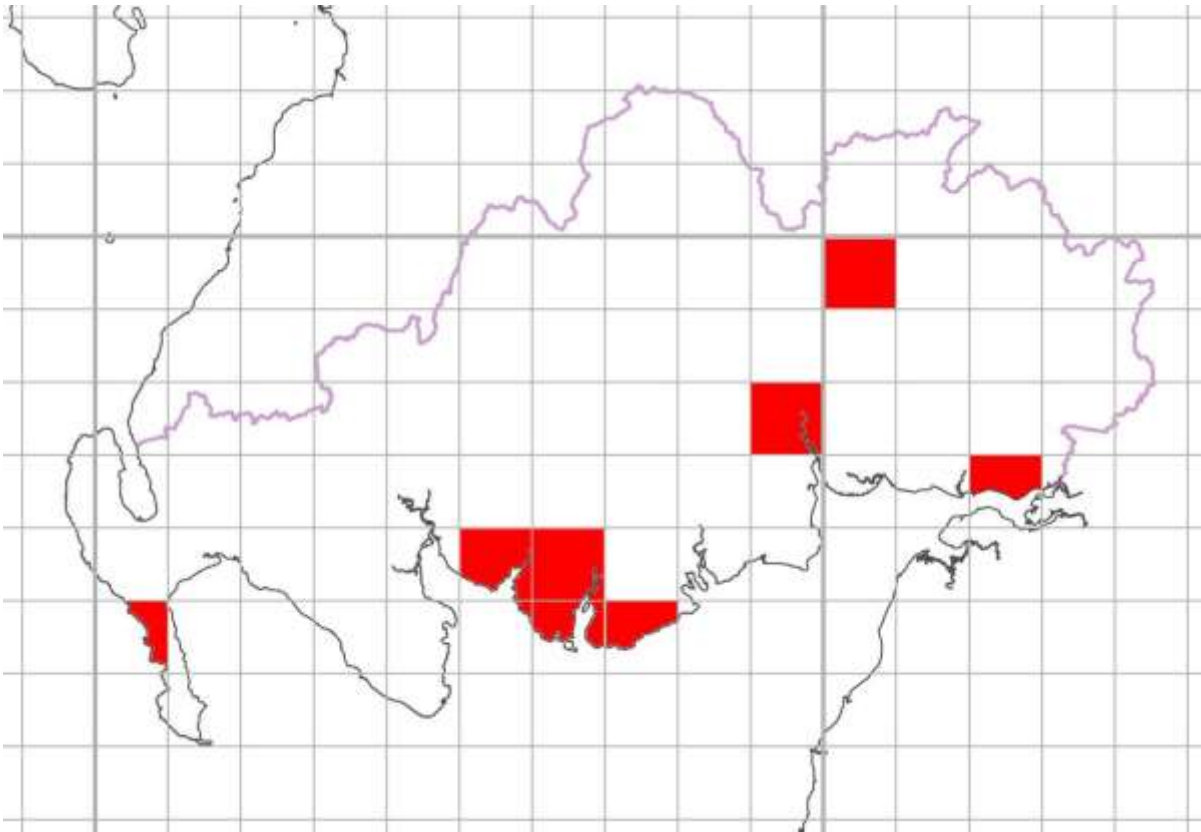


Figure 34 Whiskered Bat Records 2016

Status: Scarce/Very Localised/Unknown

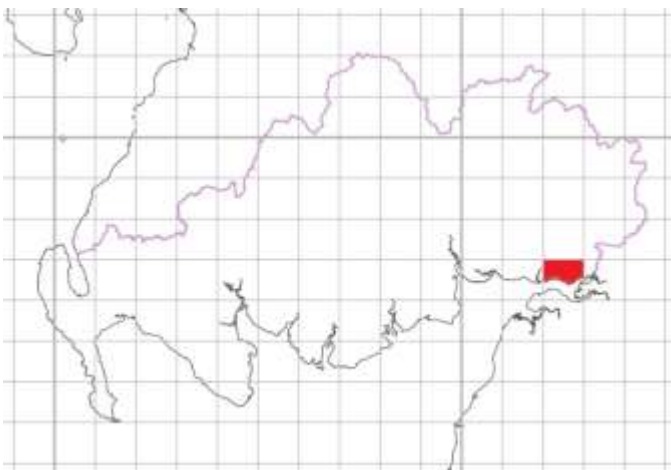


Figure 35 Whiskered Bat Records 2010

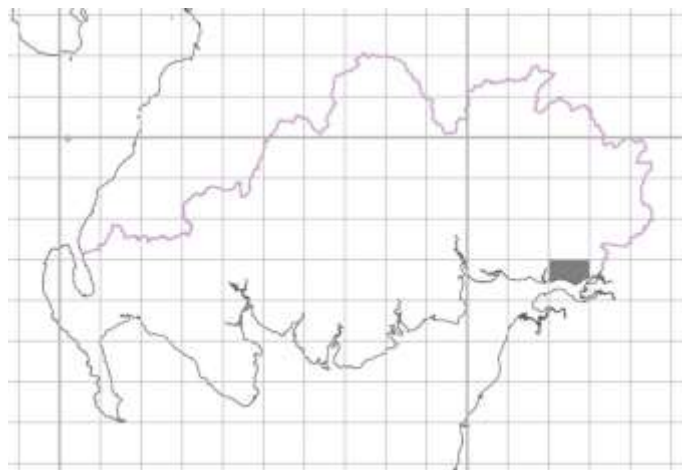


Figure 36 Whiskered Bat Records 2015

Red Squirrel *Sciurus vulgaris*

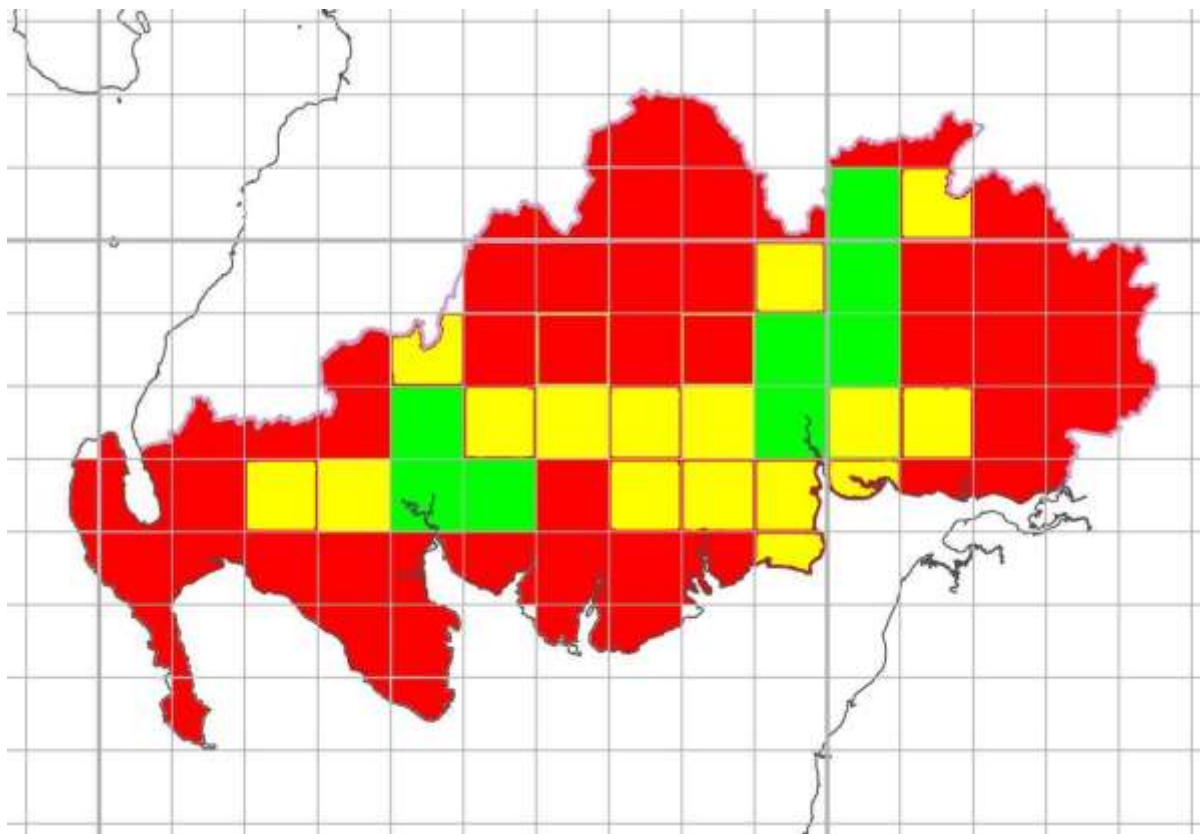


Figure 37 Red Squirrel Records 2016

Status: Common/Widespread/Stable/Seriously Endangered

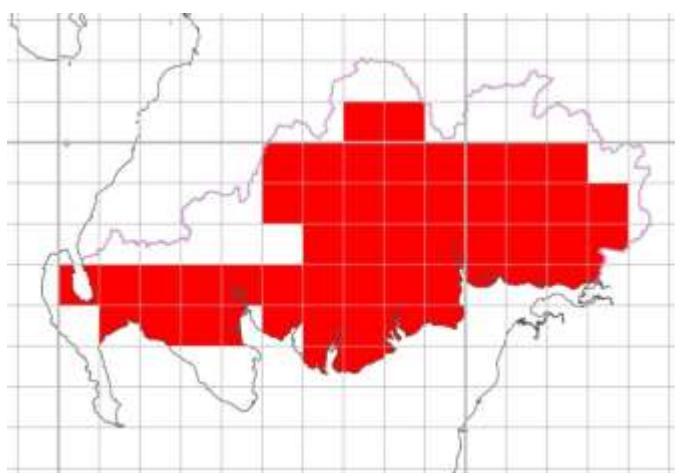


Figure 38 Red Squirrel Records 2010

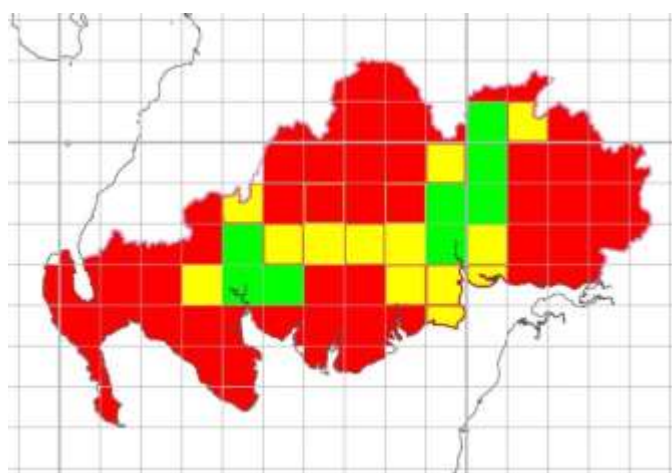


Figure 39 Red Squirrel Records 2015

Grey Squirrel *Sciurus carolinensis*

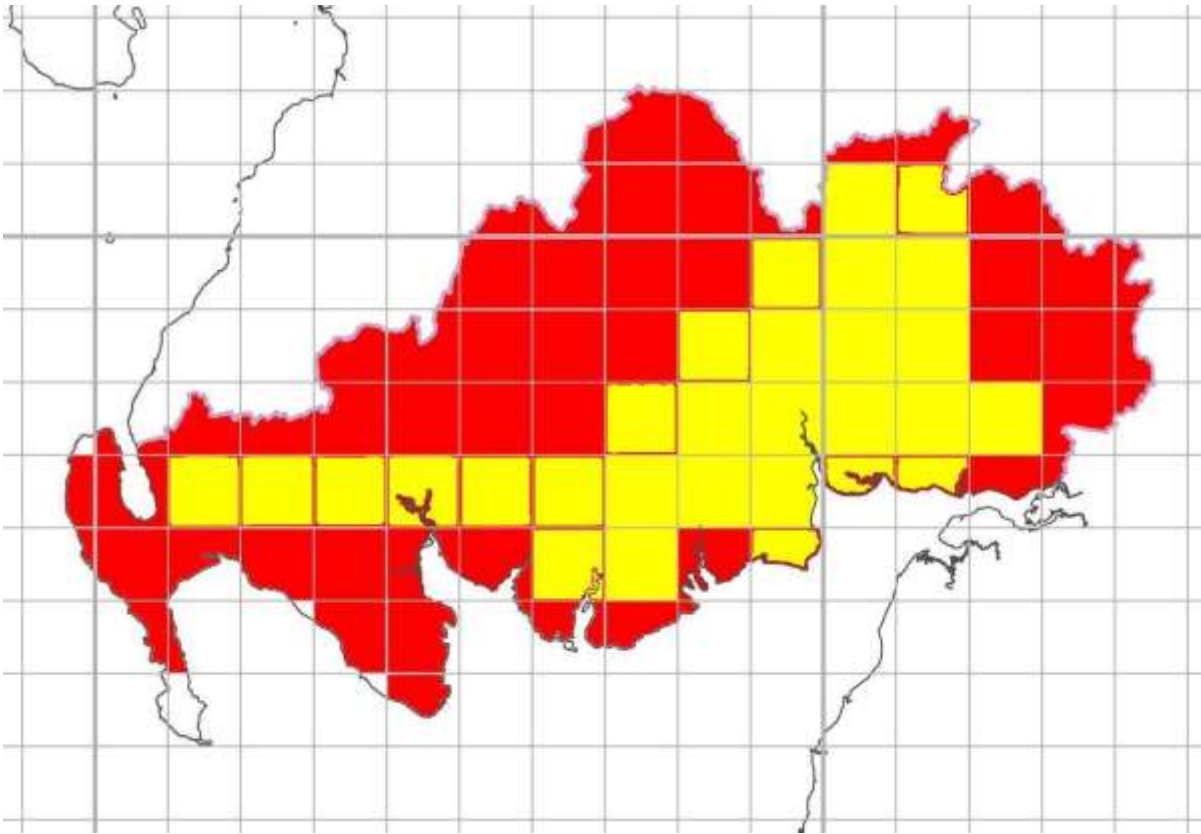


Figure 40 Grey Squirrel Records 2016

Status: Common/Widespread/Increasing/Invasive Pest****

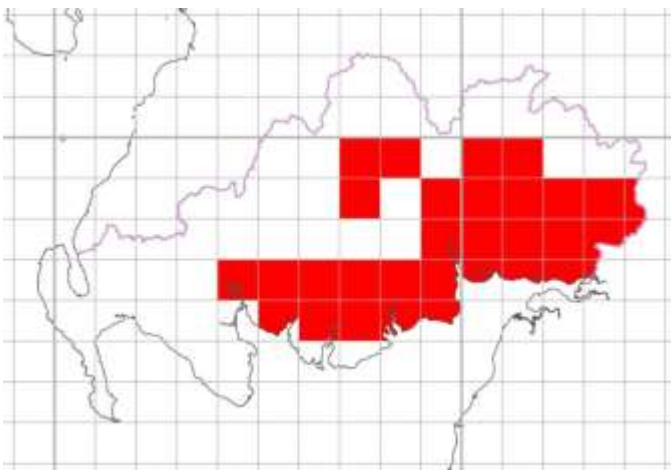


Figure 41 Grey Squirrel Records 2010

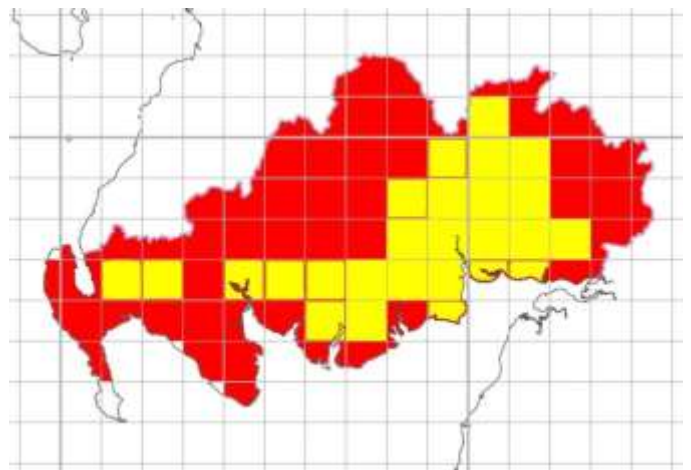


Figure 42 Grey Squirrel Records 2015

Bank Vole *Myodes glareolus*

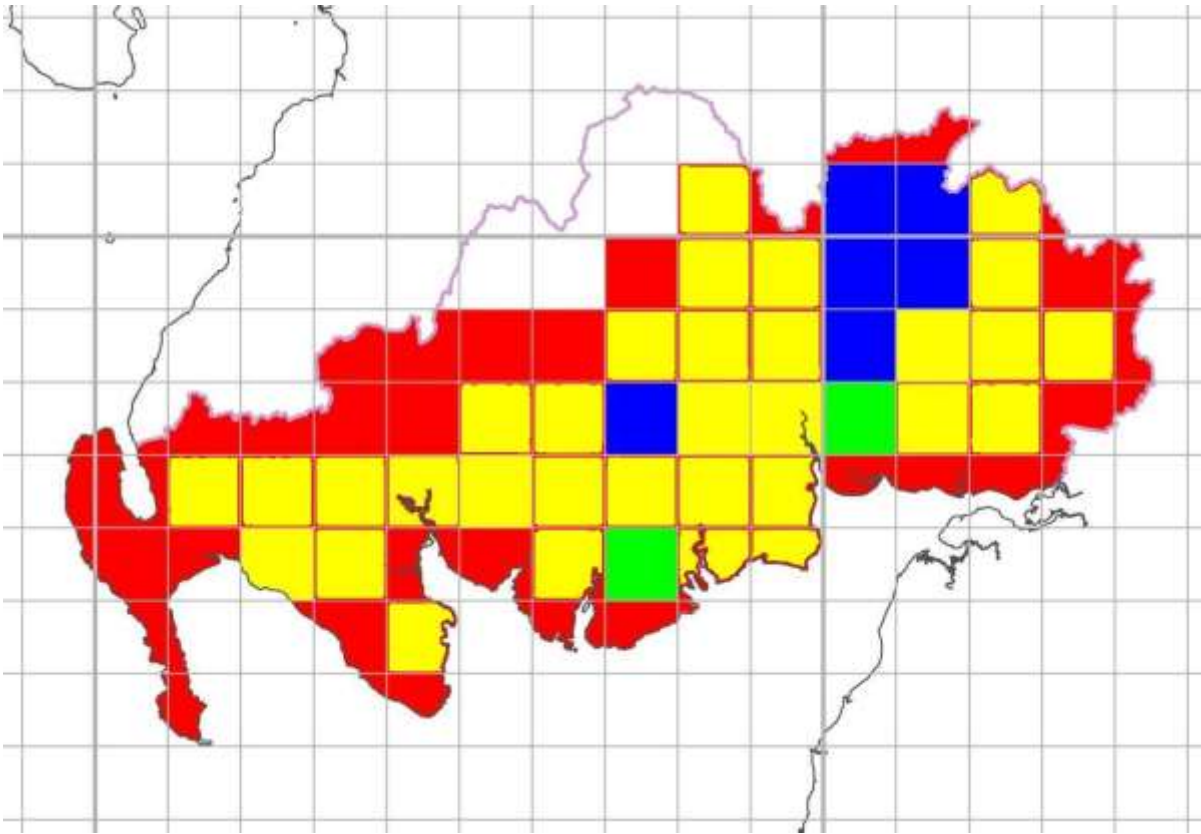


Figure 43 Bank Vole Records 2016

Status: Common/Widespread/Stable

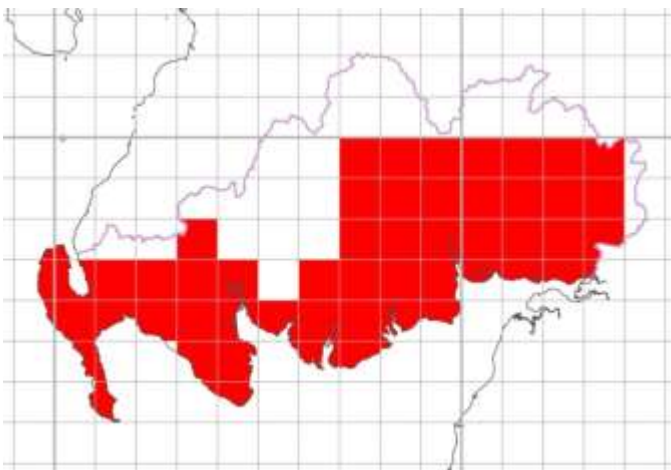


Figure 44 Bank Vole Records 2010

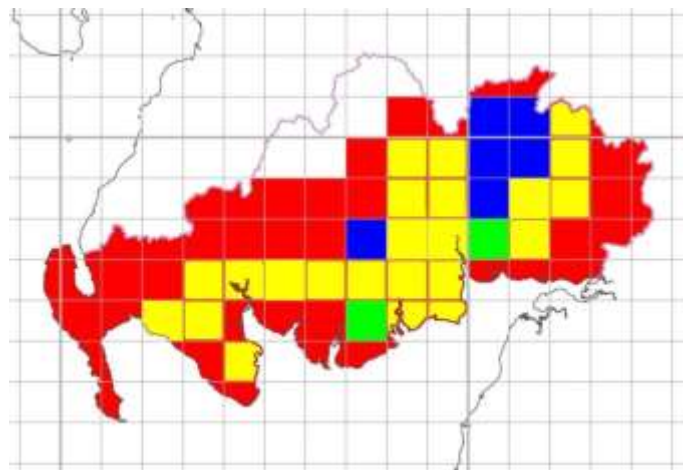


Figure 45 Bank Vole Records 2015

Short-tailed Field Vole *Microtus agrestis*

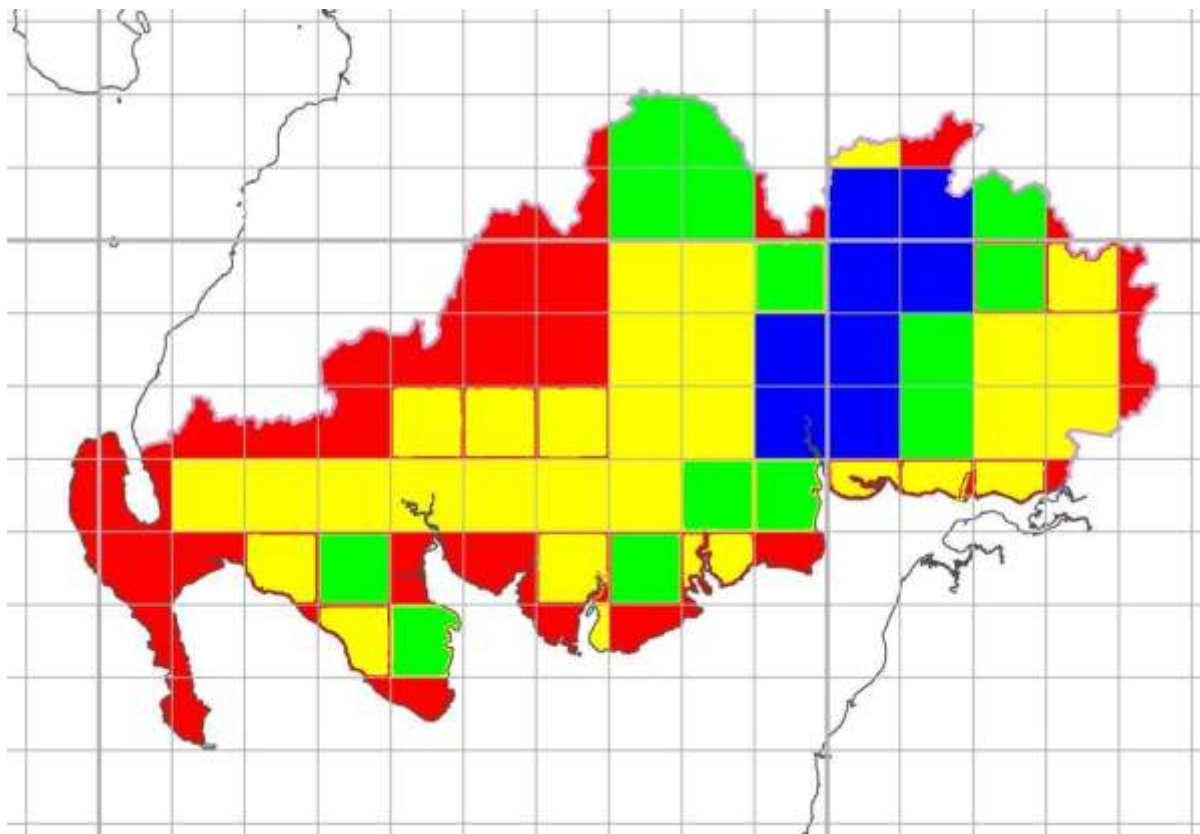


Figure 46 Field Vole Records 2016

Status: Abundant/Widespread/Stable

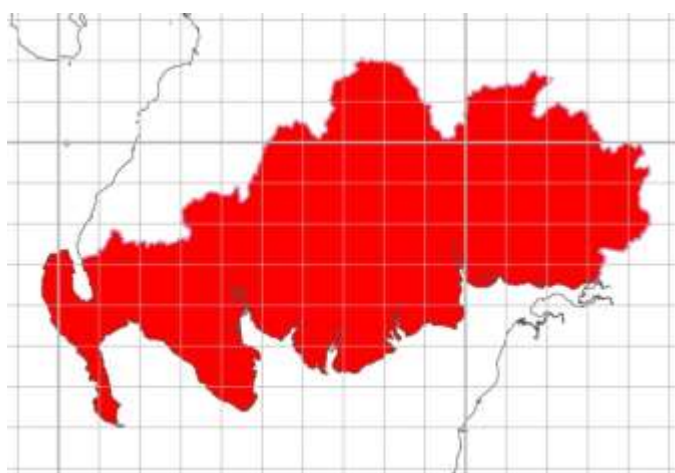


Figure 47 Field Vole Records 2010

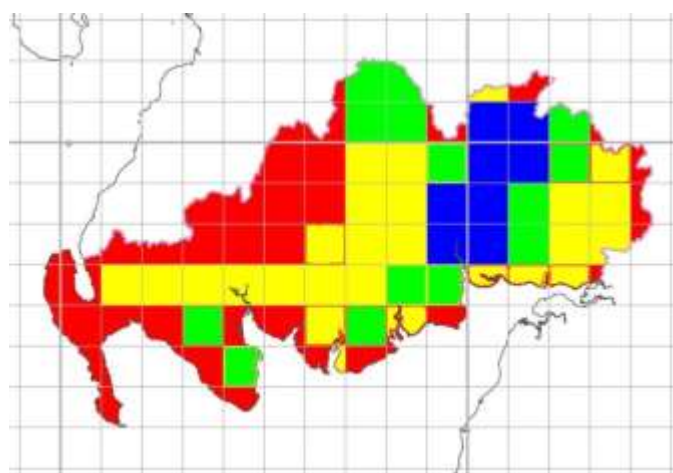


Figure 489 Field Vole Records 2015

Water Vole *Arvicola amphibious*

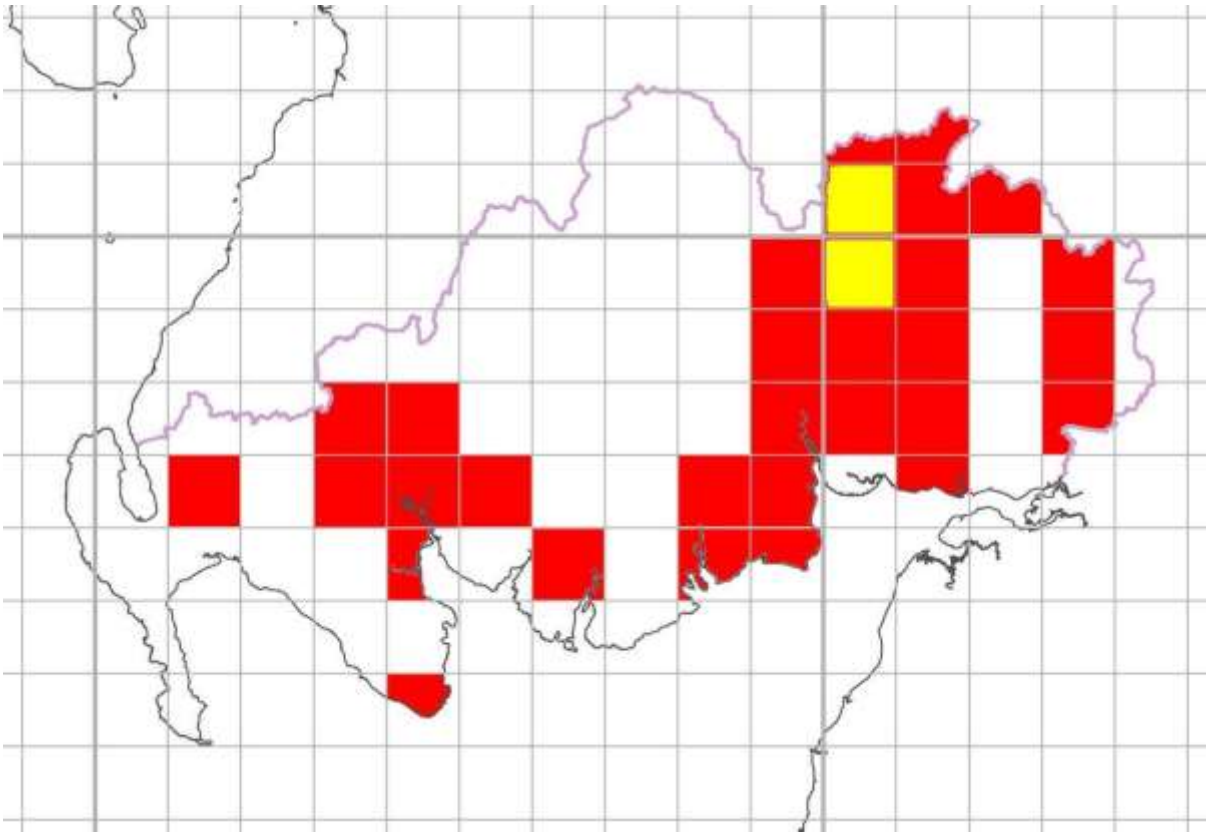


Figure 49 Water Vole Records 2016

Status: Uncommon/Fairly Localised/Stable/**Endangered**

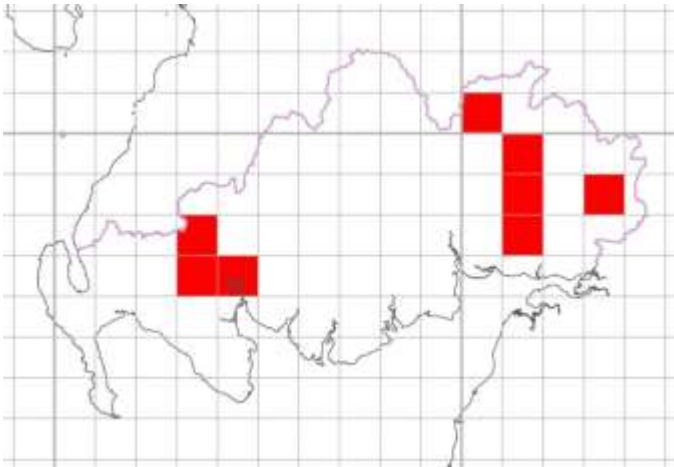


Figure 50 Water Vole Records 2010

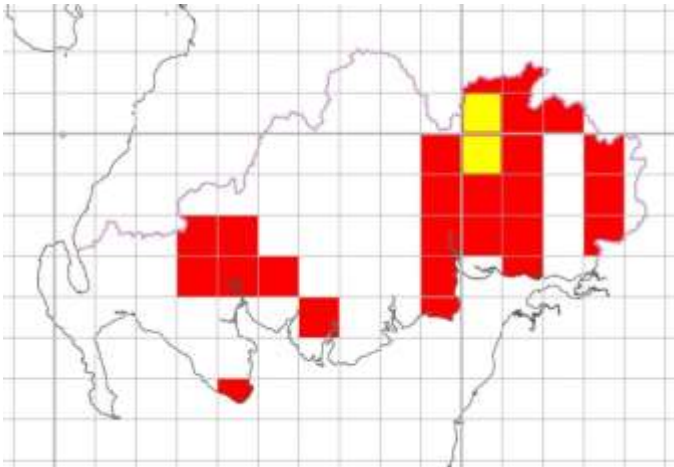


Figure 51 Water Vole Records 2015

Wood (or Long-tailed Field) Mouse *Apodemus sylvaticus*

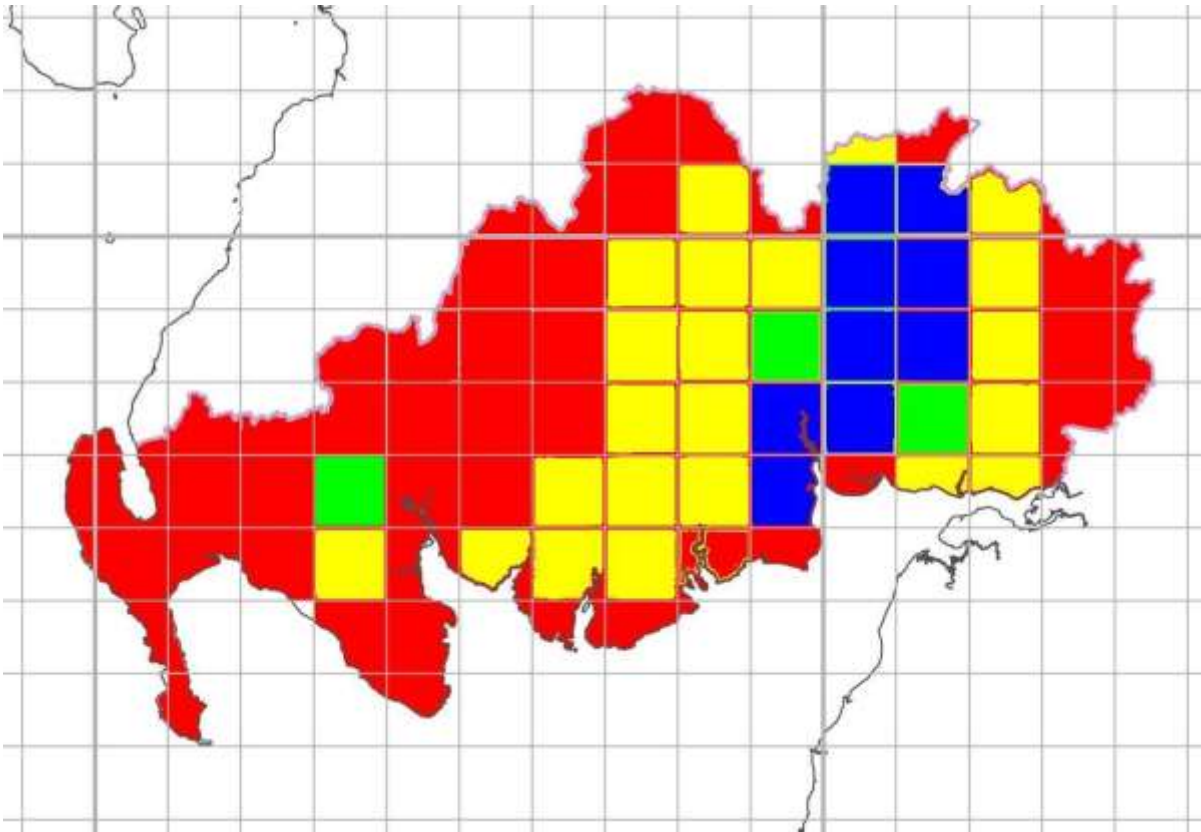


Figure 52 Wood Mouse Records 2016

Status: Common/Widespread/Stable

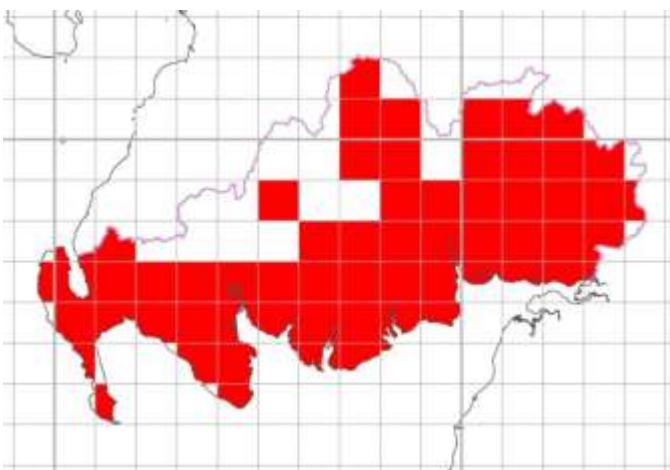


Figure 53 Wood Mouse Records 2010

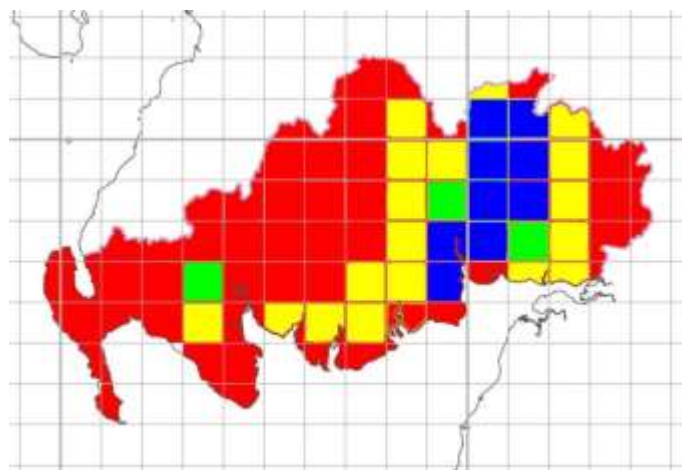


Figure 54 Wood Mouse Records 2015

Harvest Mouse *Micromys minutus*

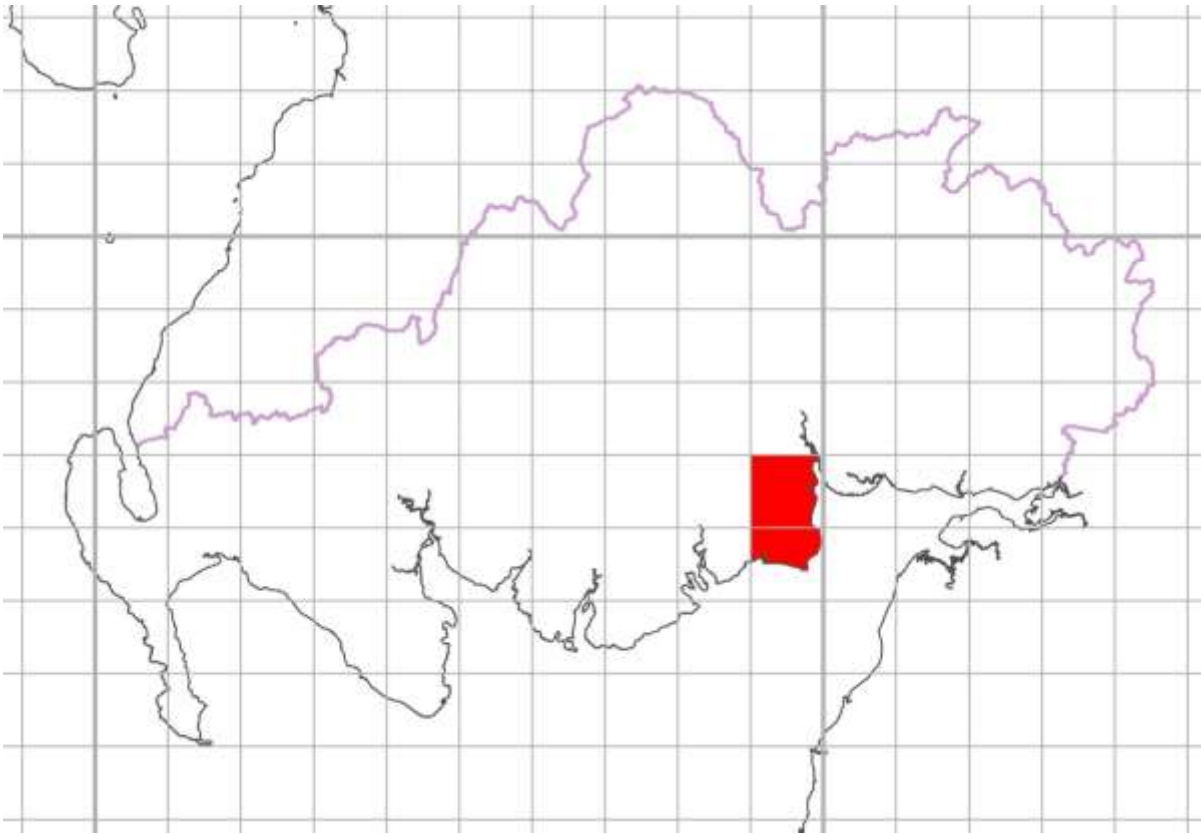


Figure 55 Harvest Mouse Records 2016

Status: Rare/Very Localised/Endangered

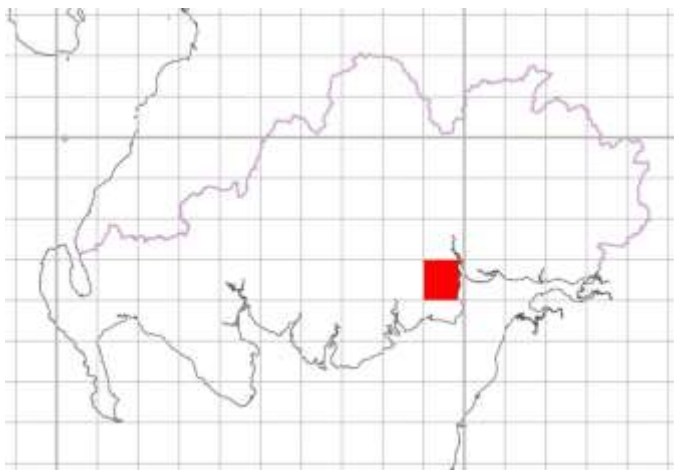


Figure 56 Harvest Mouse Records 2010

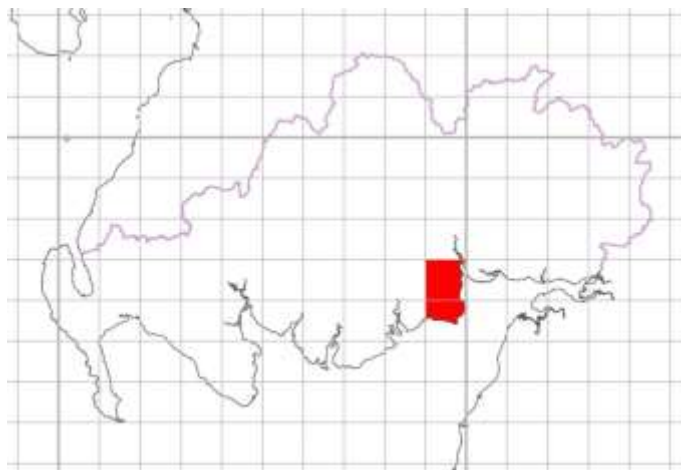


Figure 57 Harvest Mouse Records 2015

House Mouse *Mus domesticus*

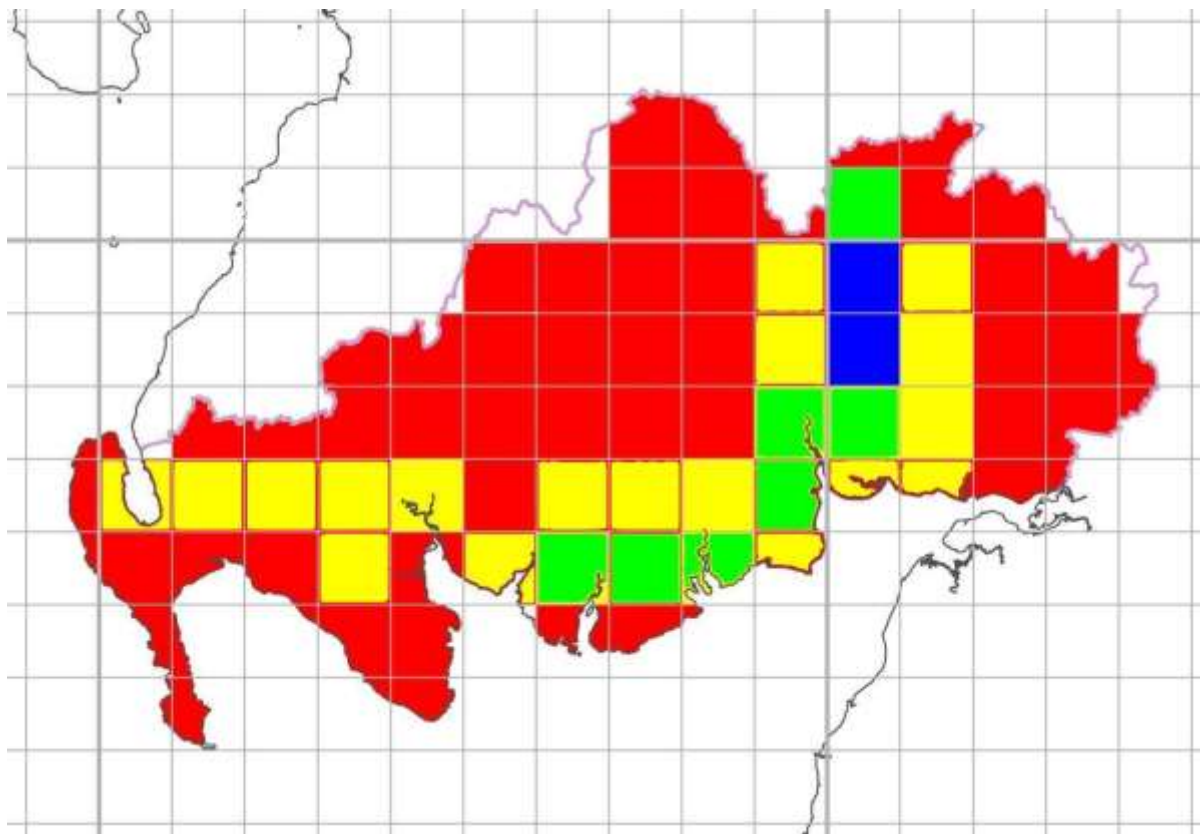


Figure 58 House Mouse Records 2016

Status: Common/Widespread/Stable

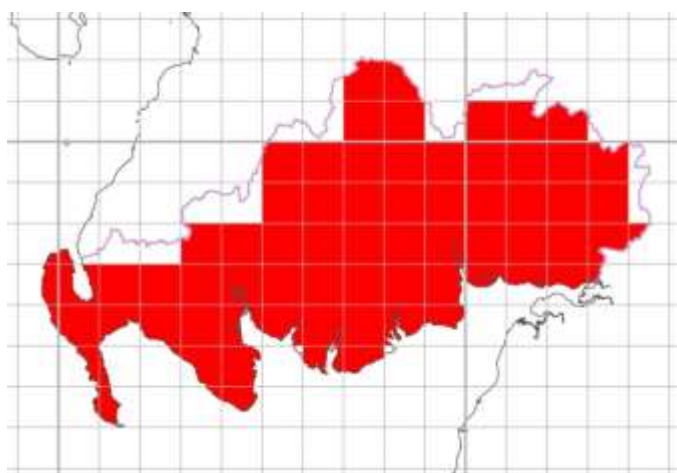


Figure 59 House Mouse Records 2010

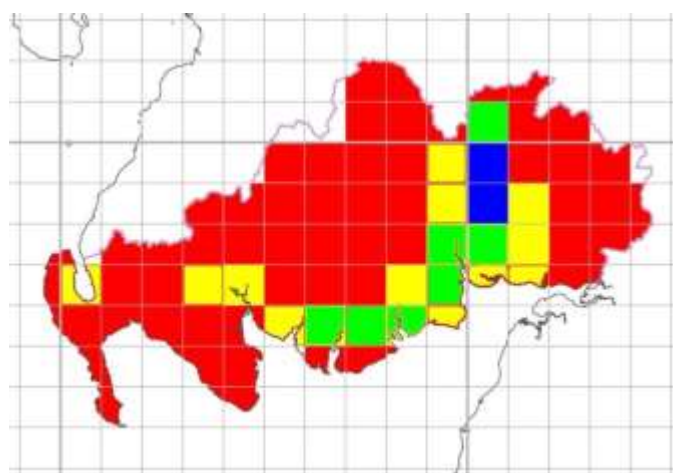


Figure 60 House Mouse Records 2015

Brown Rat *Rattus norvegicus*

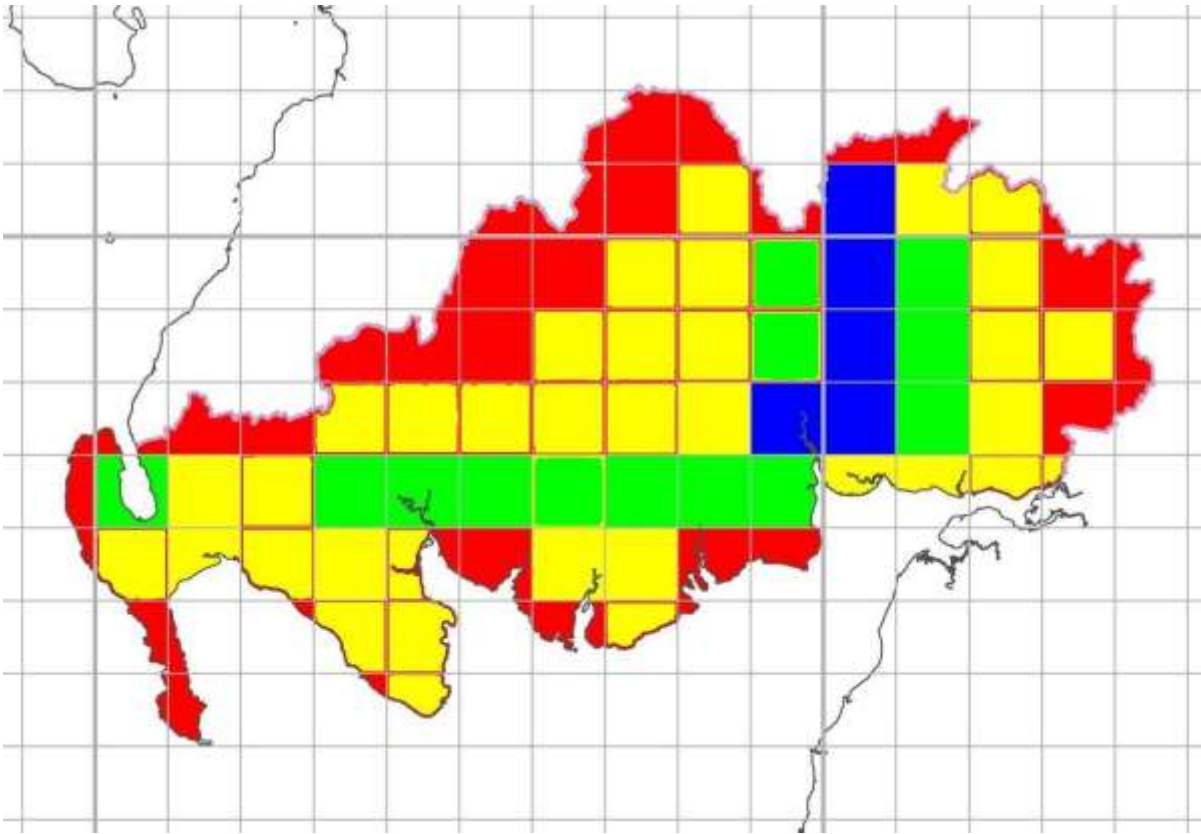


Figure 61 Brown Rat Records 2016

Status: Common/Widespread/Stable

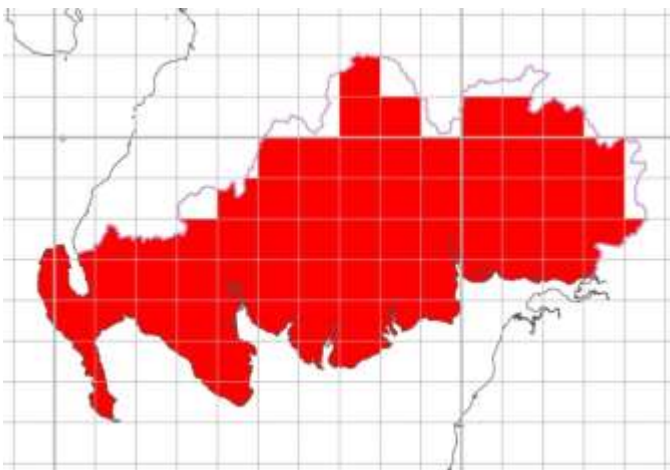


Figure 62 Brown Rat Records 2010

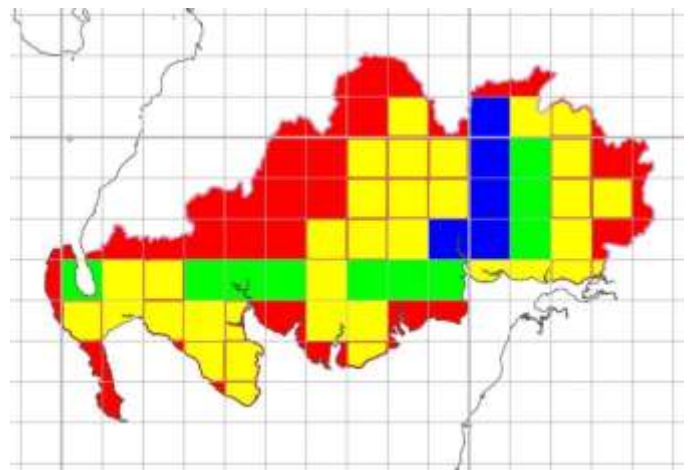


Figure 63 Brown Rat Records 2015

Rabbit *Oryctolagus cuniculus*

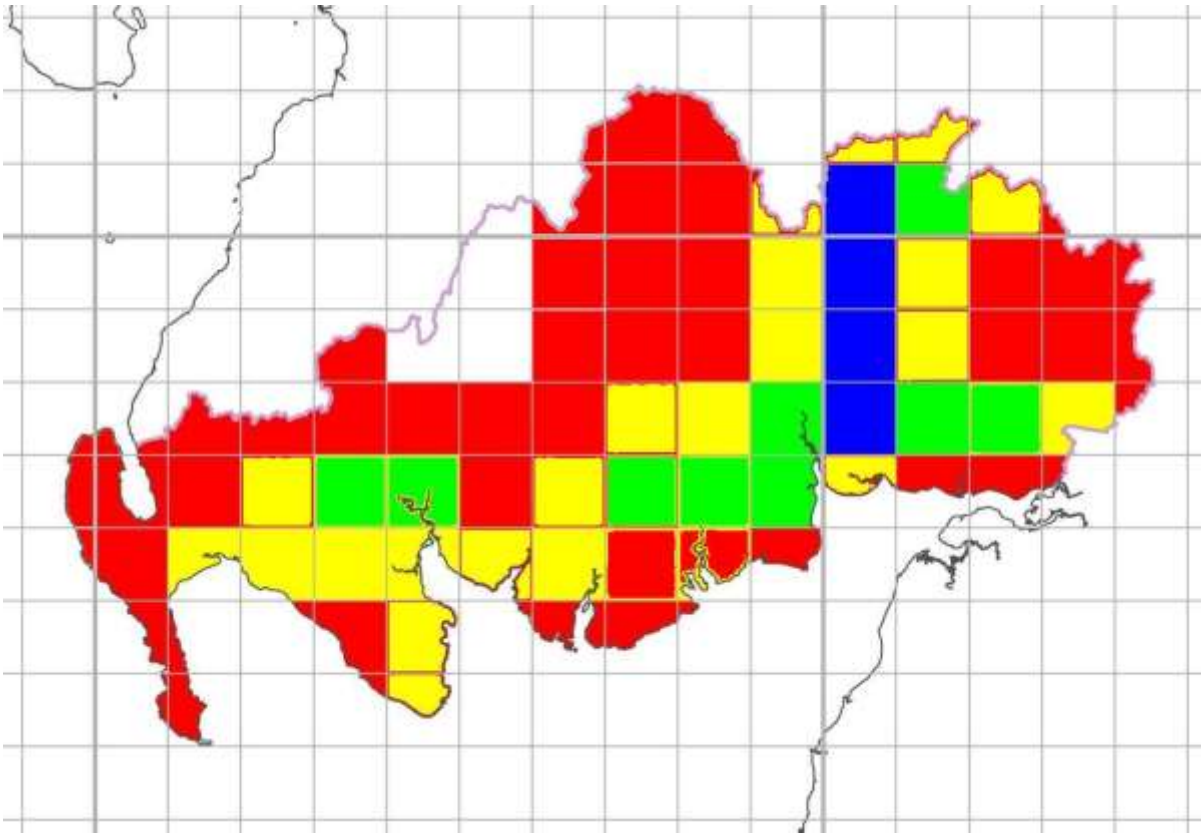


Figure 64 Rabbit Records 2016

Status: Common/Widespread/Declining

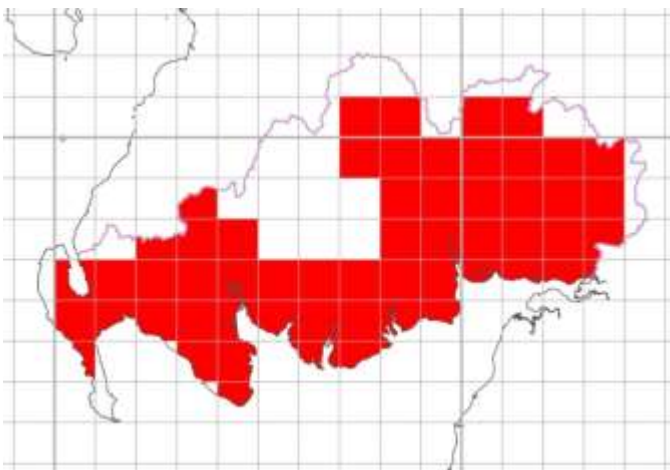


Figure 65 Rabbit Records 2010

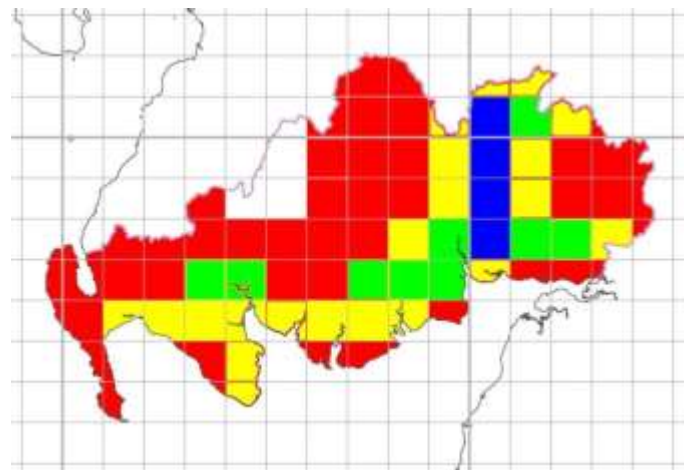


Figure 66 Rabbit Records 2015

Brown Hare *Lepus europaeus*

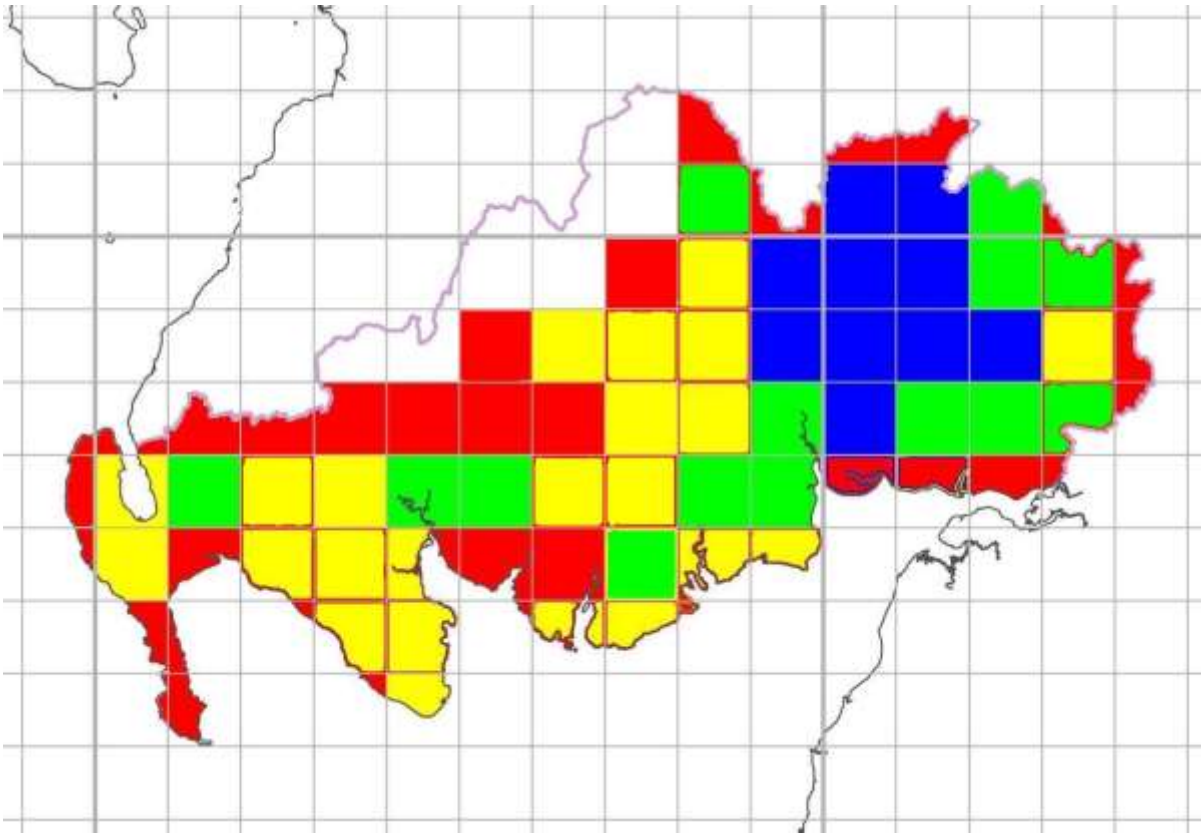


Figure 67 Brown Hare Records 2016

Status: Fairly Common/Fairly Widespread/Stable/ **Seriously at risk from persecution by Man**

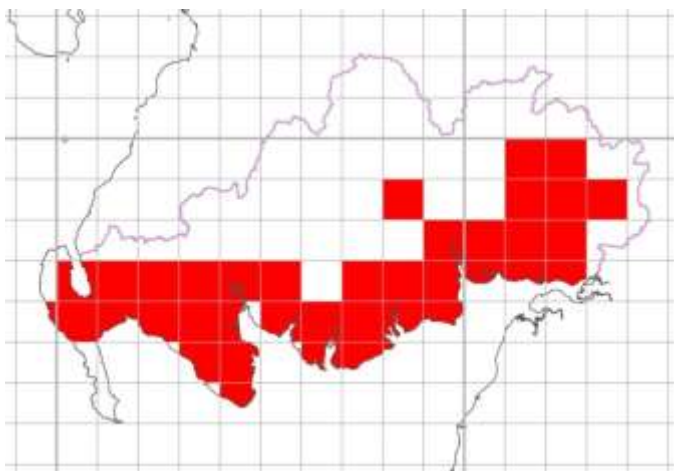


Figure 6810 Brown Hare Records 2010

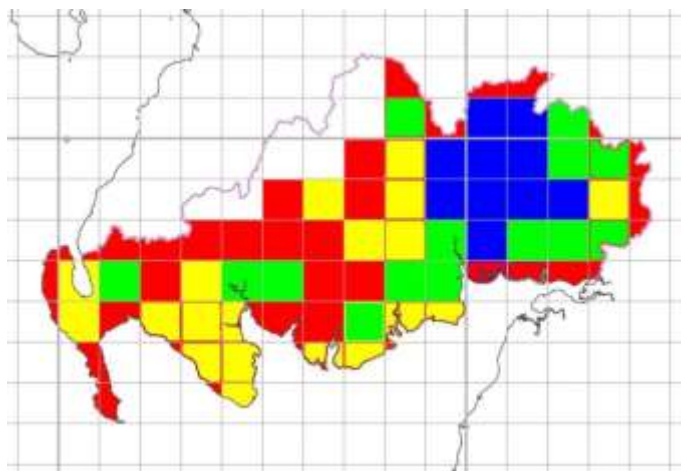


Figure 69 Brown Hare Records 2015

Mountain Hare *Lepus timidus*

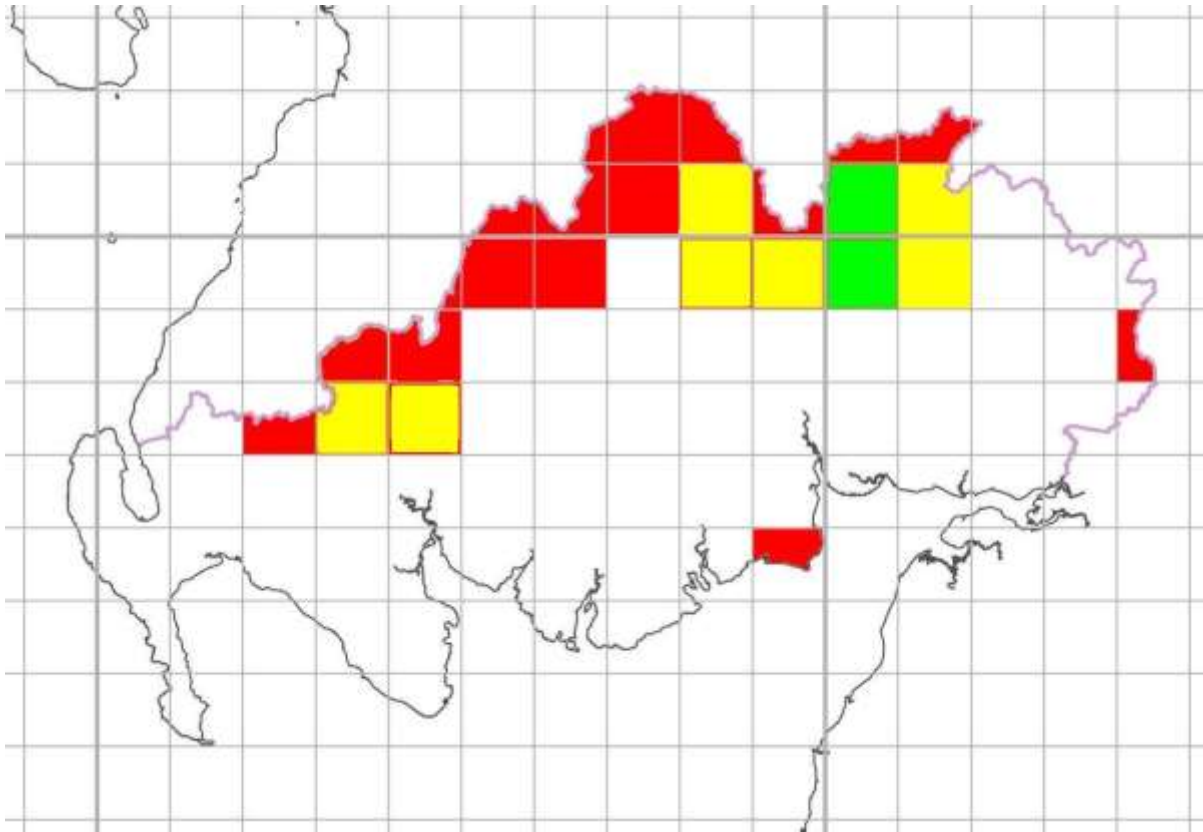


Figure 70 Mountain Hare Records 2016

Status: Uncommon/Localised/Stable

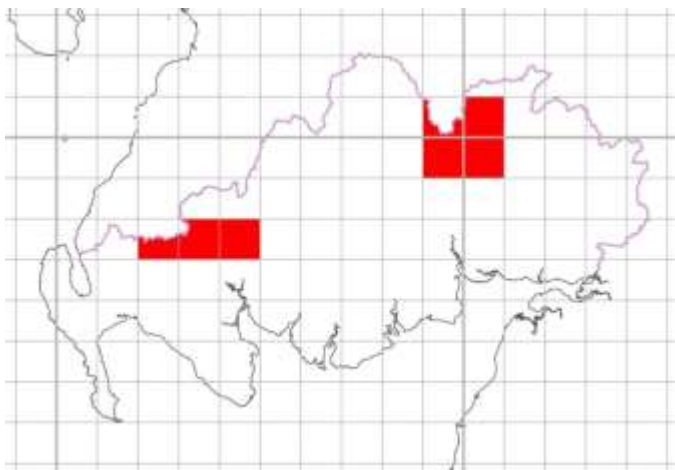


Figure 71 Mountain Hare Records 2010

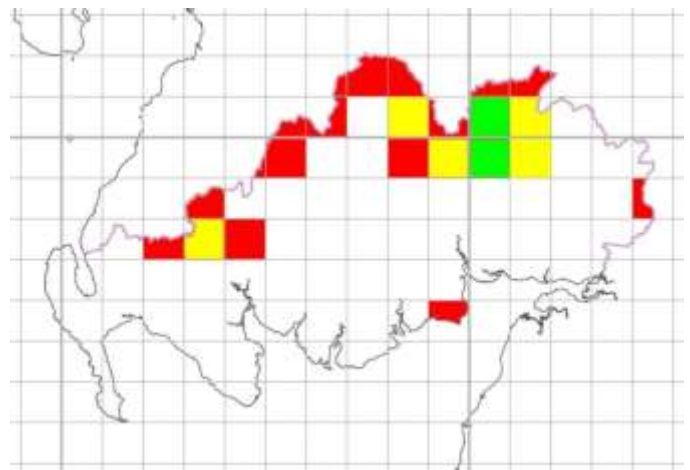


Figure 72 Mountain Hare Records 2015

Red Fox *Vulpes vulpes*

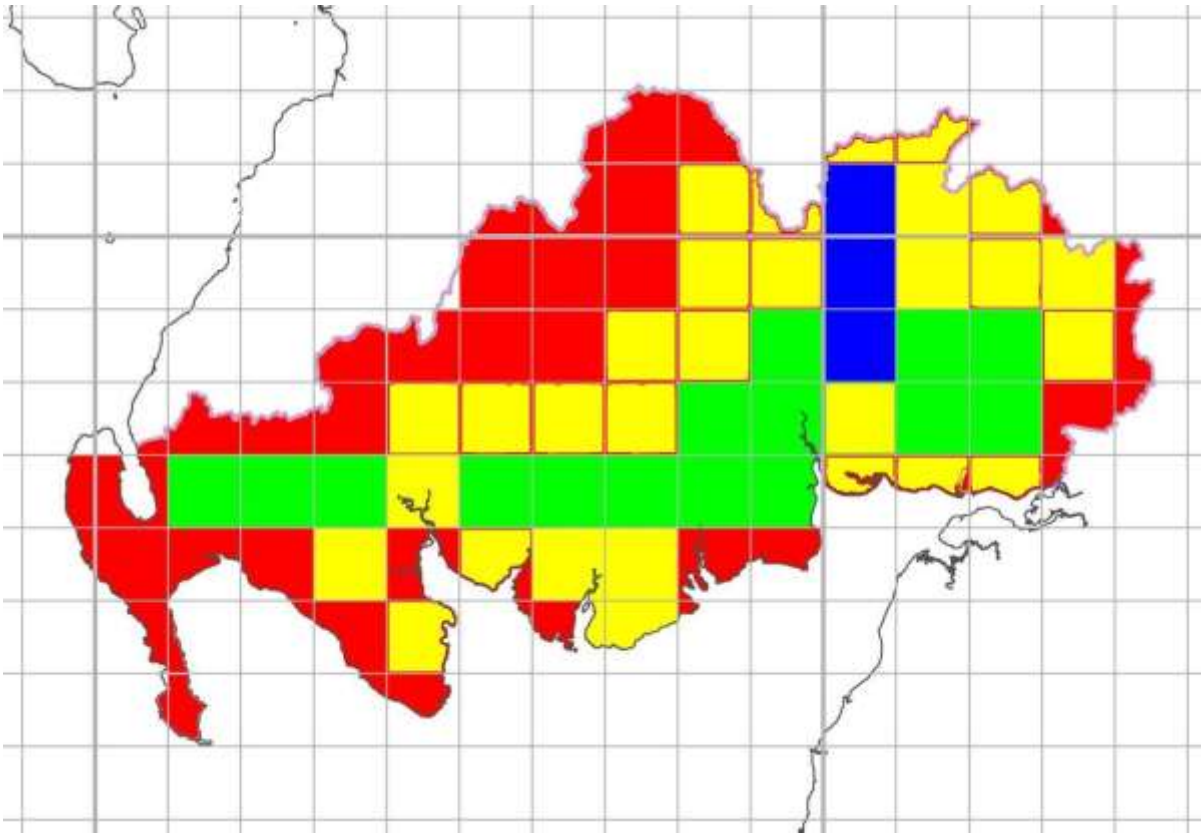


Figure 73 Red Fox Records 2016

Status: Common/Widespread/Stable

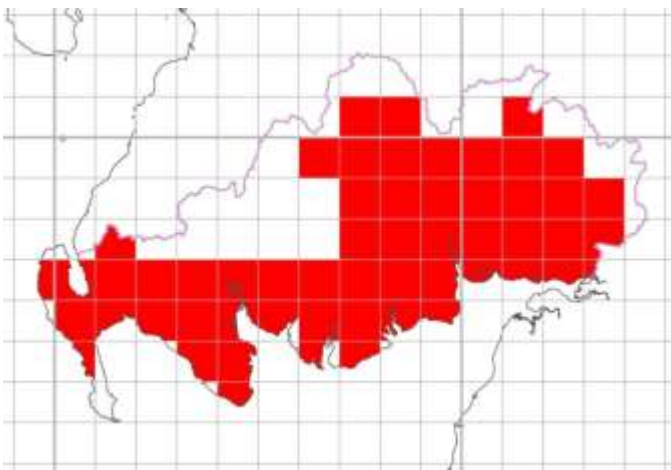


Figure 74 Red Fox Records 2010

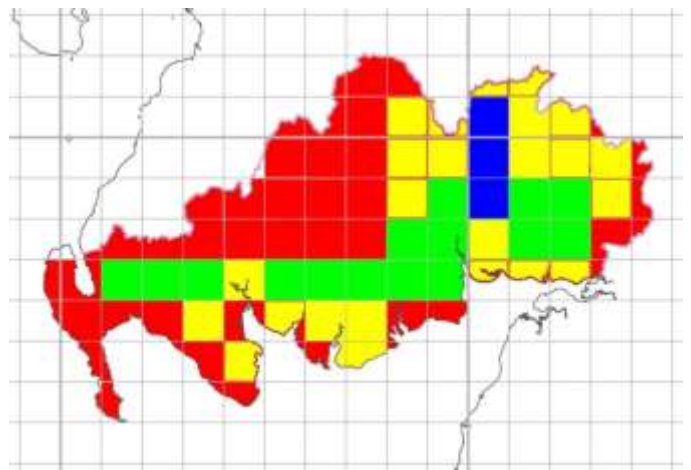


Figure 7511 Red Fox Records 2015

Pine Marten *Martes martes*

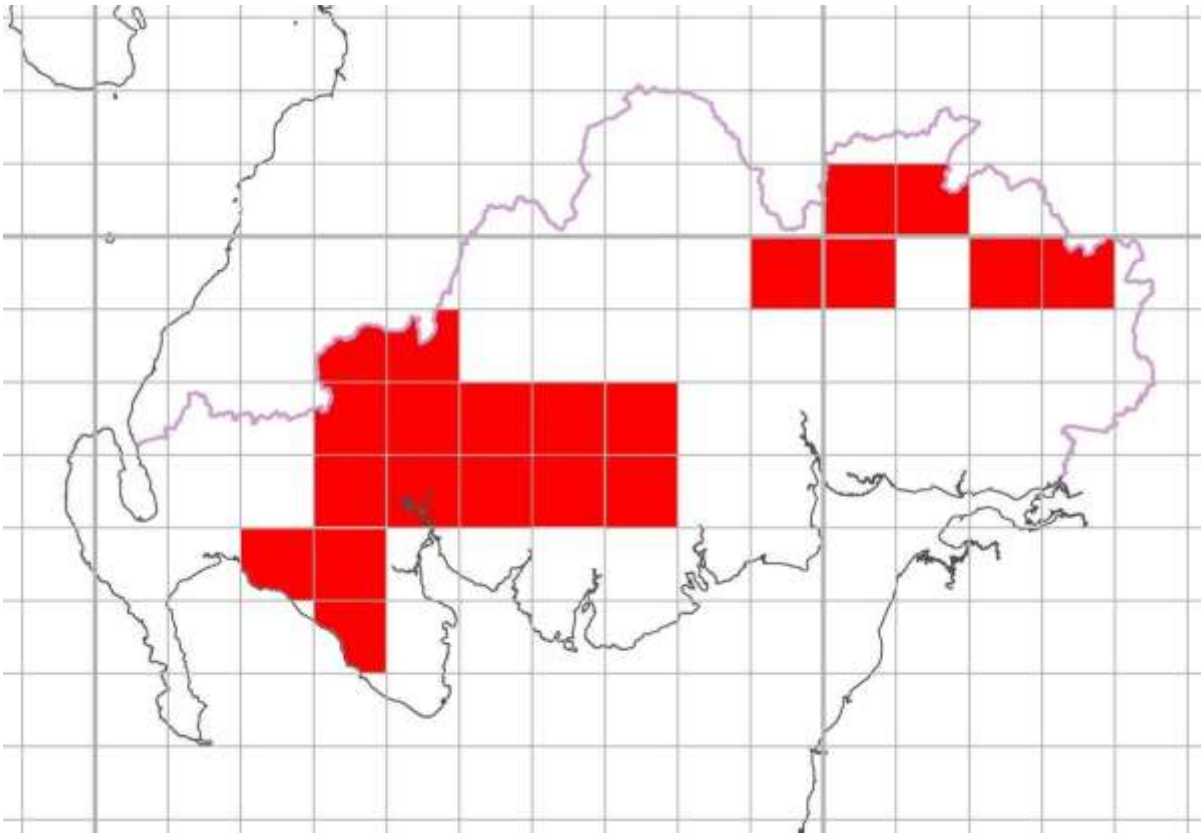


Figure 76 Pine Marten Records 2016

Status: Scarce/Fairly Localised/Endangered

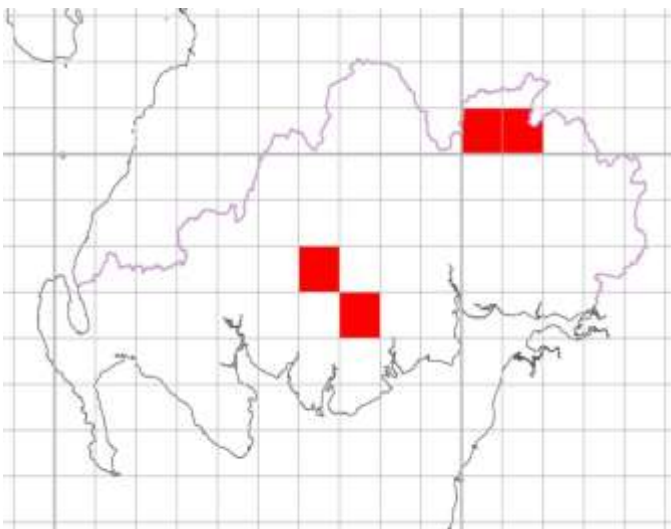


Figure 77 Pine Marten Records 2010

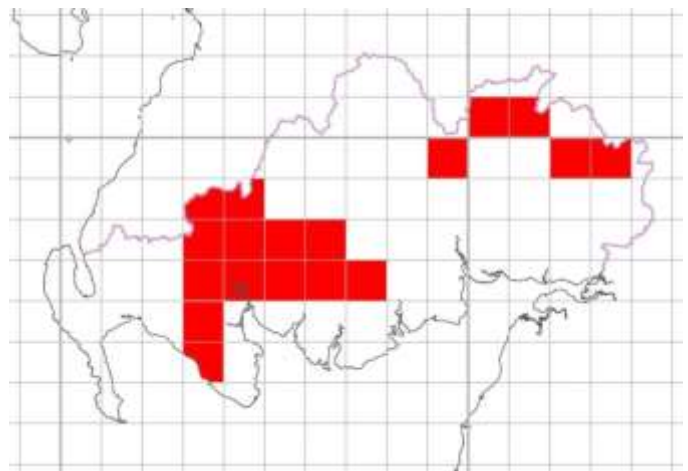


Figure 78 Pine Marten Records 2015

Stoat *Mustela erminea*

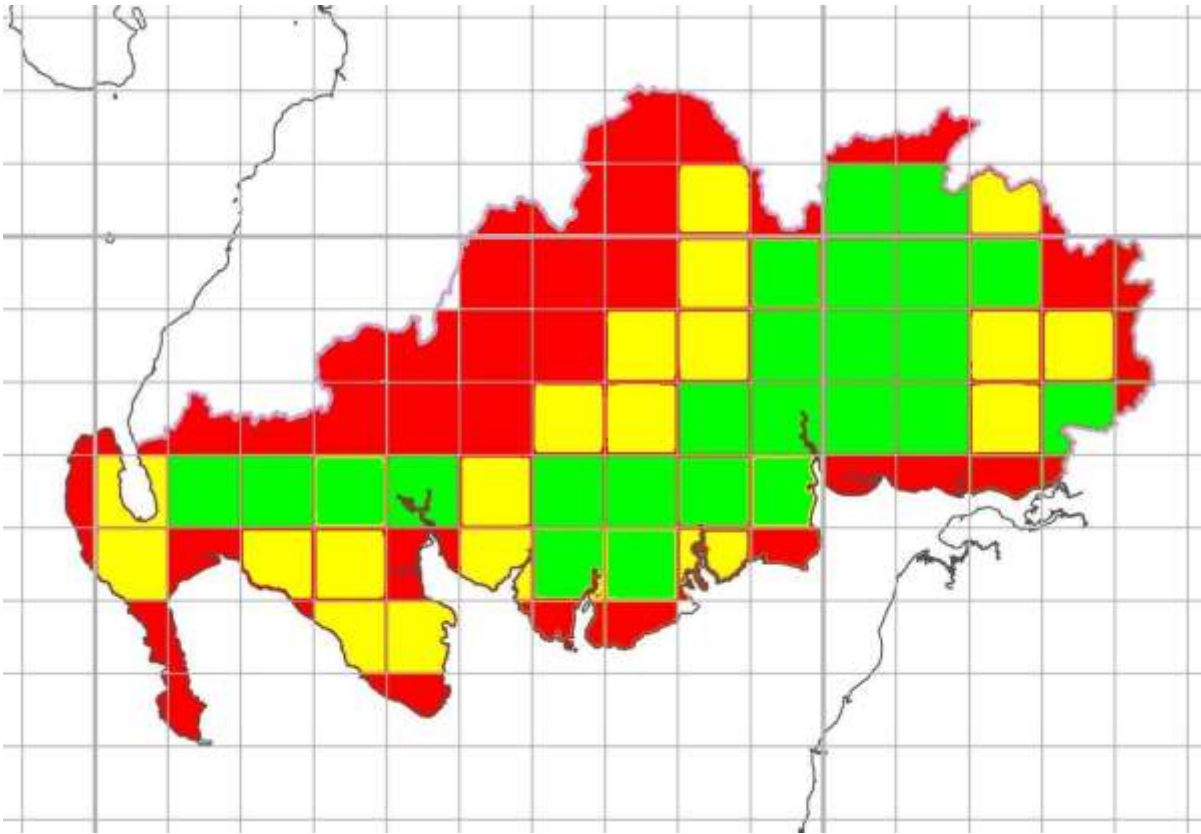


Figure 79 Stoat Records 2016

Status: Fairly Common/Widespread/Stable

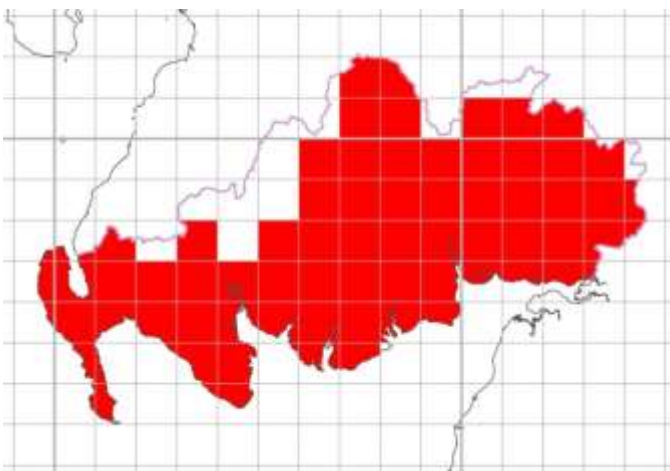


Figure 80 Stoat Records 2010

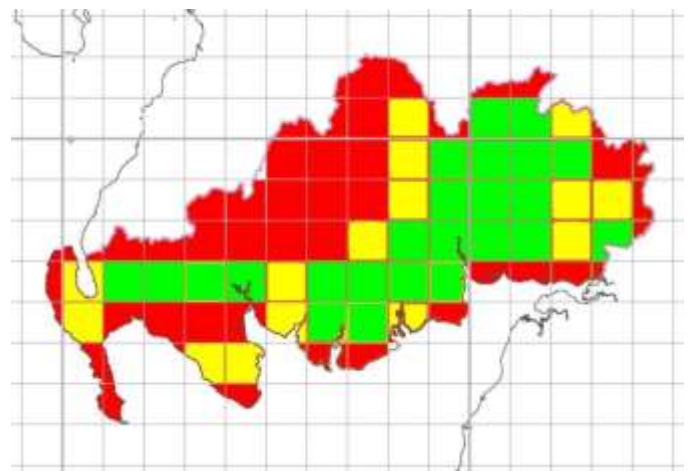


Figure 81 Stoat Records 2015

Weasel *Mustela nivalis*

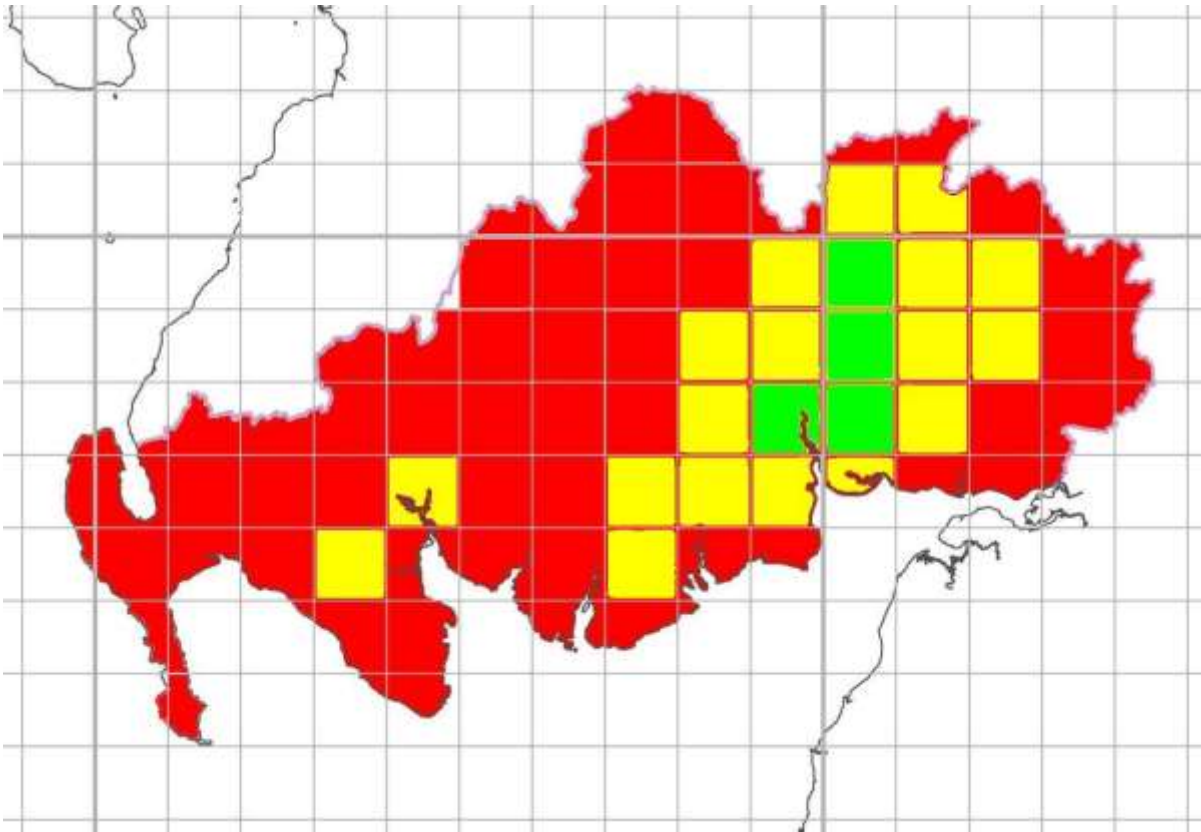


Figure 82 Weasel records 2016

Status: Fairly Common/Widespread/Stable

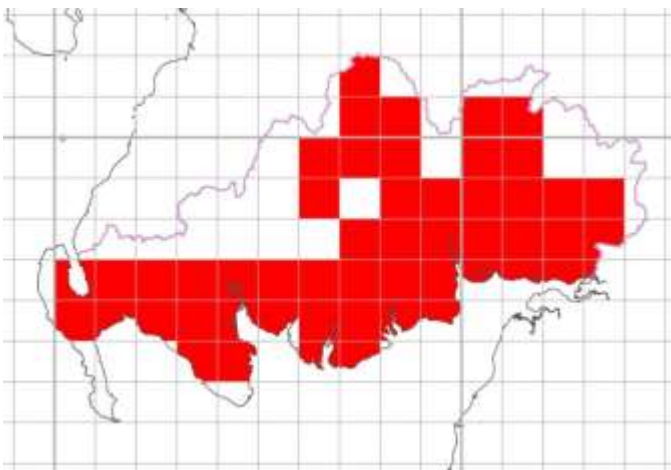


Figure 83 Weasel records 2010

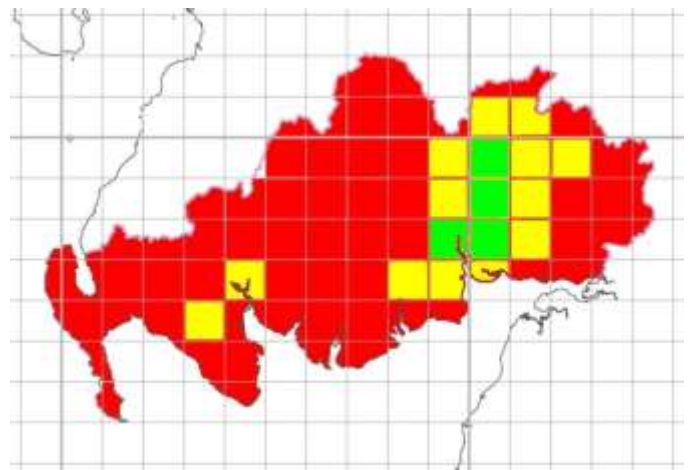


Figure 84 Weasel Records 2015

Polecat *Mustela putorius*

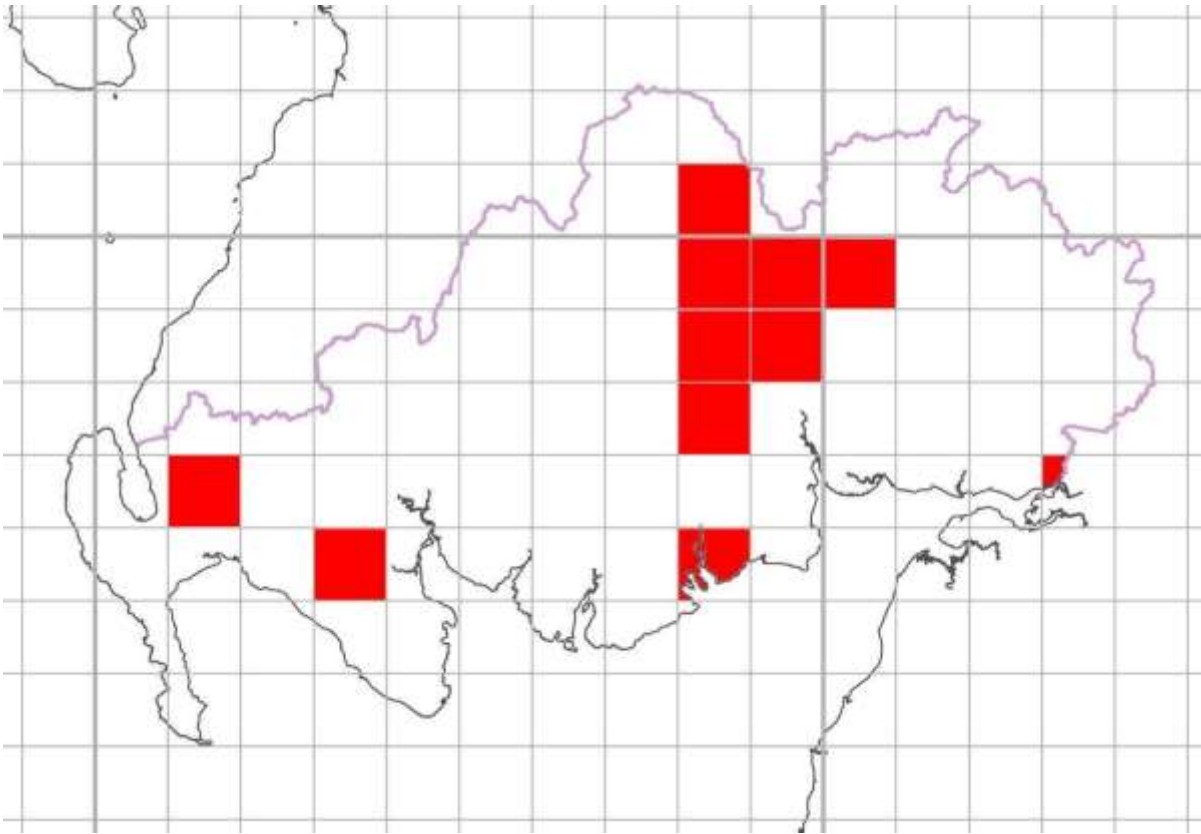


Figure 85 Polecat Records 2016

Status: Rare/Very Localised/Endangered

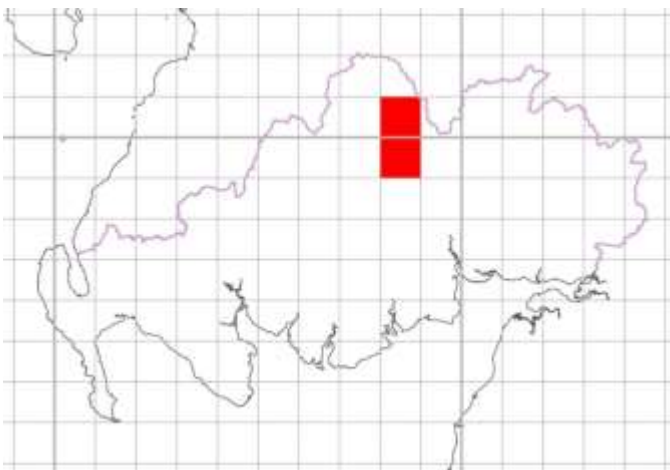


Figure 86 Polecat Records 2010

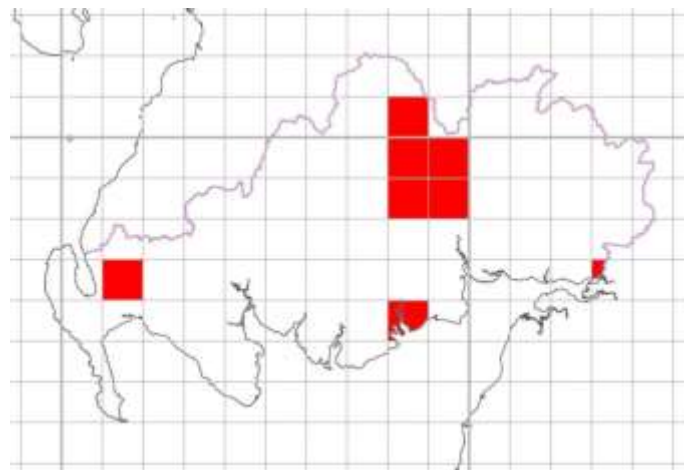


Figure 87 Polecat Records 2015

Badger *Meles meles*

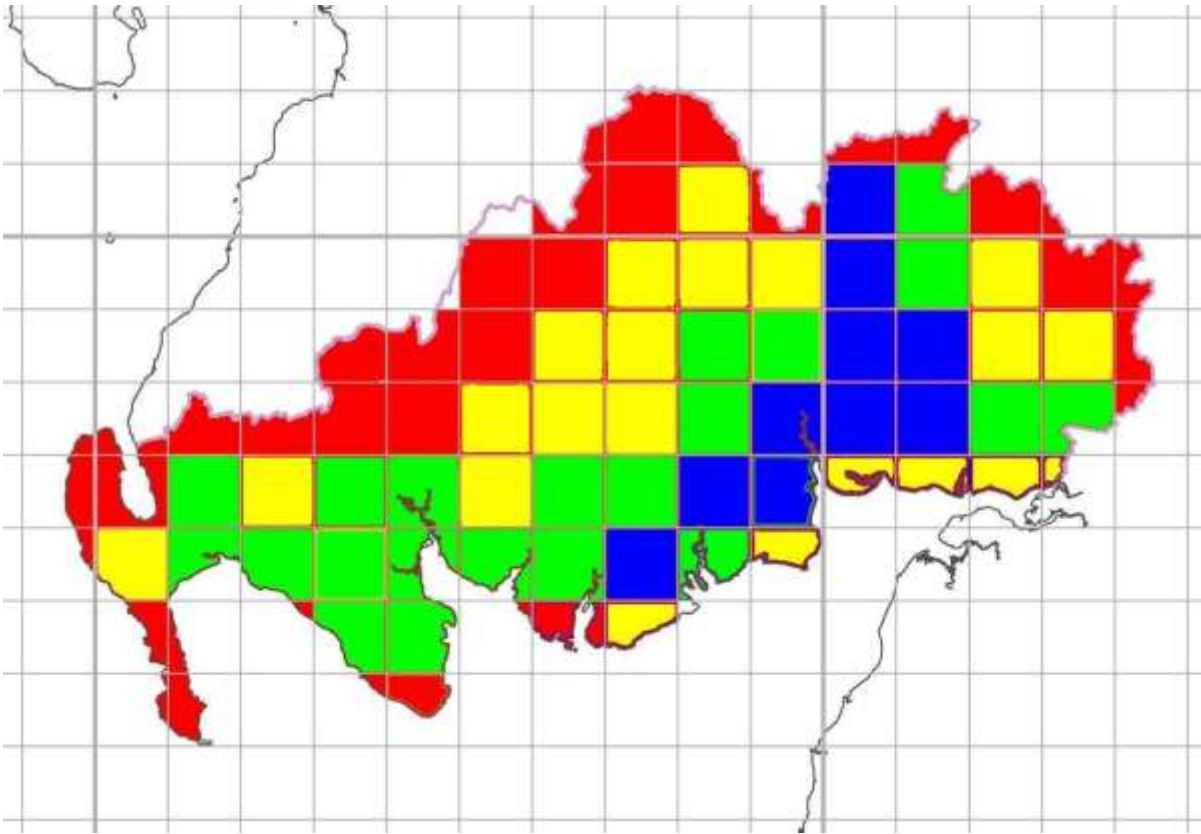


Figure 88 Badger Records 2016

Status: Common/Widespread/ Seriously at risk from persecution by Man

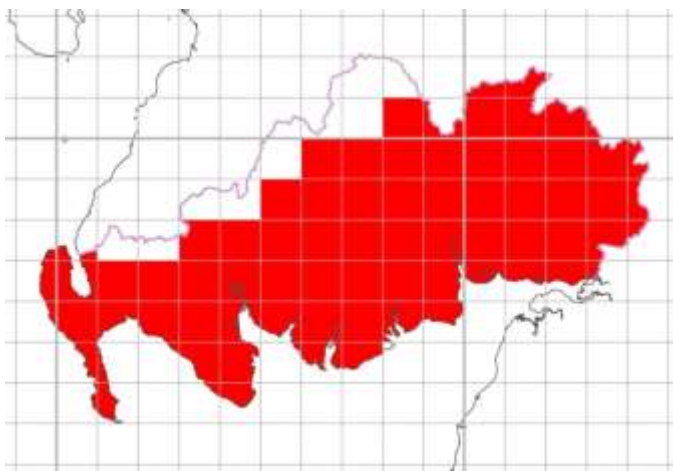


Figure 89 Badger Records 2010

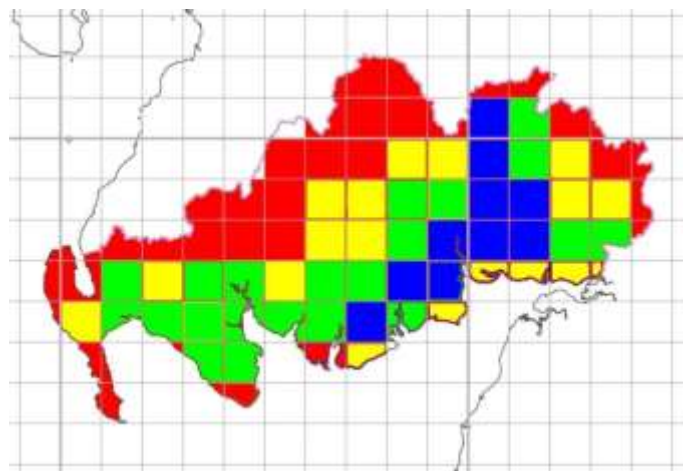


Figure 90 Badger Records 2015

Otter *Lutra lutra*

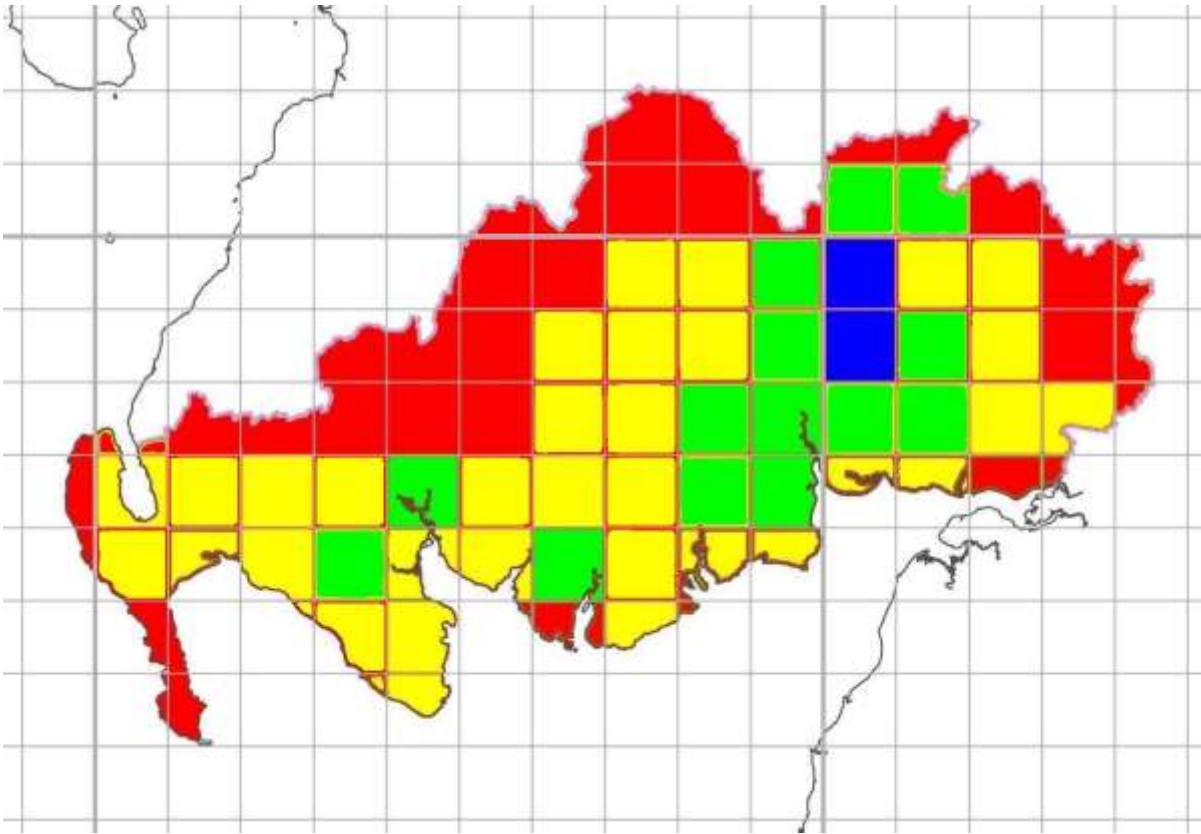


Figure 91 Otter Records 2016

Status: Fairly Common/Widespread/Increasing

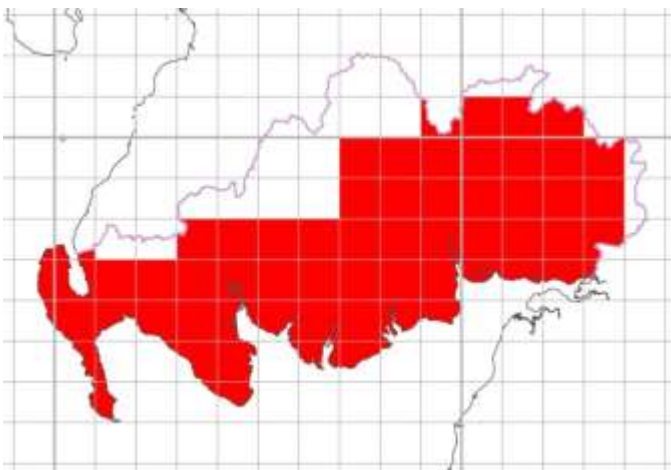


Figure 92 Otter Records 2010

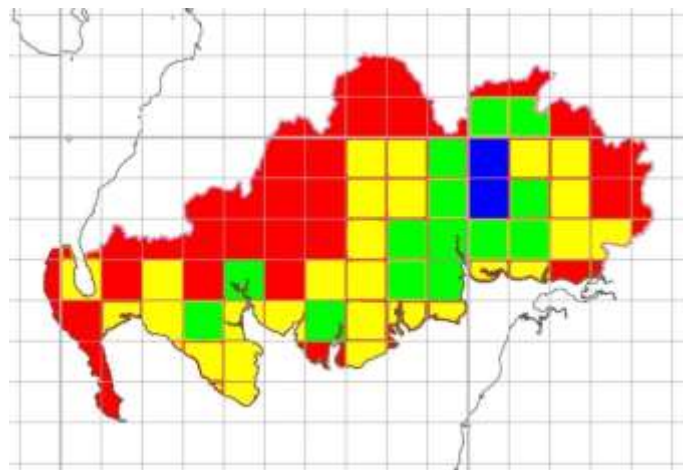


Figure 93 Otter Records 2015

American Mink *Neovison vison*

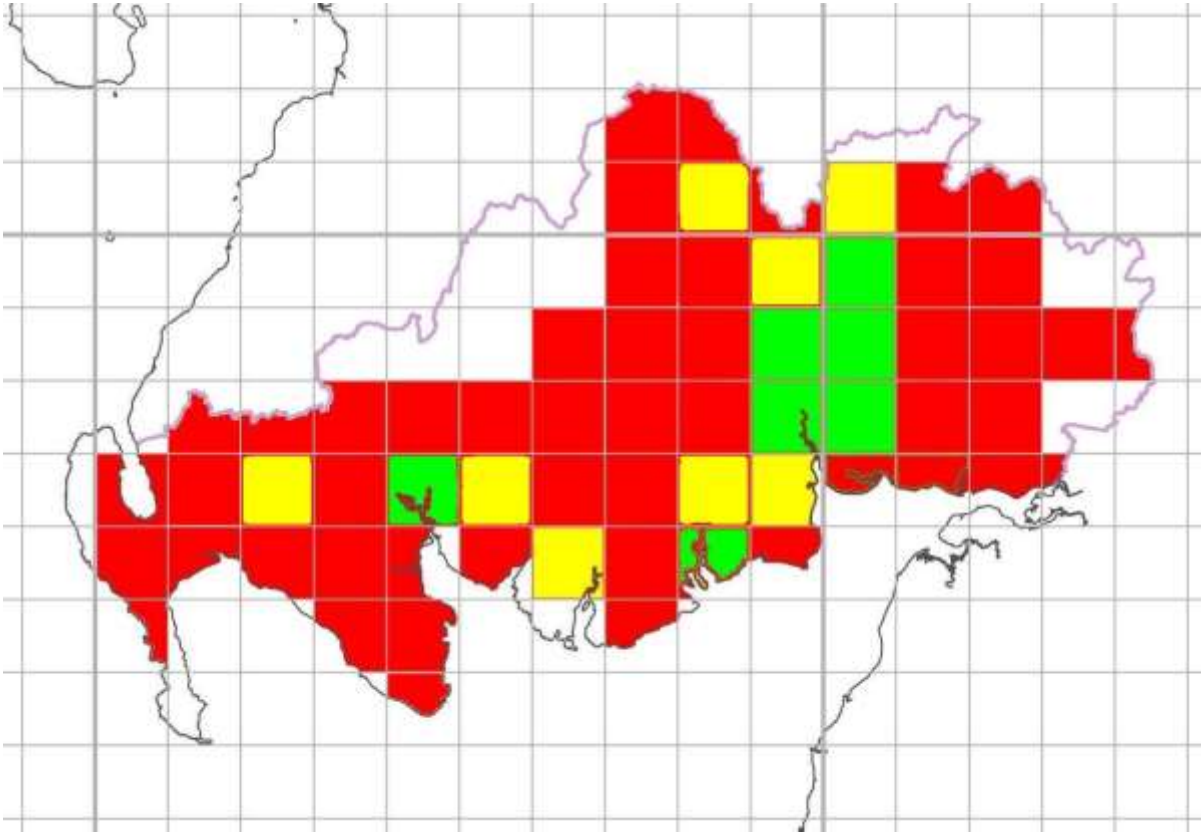


Figure 94 American Mink Records 2016

Status: Fairly Common/Fairly Widespread/ Invasive Pest

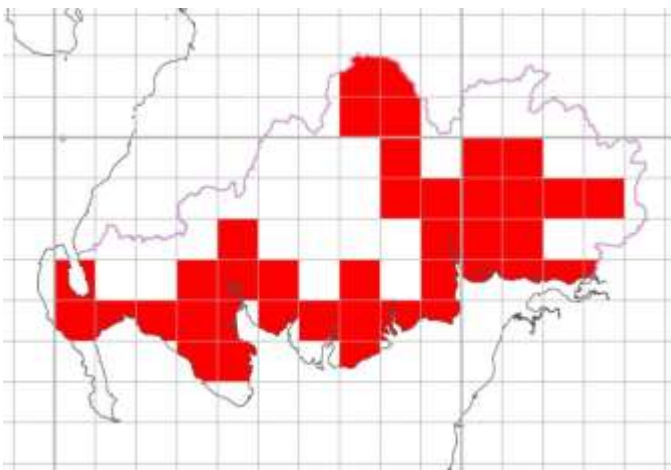


Figure 95 American Mink Records 2010

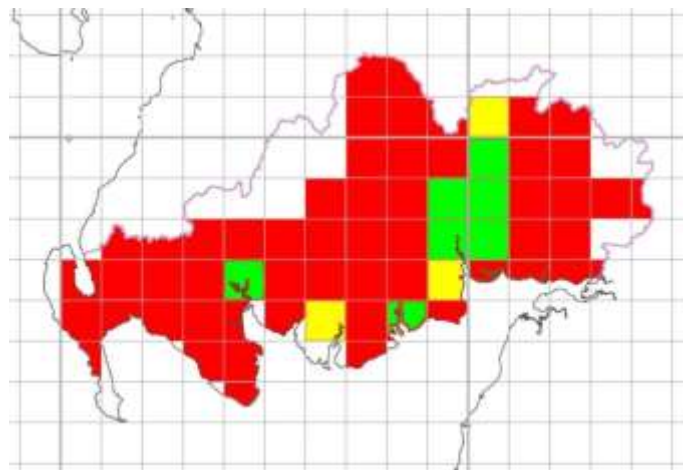


Figure 96 American Mink Records 2015

Red Deer *Cervus elaphus*

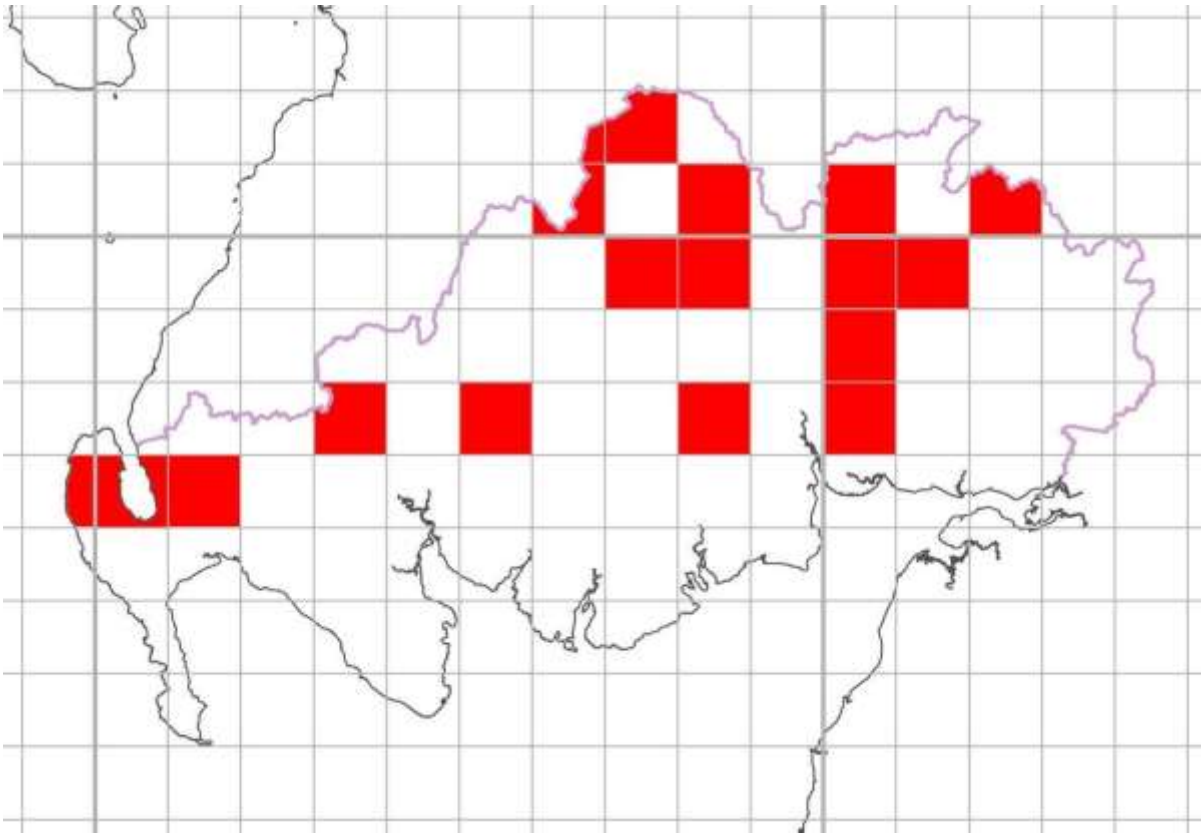


Figure 97 Red Deer Records 2016

Status: Common/Fairly Widespread/Stable

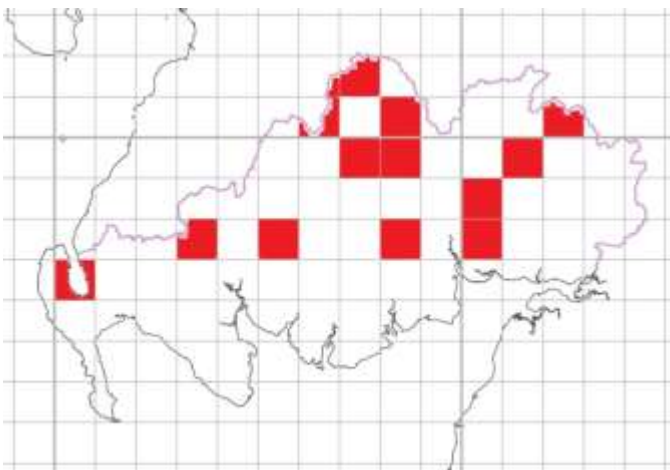


Figure 98 Red Deer Records 2010

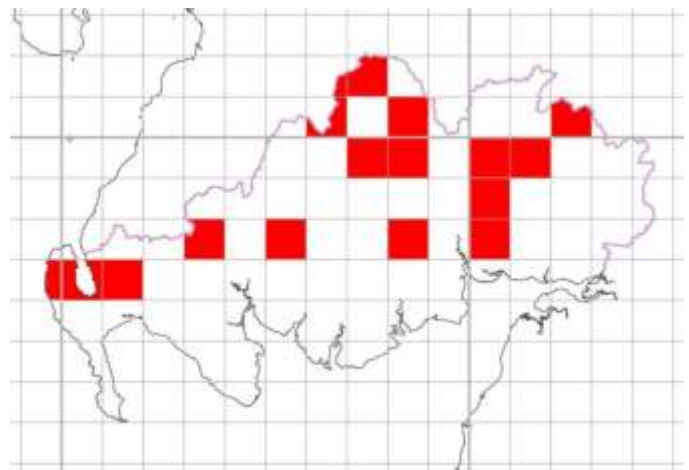


Figure 99 Red Deer Records 2015

Roe Deer *Capreolus capreolus*

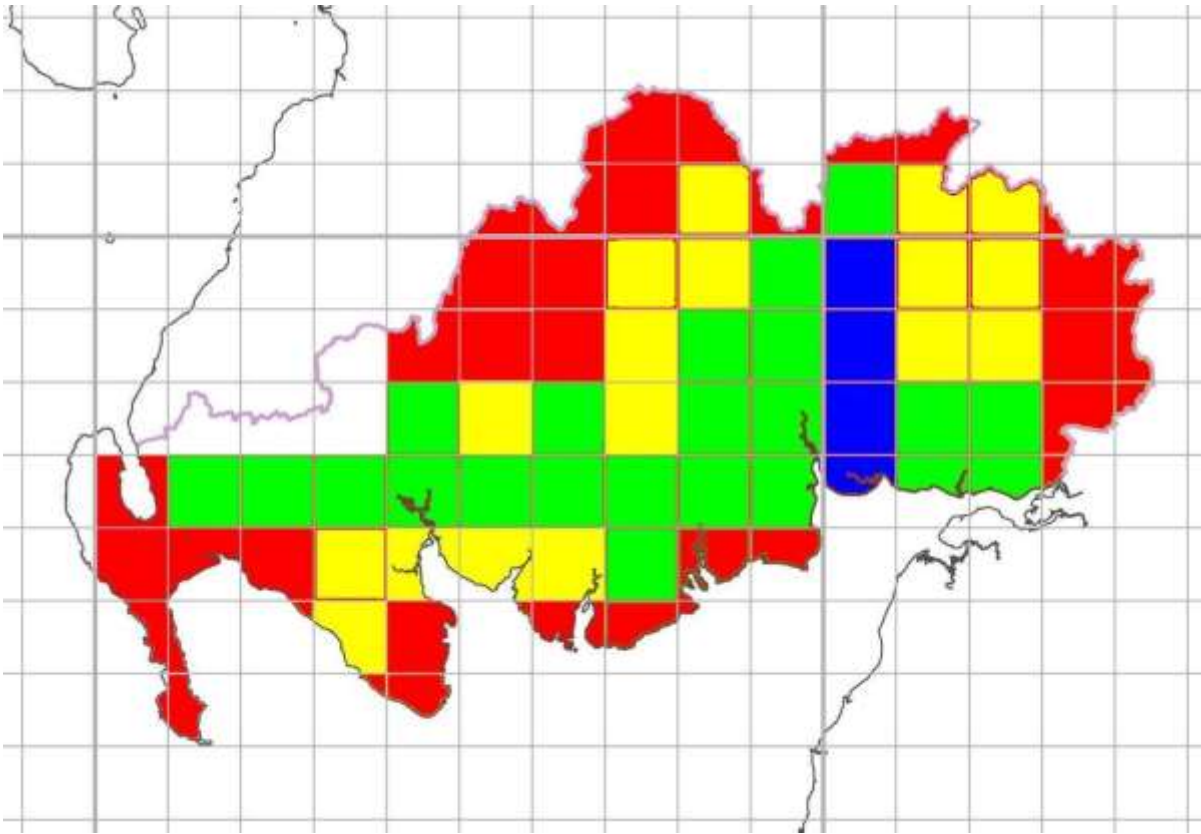


Figure 100 Roe Deer Records 2016

Status: Common/Fairly Widespread/Stable

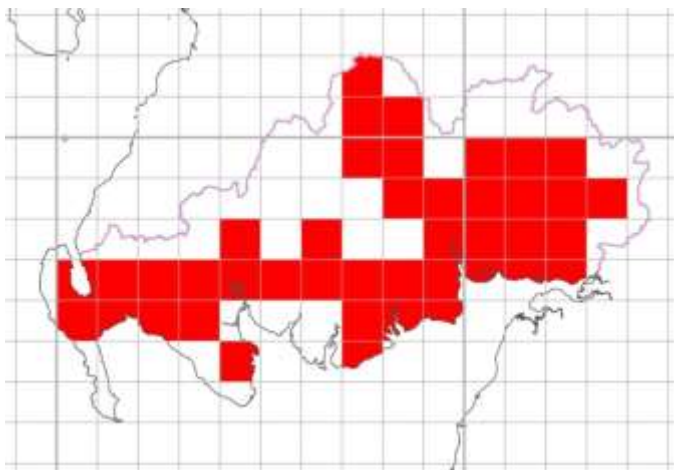


Figure 101 Roe Deer Records 2010

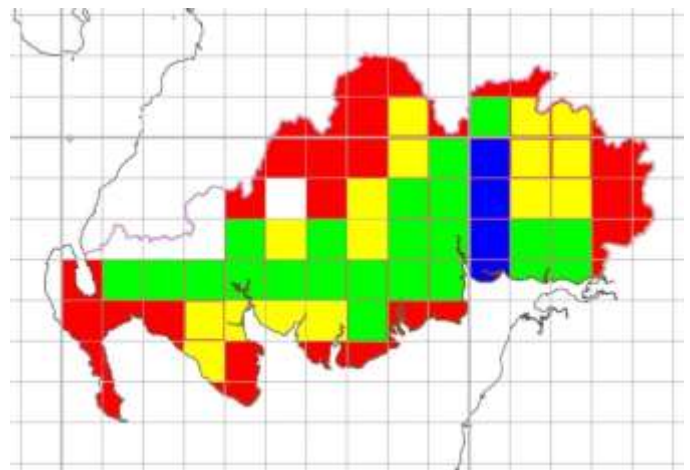


Figure 10212 Roe Deer Records 2015

Fallow Deer *Dama dama*

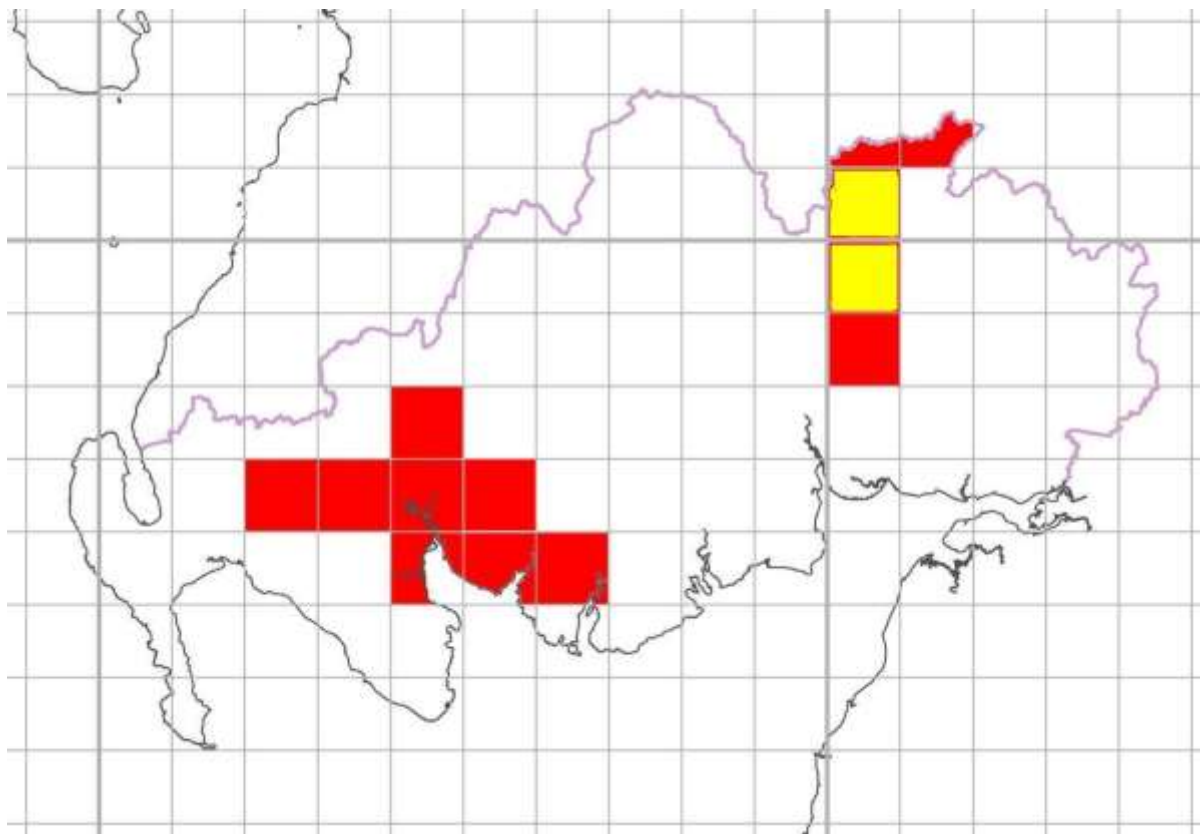


Figure 103 Fallow Deer Records 2016

Status: Common/Localised/Stable

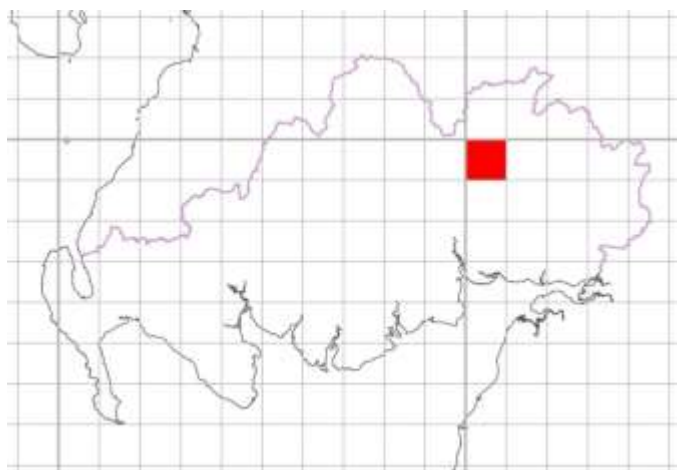


Figure 104 Fallow Deer Records 2010

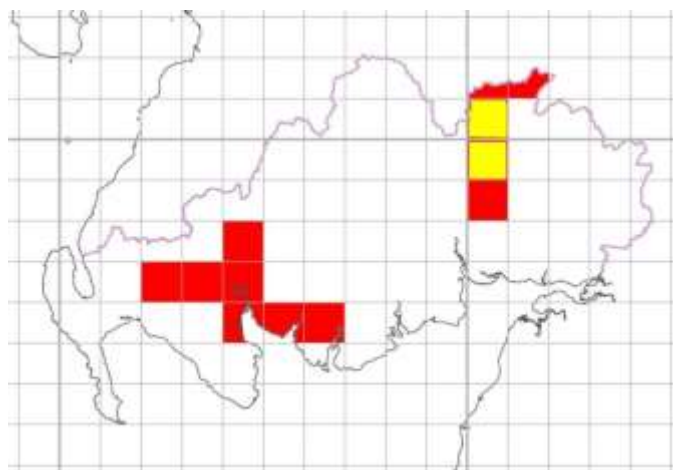


Figure 105 Fallow Deer Records 2015

Sika Deer *Cervus nippon*

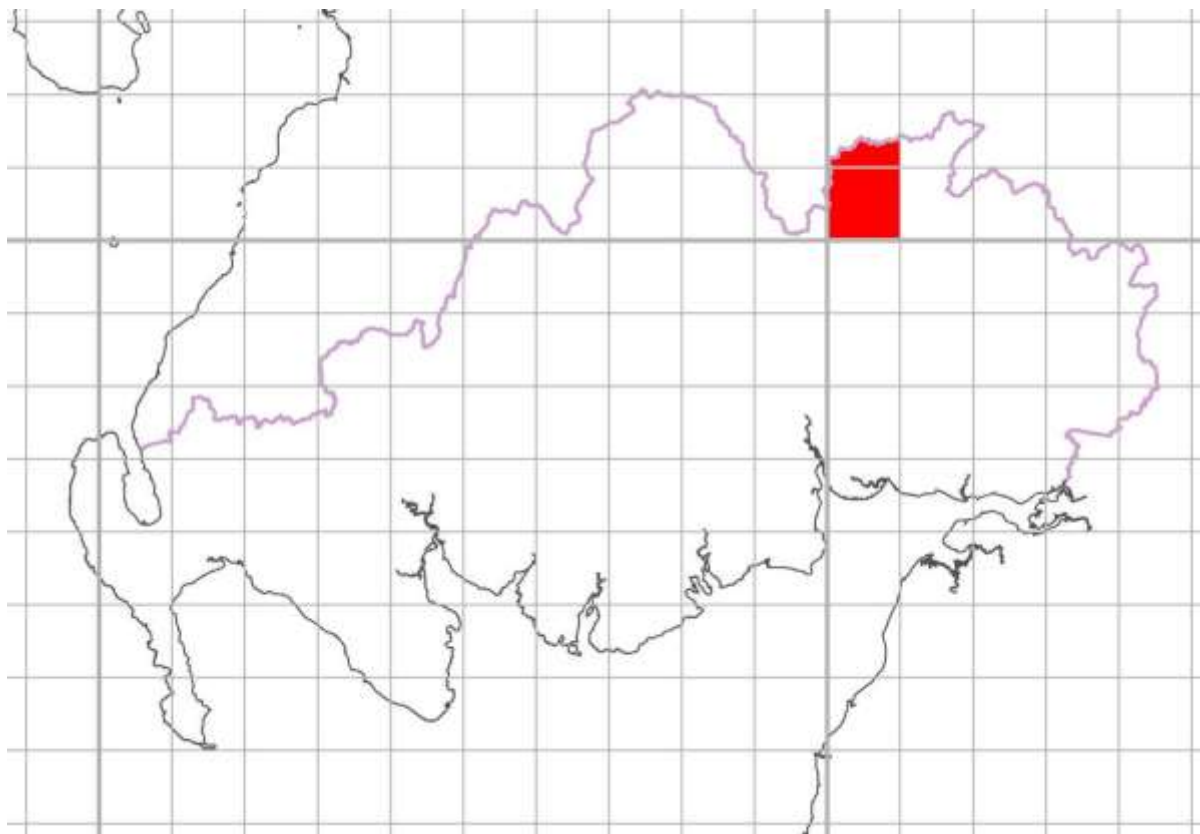


Figure 106 Sika Deer 2016

Status: Rare/Localised/Increasing

Not previously formally reported. But have been present since at least 2013.

Wild Boar *Sus scrofa*

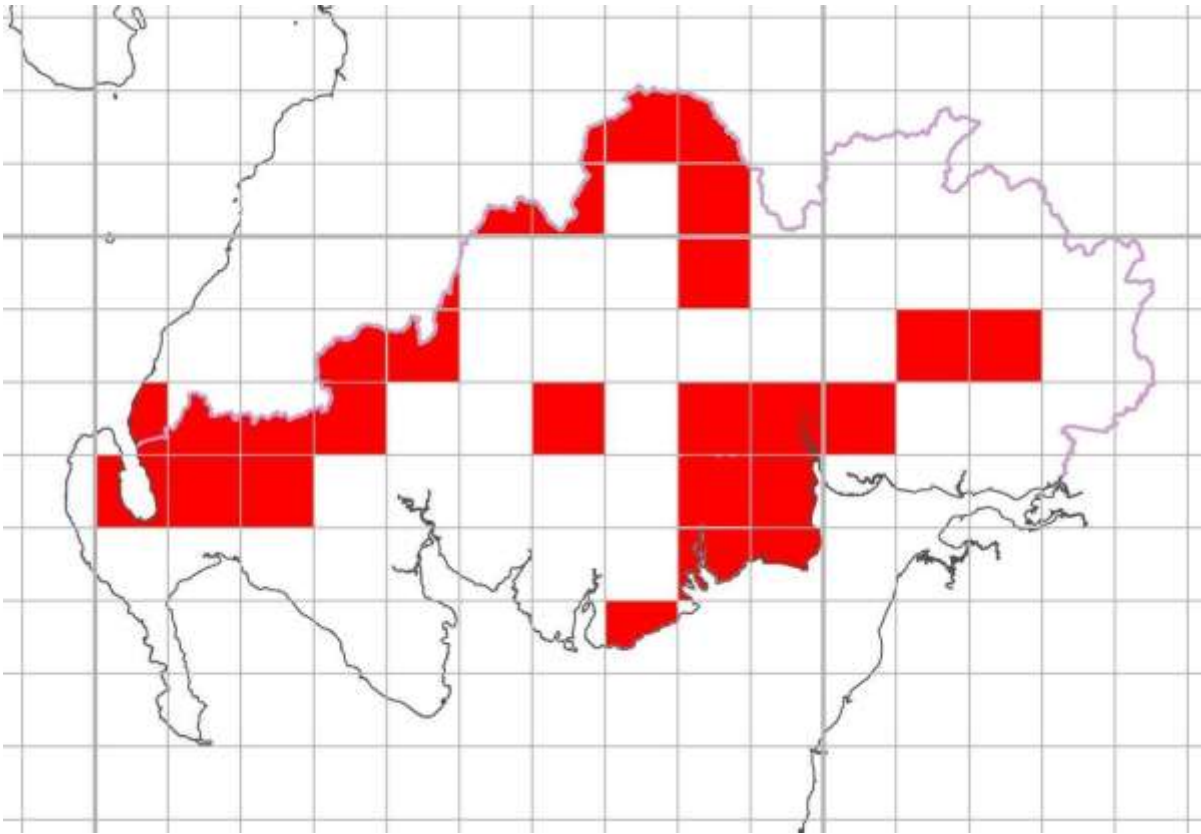


Figure 107 Wild Boar Records 2016

Status: Uncommon/ Fairly Widespread/Unknown

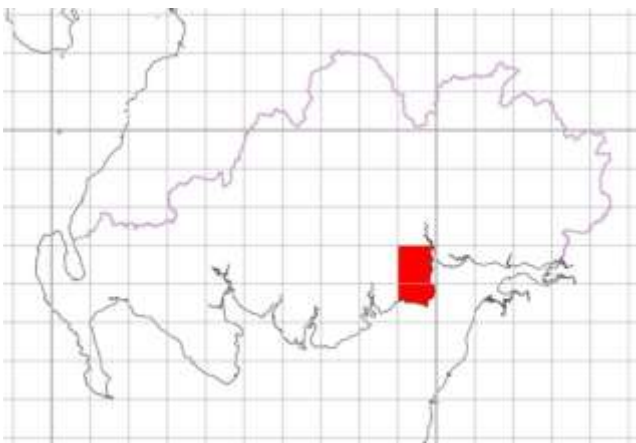


Figure 108 Wild Boar Records 2010

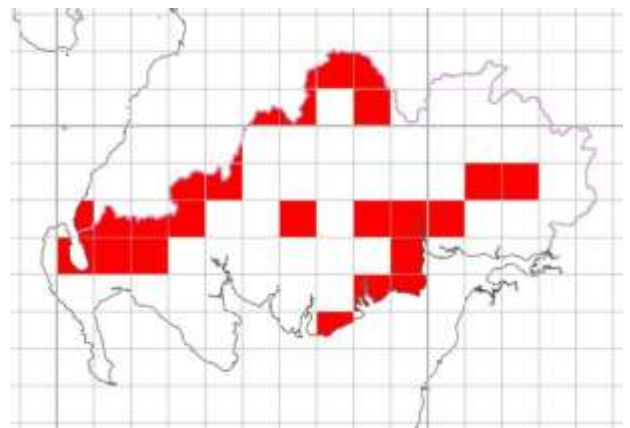


Figure 109 Wild Boar Records 2015

Feral Goat *Capra hircus*

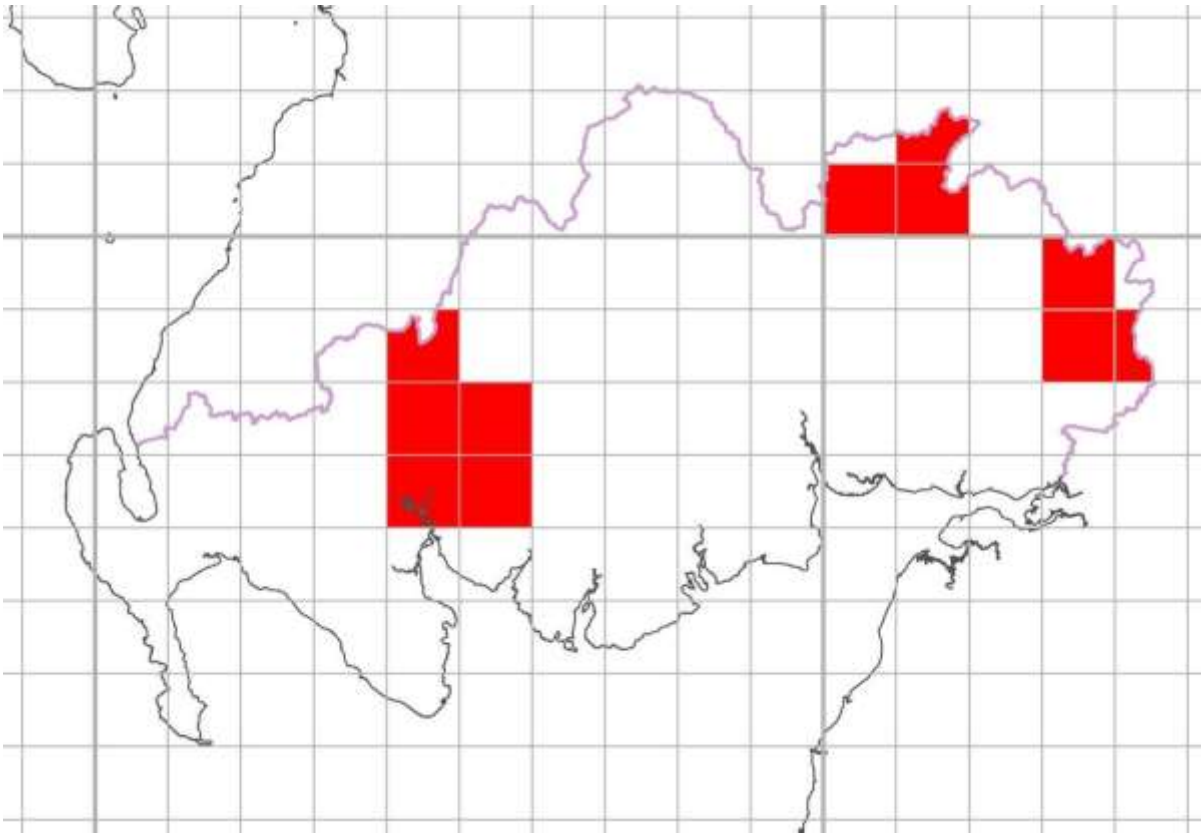


Figure 110 Feral Goat Records 2016

Status: Fairly Common/Very Localised/Possible Decline

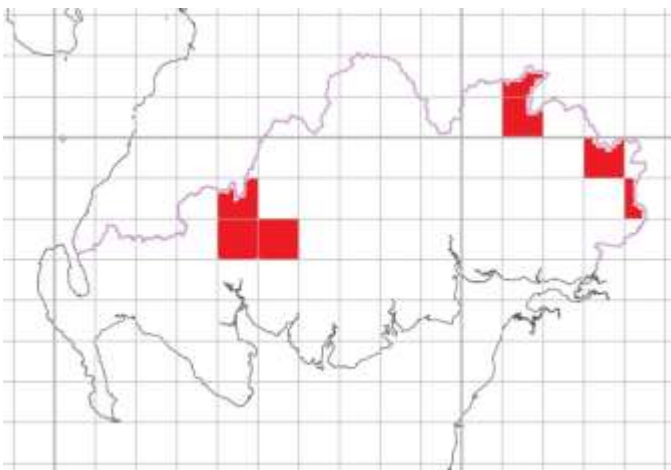


Figure 111 Feral Goat Records 2010

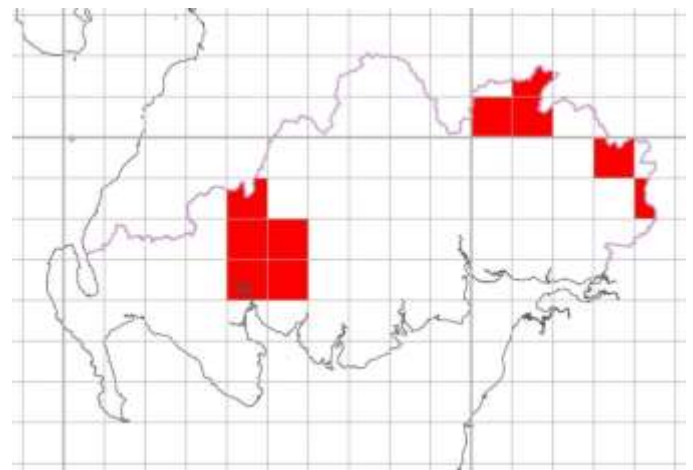


Figure 112 Feral Goat Records 2015

Common (or Harbour) Seal *Phoca vitulina*

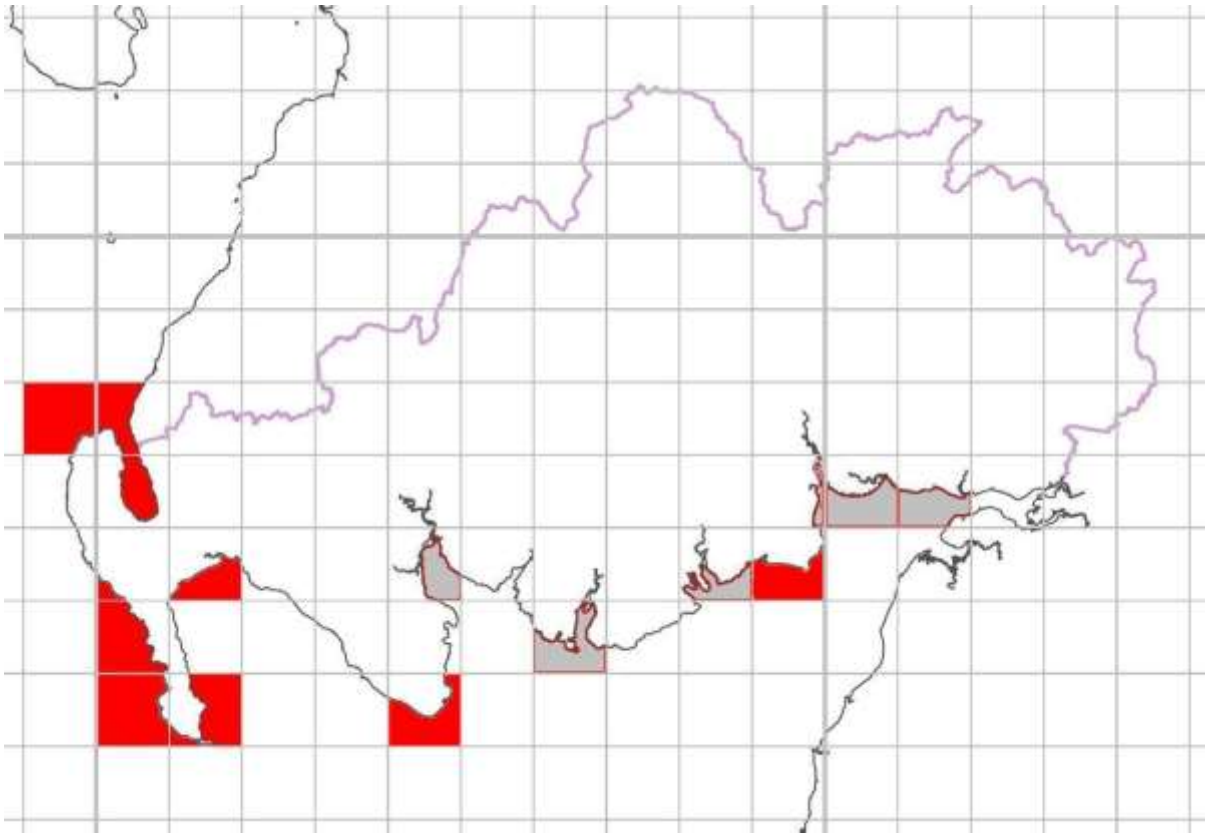


Figure 113 Common Seal Records 2016

Status: Uncommon/Widespread/Unknown

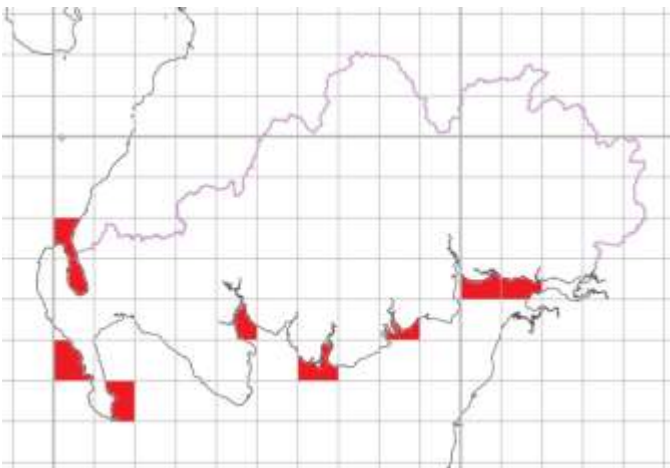


Figure 114 Common Seal Records 2010

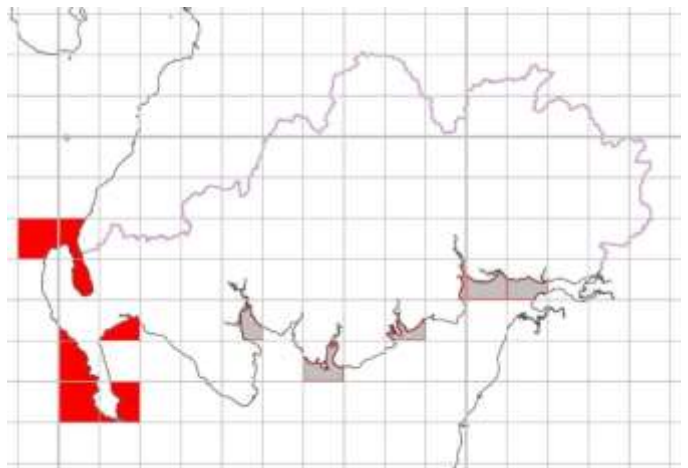


Figure 115 Common Seal Records 2015

Grey Seal *Halichoerus grypus*

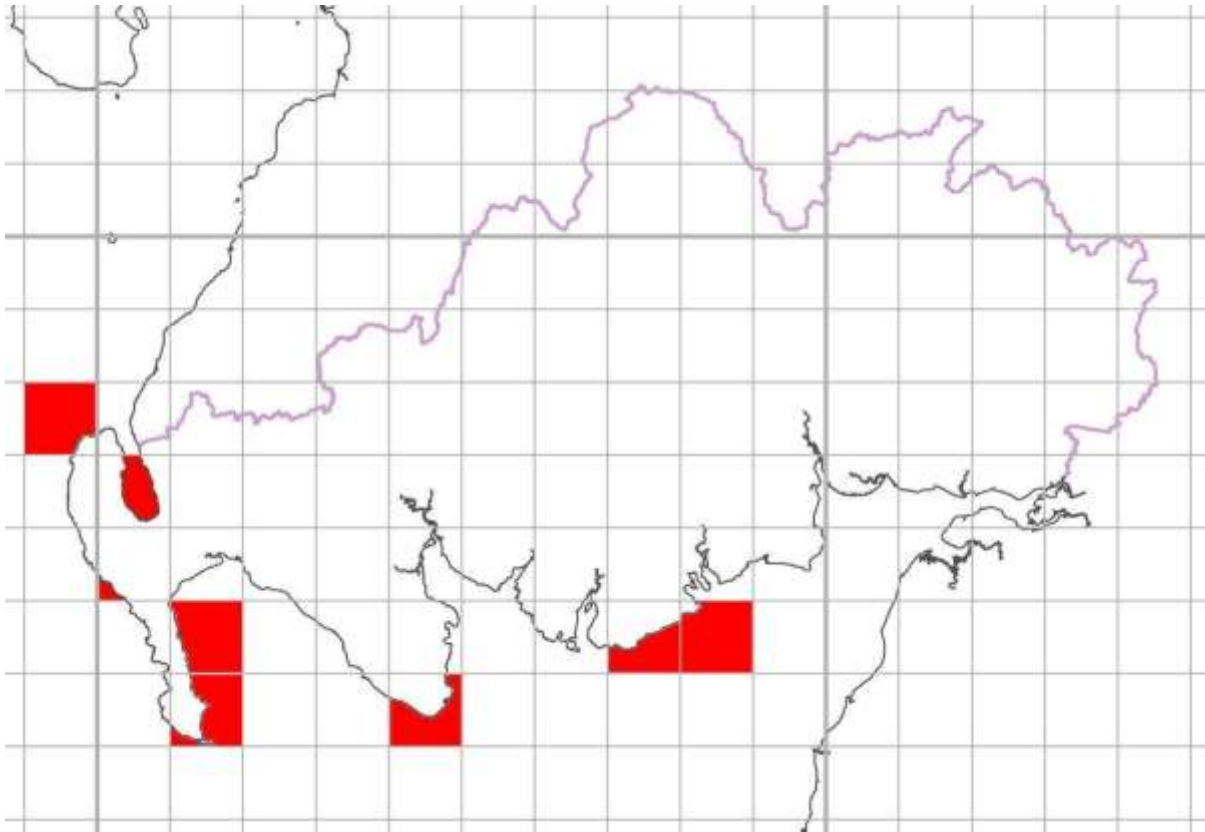


Figure 116 Grey Seal Records 2016

Status: Uncommon/Localised/Unknown

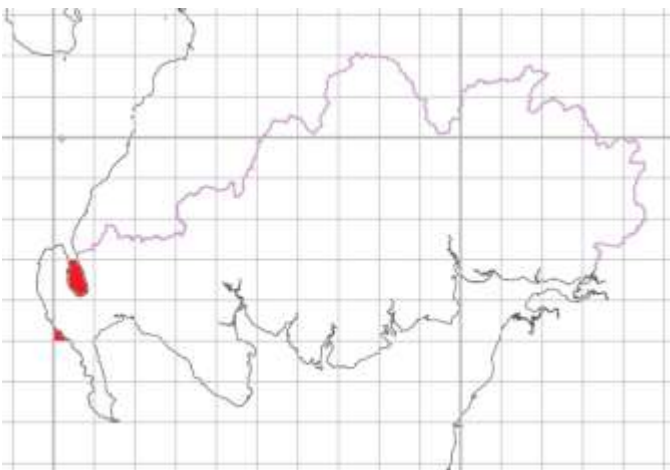


Figure 117 Grey Seal Records 2010

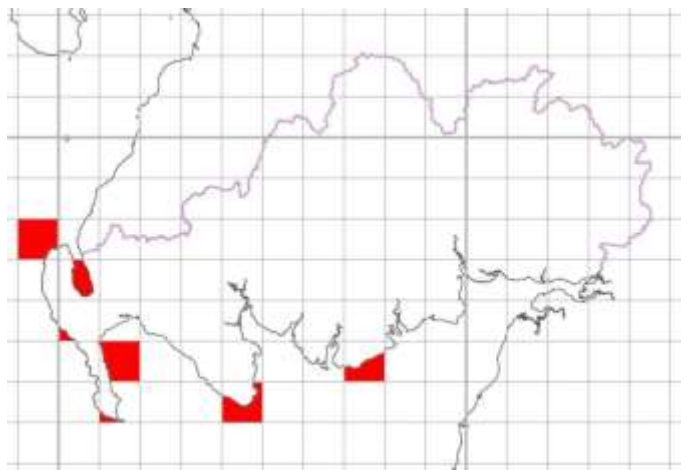


Figure 118 Grey Seal Records 2015

Atlantic White-sided Dolphin *Lagenorhynchus acutus*

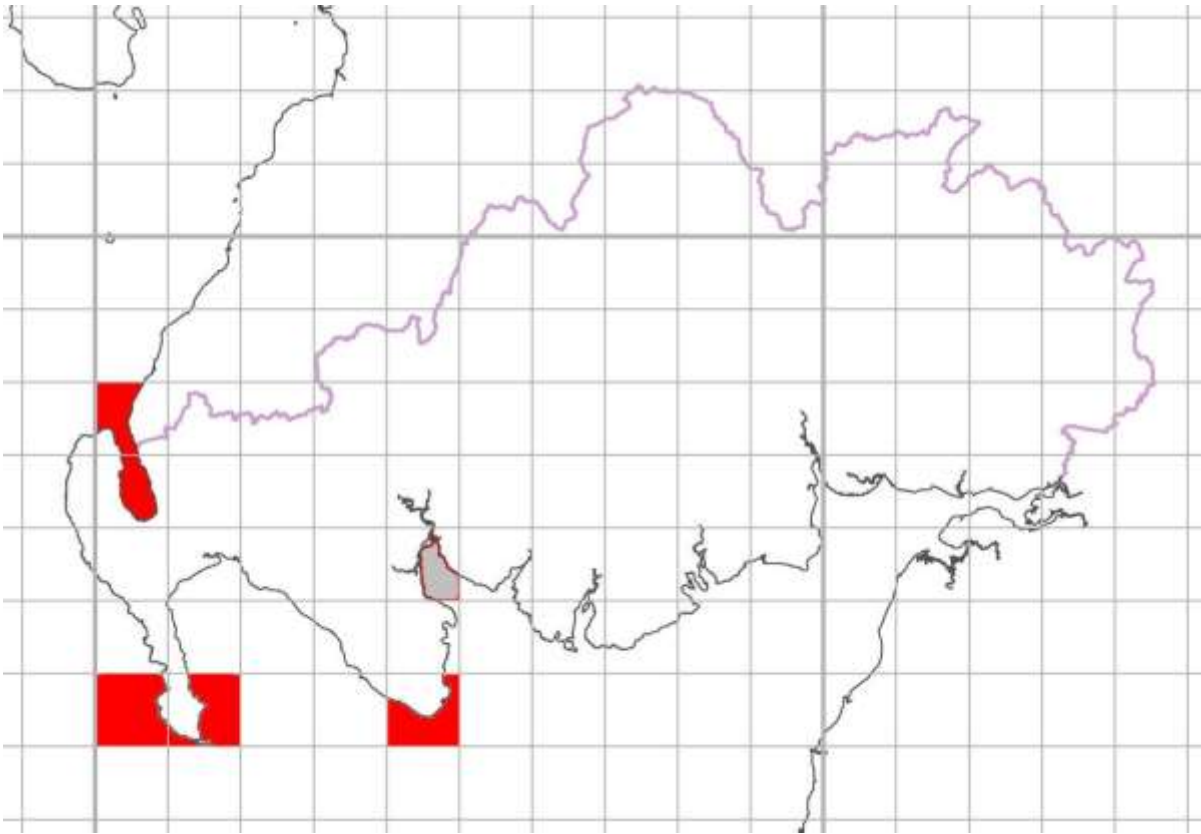


Figure 119 Atlantic White-sided Dolphin Records 2016

Status: Scarce/Localised/Unknown

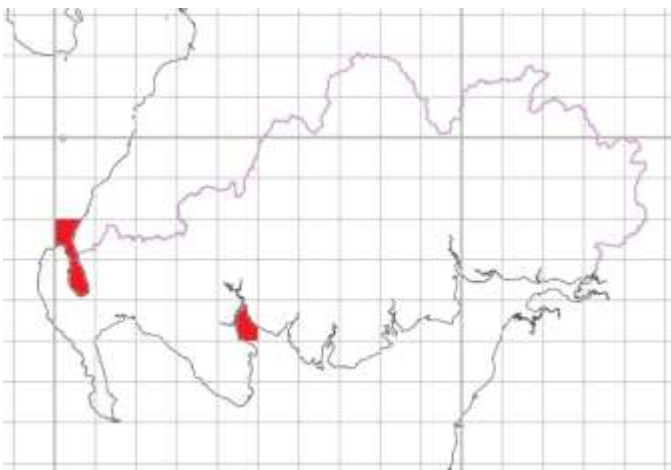


Figure 120 Atlantic White-sided Dolphin Records 2010

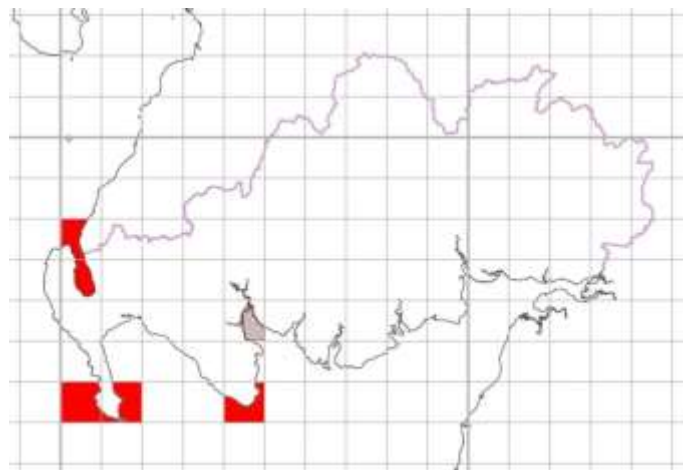


Figure 121 Atlantic White-sided Dolphin Records 2015

Common Dolphin *Delphinus delphis*

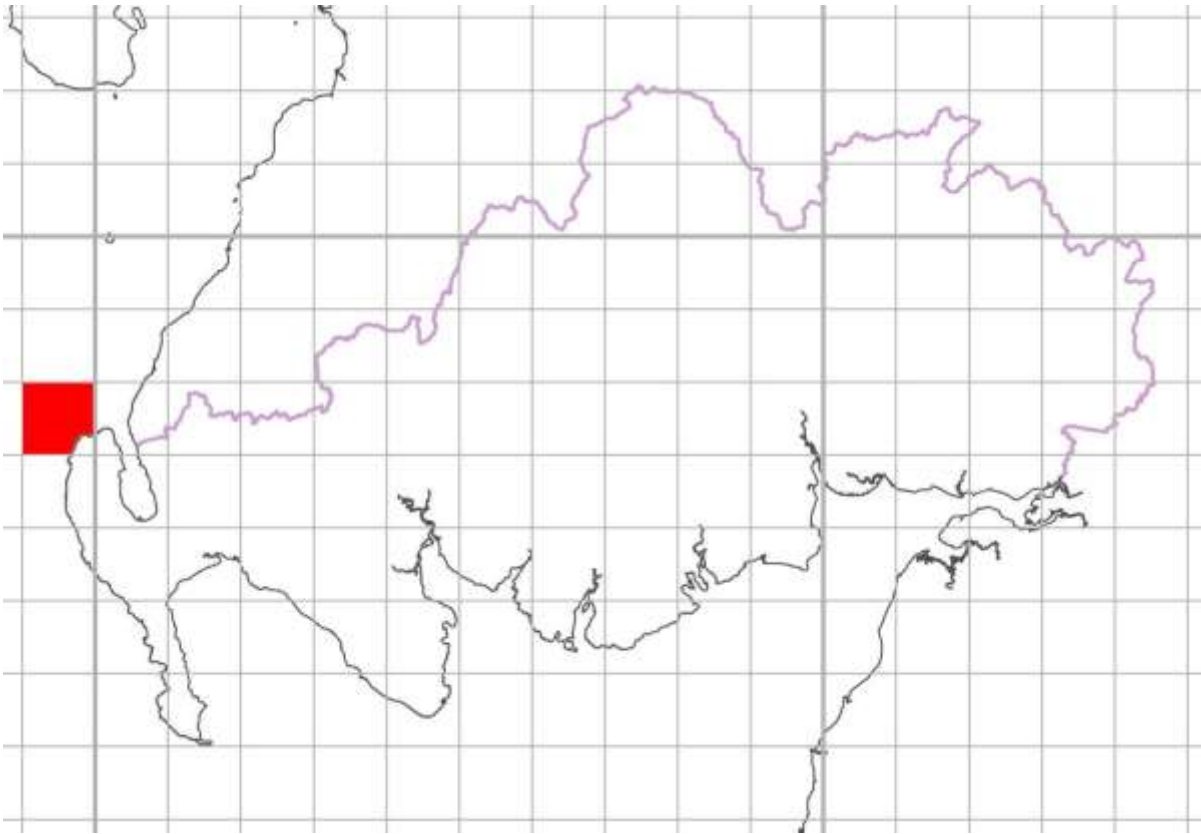


Figure 122 Common Dolphin Records 2016

Status: Scarce/Very Localised/Unknown

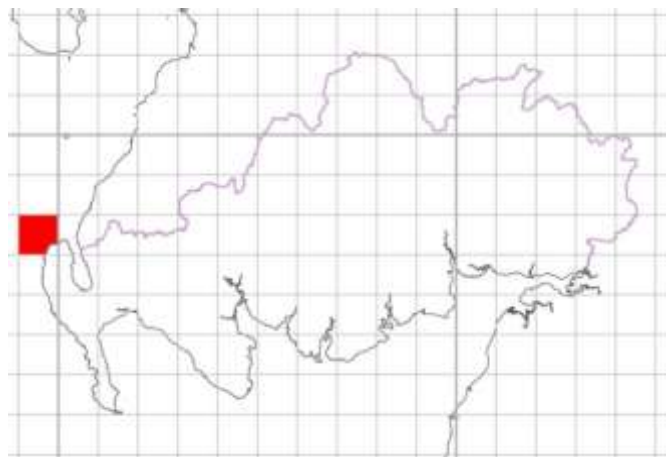


Figure 123 Common Dolphin Records 2015

Bottle-nosed Dolphin *Tursiops truncatus*

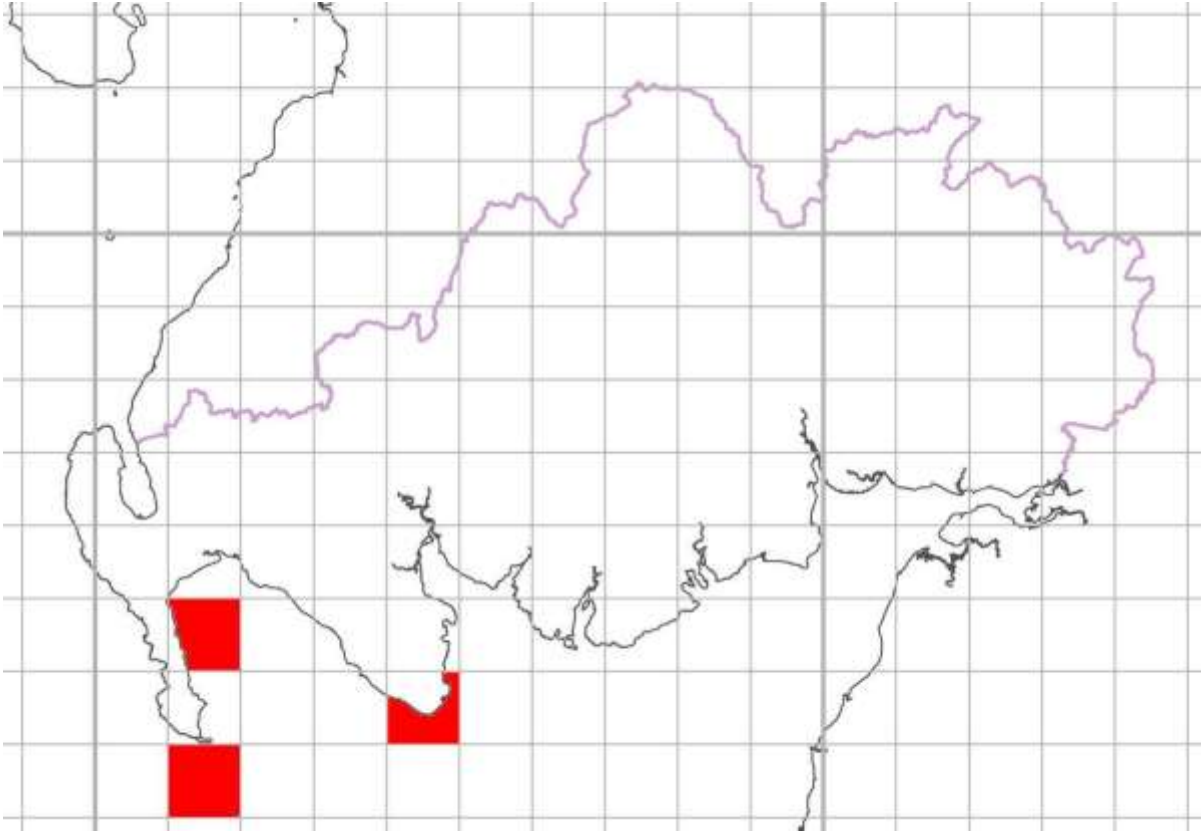


Figure 1324 Bottle-nosed Dolphin

Status: Scarce/Very Localised/Unknown

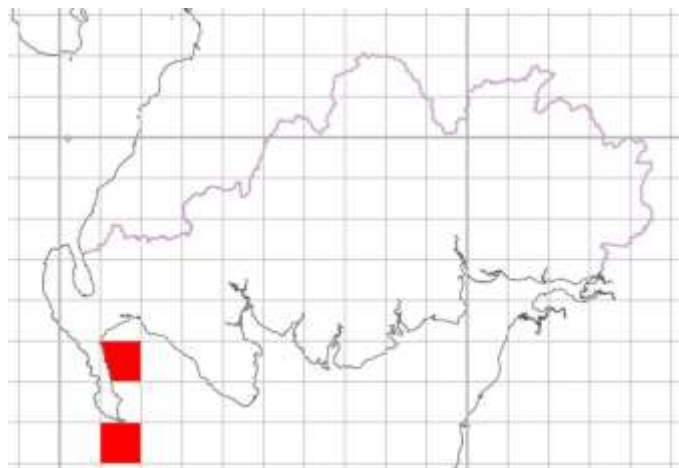


Figure 125 Bottle-nosed Dolphin Records 2015

Common or Harbour Porpoise *Phocoena phocoena*

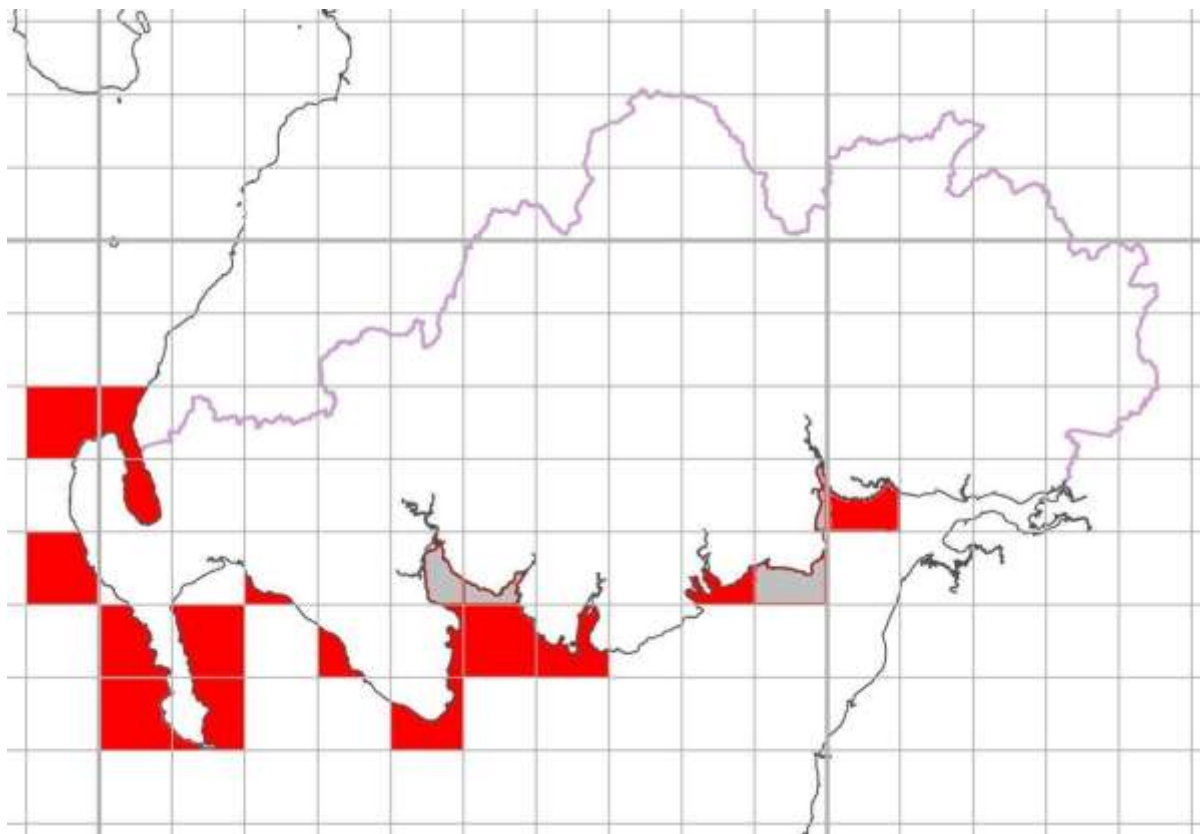


Figure 126 Common Porpoise Records 2016

Status: Scarce/Widespread/Unknown

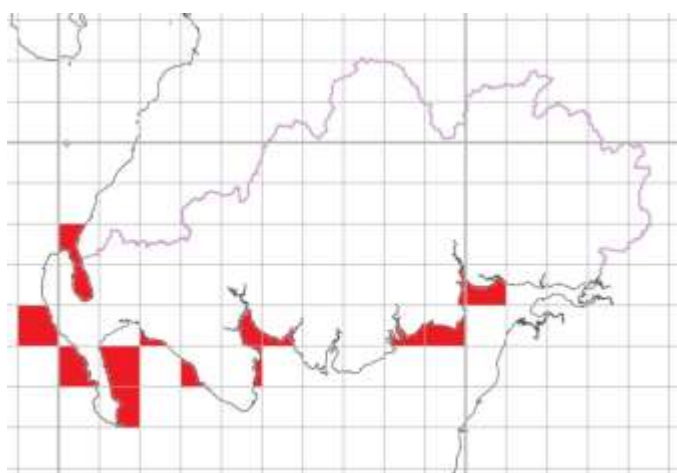


Figure 127 Common Porpoise Records 2010

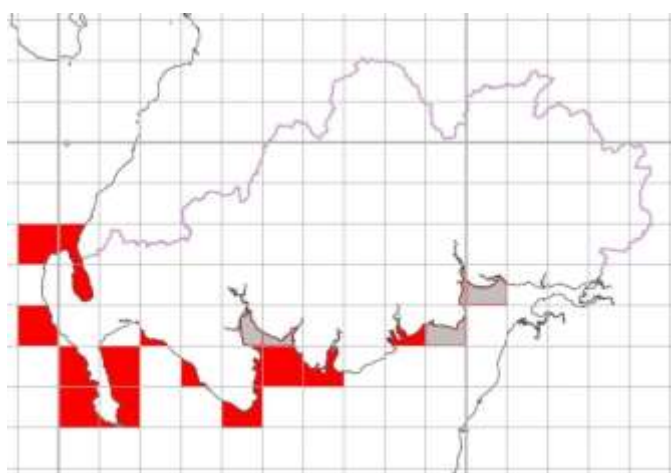


Figure 128 Common Porpoise Records 2015

Minke Whale *Balaenoptera auctorostrata*

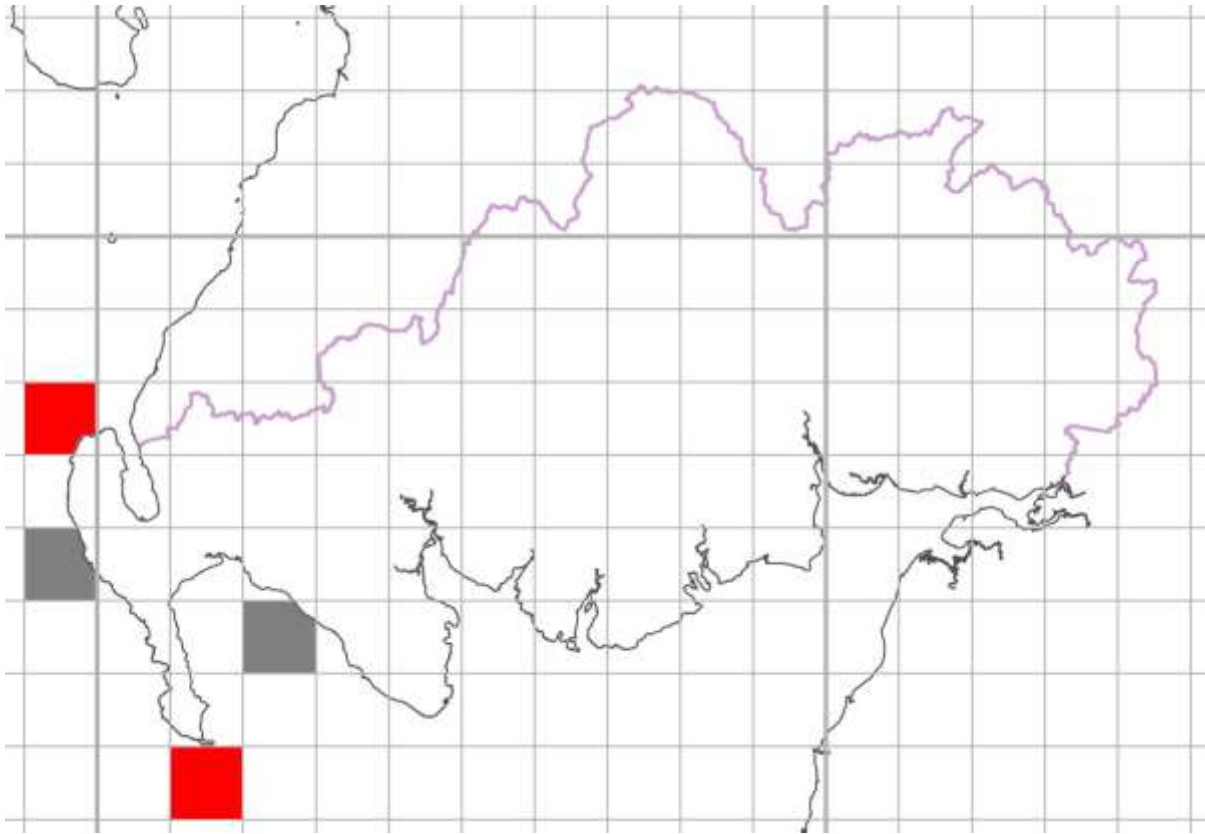


Figure 129 Minke Whale Records 2016

Status: Scarce/Very Localised/Unknown

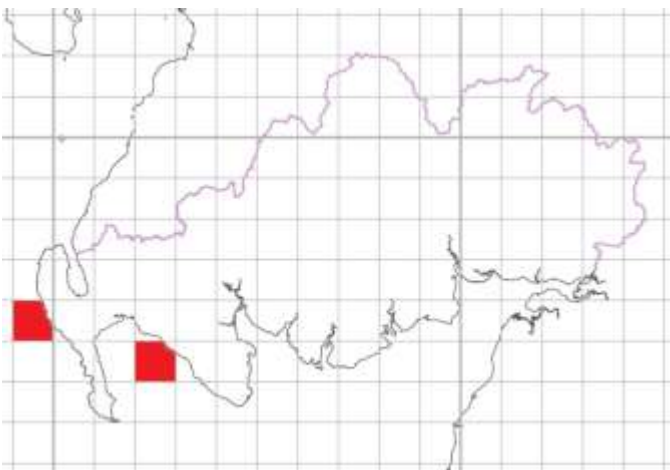


Figure 130 Minke Whale Records 2010

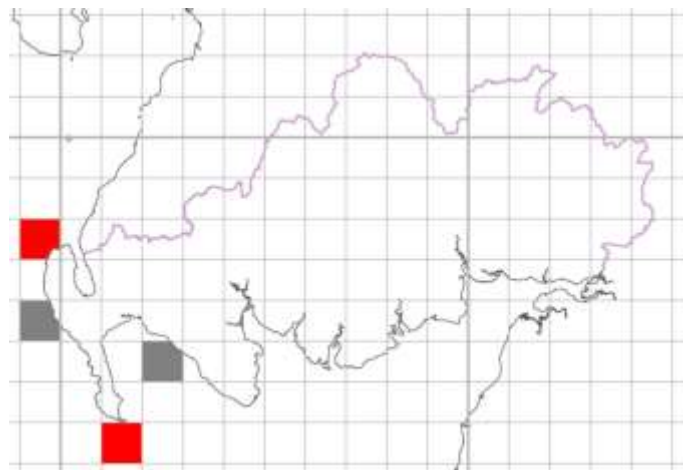


Figure 131 Minke Whale Records 2015

Humpback Whale *Megaptera novaeangliae*

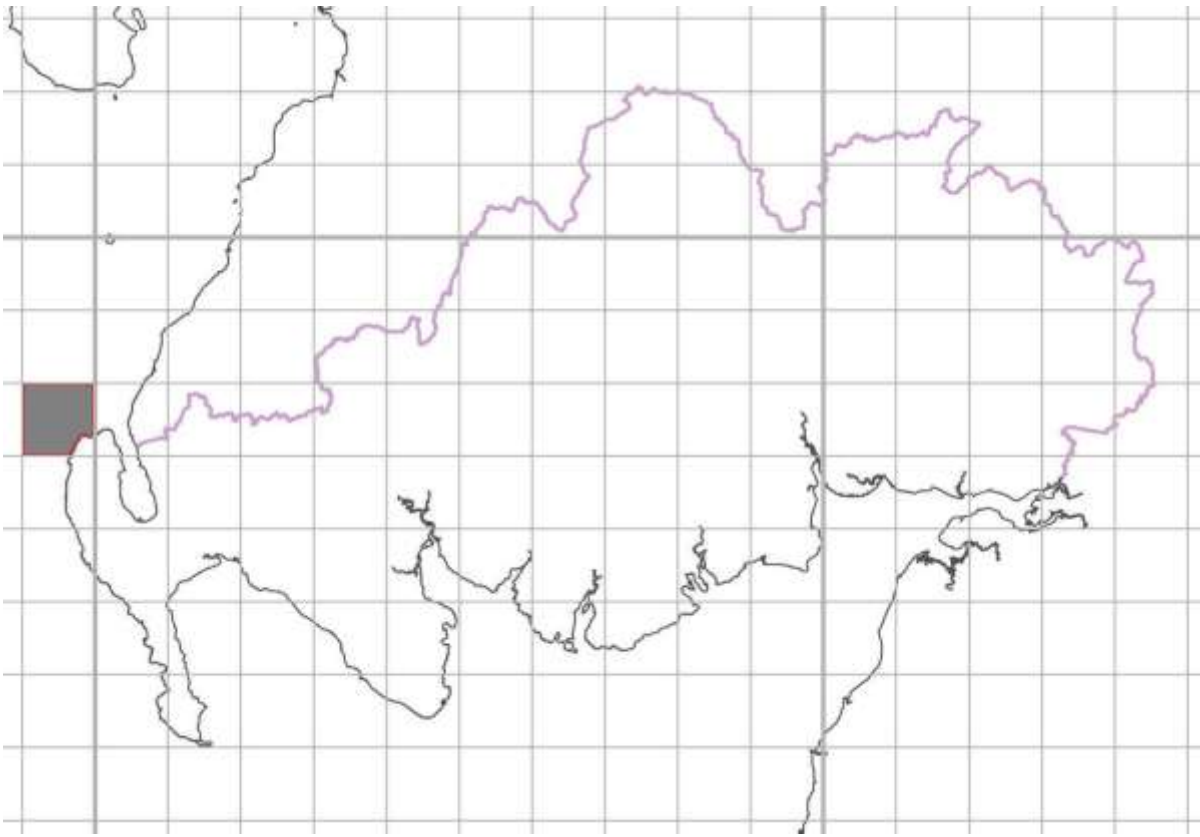


Figure 1432 Humpback Whale

Status: Scarce/Very Localised/Unknown

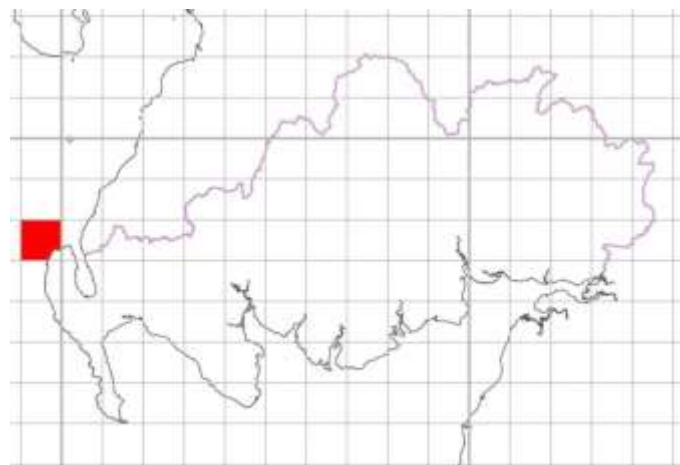


Figure 133 Humpback Whale Records 2015

