



Bat Survey results for NT0806 from 3 survey nights

Below you can find a summary of the main findings from your bat survey visits. Further information for individual visits can be found on the following pages.

The total number of recordings per night:



Bat species detected:

Our provisional analysis of the recordings detected the following species. The numbers relate to the number of bat passes rather than the number of individual bats.

Species	Total number of passes (all nights)
Common pipistrelle	23
Natterer's bat	7
Noctule	2
Soprano pipistrelle	33

Below are details of recordings that could not be assigned with confidence to a single species.

Species	Total number of passes (all nights)
Myotis species	3
Pipistrelle species	3

Note: Pipistrelle species = this refers to a recording of a bat in the genus *Pipistrellus* that cannot be identified to species. In the UK, possible species include Common Pipistrelle, Soprano Pipistrelle and Nathusius' Pipistrelle. Myotis species = this refers to a recording of a bat in the genus *Myotis* that cannot be identified with confidence to species. In the UK this includes Natterer's, Daubenton's, Whiskered, Brandt's, Alcaethoe bat and Bechstein's bat.

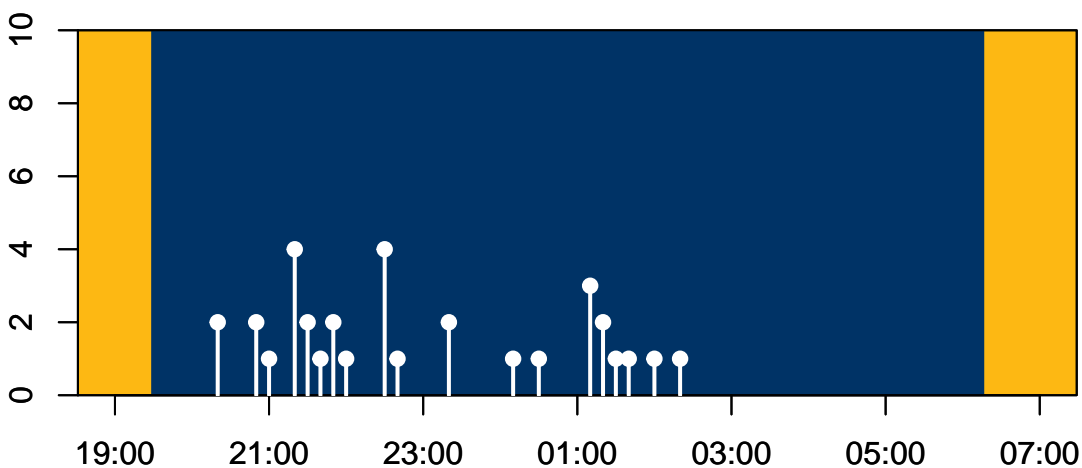
Visit information

Below and on the following pages you can see a summary of the bats detected on each recording night. This includes a graph for each night showing how the number of bat passes (all species) varied through the night. Dawn and dusk are indicated by the division between sun-yellow and midnight-blue areas.

Recording night: 07 Sep

Species	Total number of passes
Common pipistrelle	8
Myotis species	2
Natterer's bat	5
Noctule	2
Pipistrelle species	1
Soprano pipistrelle	15

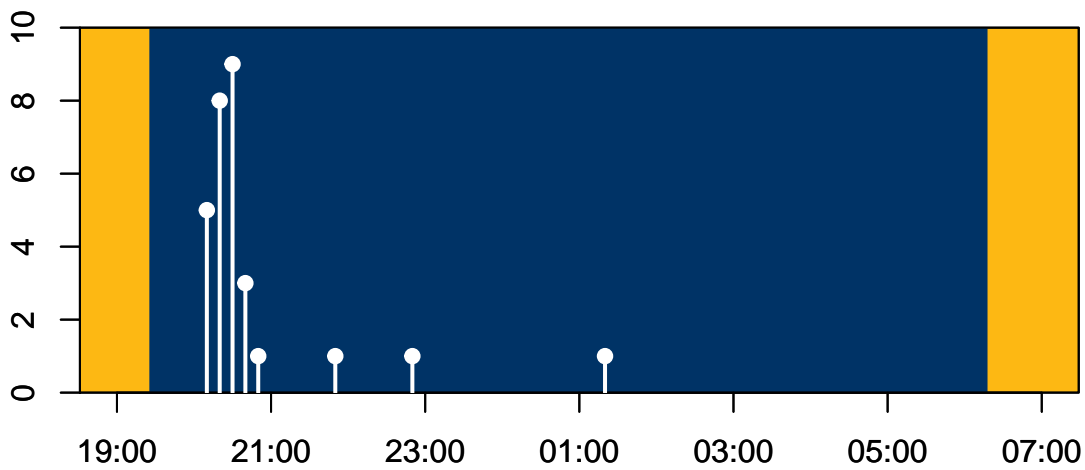
Number of bat passes per 10 minutes through the night:



Recording night: 08 Sep

Species	Total number of passes
Common pipistrelle	13
Natterer's bat	2
Pipistrelle species	1
Soprano pipistrelle	13

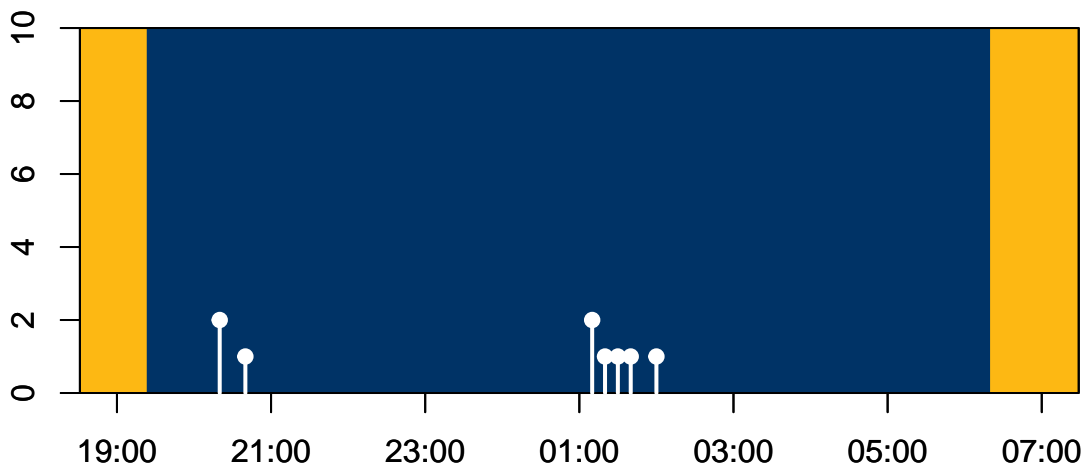
Number of bat passes per 10 minutes through the night:



Recording night: 09 Sep

Species	Total number of passes
Common pipistrelle	2
Myotis species	1
Pipistrelle species	1
Soprano pipistrelle	5

Number of bat passes per 10 minutes through the night:

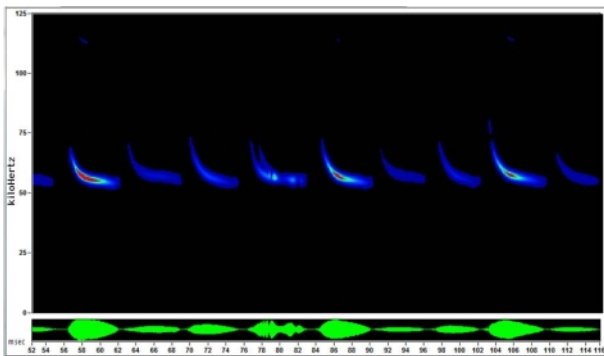


Species Information sheet: Soprano pipistrelle



The two commonest pipistrelle species found in the UK, the Common and Soprano pipistrelles, were only identified as separate species in the 1990s. The two species look very similar and often the easiest way to tell them apart is from the frequency of their echolocation calls. (Photo by Paul Wetton)

Sonogram

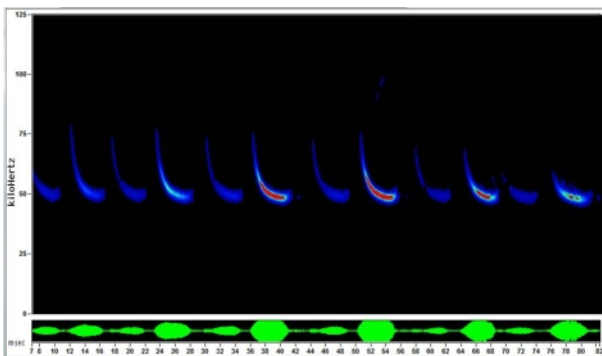


Species Information sheet: Common pipistrelle



The commonest of all British bat species. There are two very similar species, Common and Soprano pipistrelle. They are the bats that you are most likely to see. They appear fast and jerky in flight as they dodge about pursuing small insects which the bats catch and eat on the wing. (Photo by Amy Lewis)

Sonogram

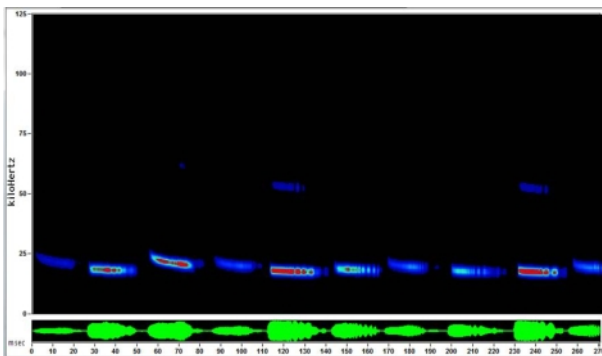


Species Information sheet: Noctule



The Noctule is one of the largest British species and is usually the first bat to appear in the evening, sometimes even before sunset. They fly in the open, often well above tree-top level, with repeated steep dives when chasing insects. This species can fly at 50kph. (Photo by Jan Svetlik)

Sonogram



Species Information sheet: Natterer's bat



Natterer's bats have a slow to medium-paced flight, sometimes over water, but more often amongst trees, where their broad wings and tail membrane give them great manoeuvrability at slow speed. They normally fly at heights of less than 5m, but occasionally may reach 15m in the tree canopy. Much of the prey is taken from foliage and includes many flightless or day-flying insects. (photo by Jan Svetlik)

Sonogram

